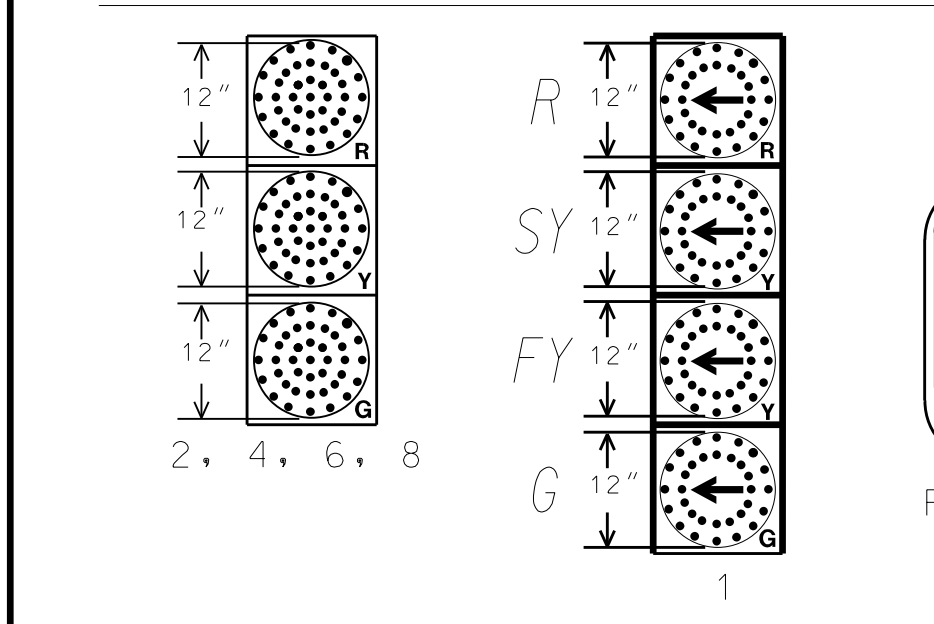


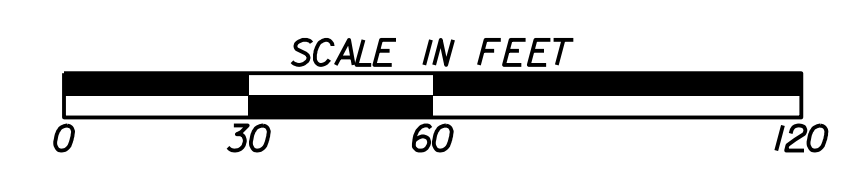
INSTALL: 6" x 6" PULSE LOOP DETECTORS (TYP) (FRONT OF LOOP SHALL BE 110' FROM BACK OF STOP BAR (TYP))

INSTALL: STRAIN POLE, TP IV CONDUIT, NONMETAL TP 2, 2", 10 LF, 3 EA TP 2, 1", 10 LF, 2 EA

INSTALL: PEDESTRIAN POLE WITH LED PEDESTRIAN COUNTDOWN SIGNAL HEADS P6 & P8 PUSH BUTTON, PEDESTRIAN SIGNS R10-3E(L) & R10-3E(R)



**GEORGIA**  
DEPARTMENT  
OF  
TRANSPORTATION



REVISION DATES


STATE OF GEORGIA  
DEPARTMENT OF TRANSPORTATION  
OFFICE:  
**CONSTRUCTION PLAN**  
SR 20 @ SR 108/  
UPPER SWEETWATER TRAIL

DRAWING No. 27-001