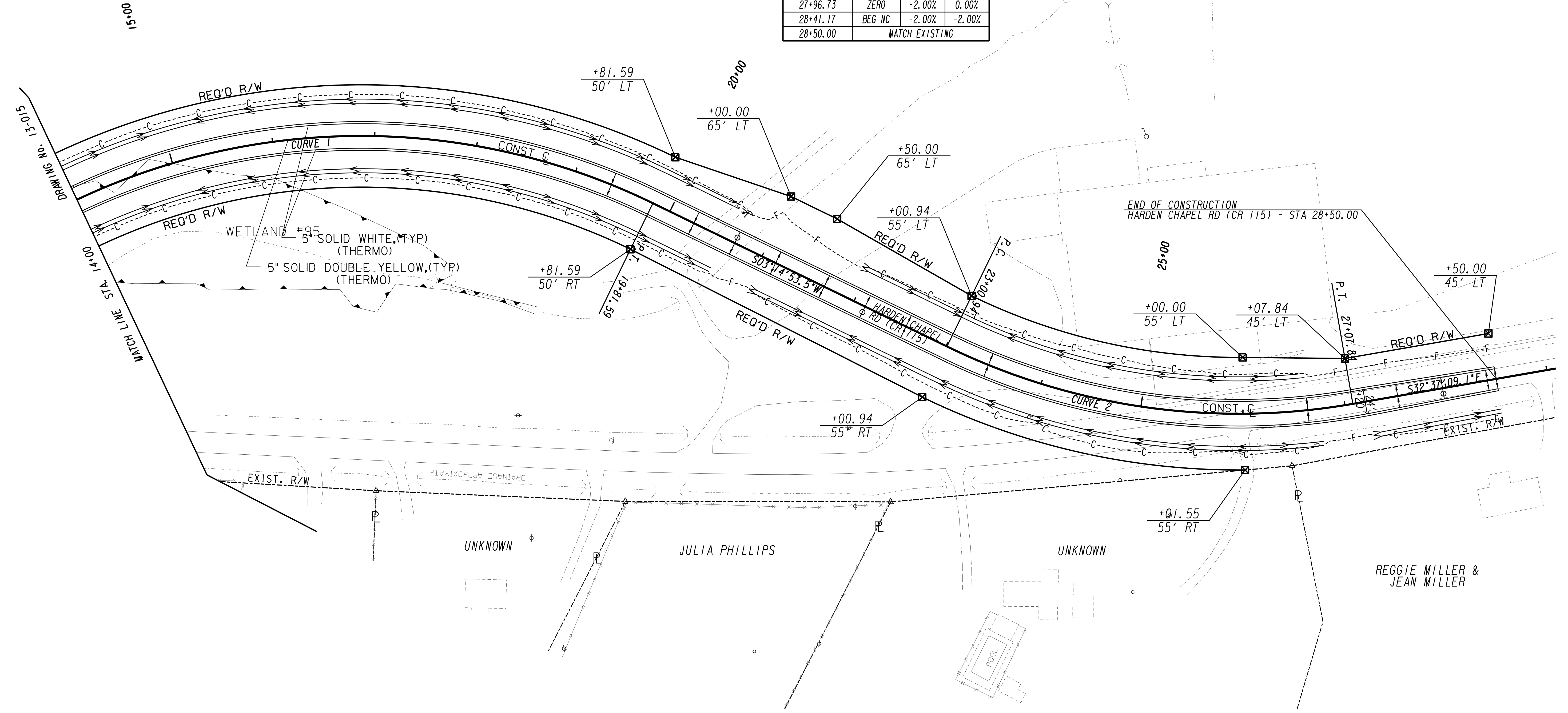
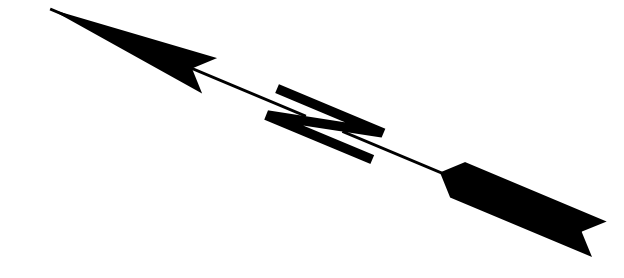


HARDEN CHAPEL RD
 Curve #2 (emax=6%)
 PI Sta= 25+11.31
 N= 778067.75
 E= 601059.62
 DELTA= 35°52'02.5" (LT)
 D= 08°48'53.05"
 T= 210.37
 L= 406.90
 R= 650.00
 E= 33.19
 SE RATE = 6.0 %

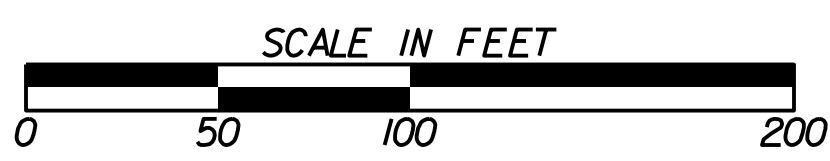
| SUPERELEVATION - HARDEN CHAPEL RD (CR 115) | | | |
|--|----------------|--------|--------|
| STA | TRANS | LT | RT |
| 19+37.15 | END FS | +6.00% | -6.00% |
| 20+26.03 | RC | +2.00% | -2.00% |
| 20+70.48 | ZERO | 0.00% | -2.00% |
| 21+14.92 | BEG NC | -2.00% | -2.00% |
| 21+67.61 | END NC | -2.00% | -2.00% |
| 22+12.05 | ZERO | -2.00% | 0.00% |
| 22+56.50 | RC | -2.00% | +2.00% |
| 23+45.38 | BEG FS | -6.00% | +6.00% |
| 26+63.40 | END FS | -6.00% | +6.00% |
| 27+52.28 | RC | -2.00% | +2.00% |
| 27+96.73 | ZERO | -2.00% | 0.00% |
| 28+41.17 | BEG NC | -2.00% | -2.00% |
| 28+50.00 | MATCH EXISTING | | |



PROPERTY AND EXISTING R/W LINE
 REQUIRED R/W LINE
 CONSTRUCTION LIMITS
 EASEMENT FOR CONSTR
 & MAINTENANCE OF SLOPES
 EASEMENT FOR CONSTR OF SLOPES
 EASEMENT FOR CONSTR OF DRIVES

---@--- BEGIN LIMIT OF ACCESS.....BLA
 ---C--- END LIMIT OF ACCESS.....ELA
 ---F--- LIMIT OF ACCESS
 ---REQ'D R/W & LIMIT OF ACCESS

GEORGIA
 DEPARTMENT
 OF
 TRANSPORTATION



| REVISION DATES | |
|----------------|--|
| | |
| | |
| | |
| | |
| | |
| | |

STATE OF GEORGIA
 DEPARTMENT OF TRANSPORTATION
 OFFICE: ROADWAY DESIGN
CROSSROAD PLAN
 EDS00-0545-0010251
 TOOMBS COUNTY
 DRAWING No. 14-006