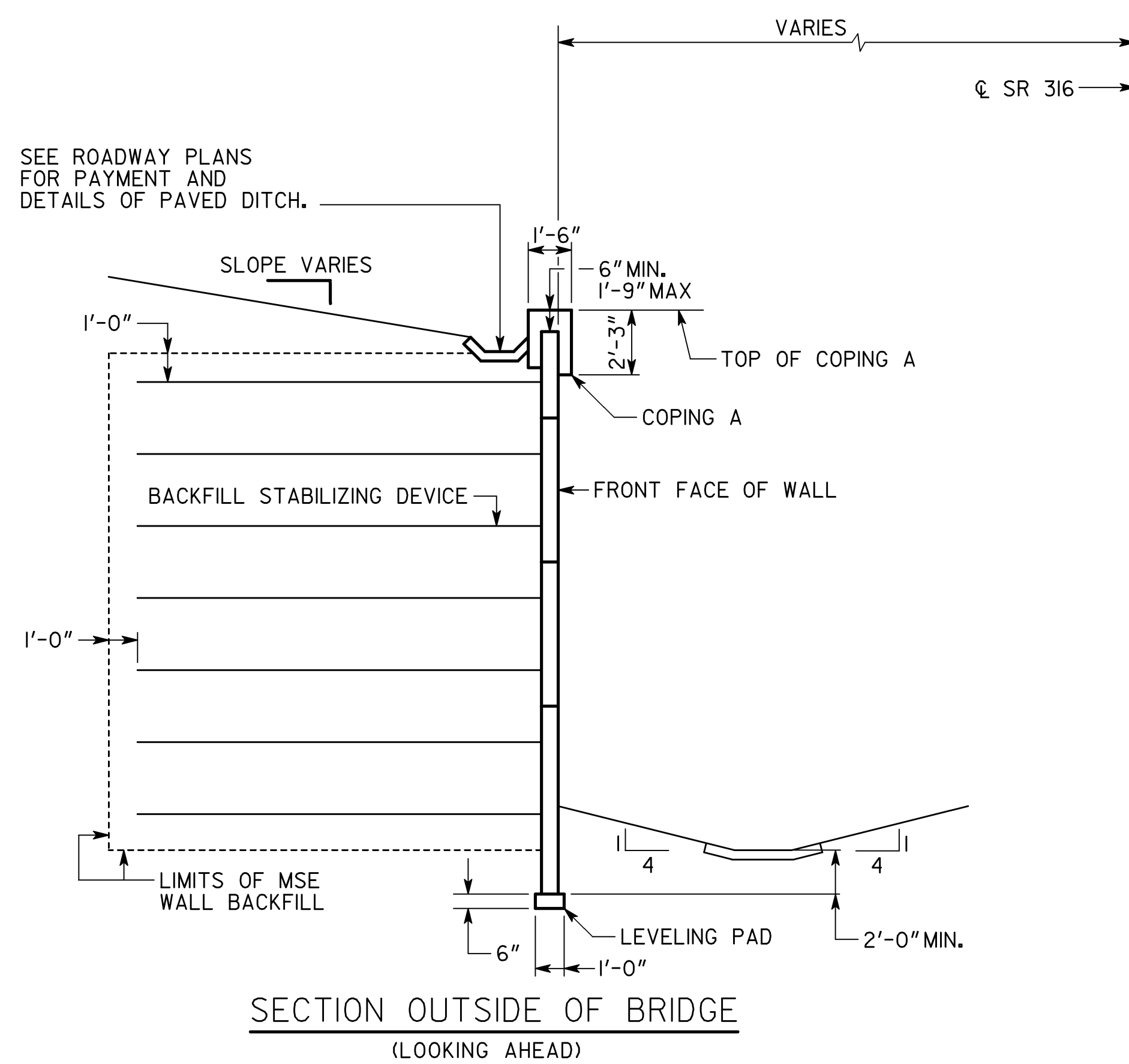
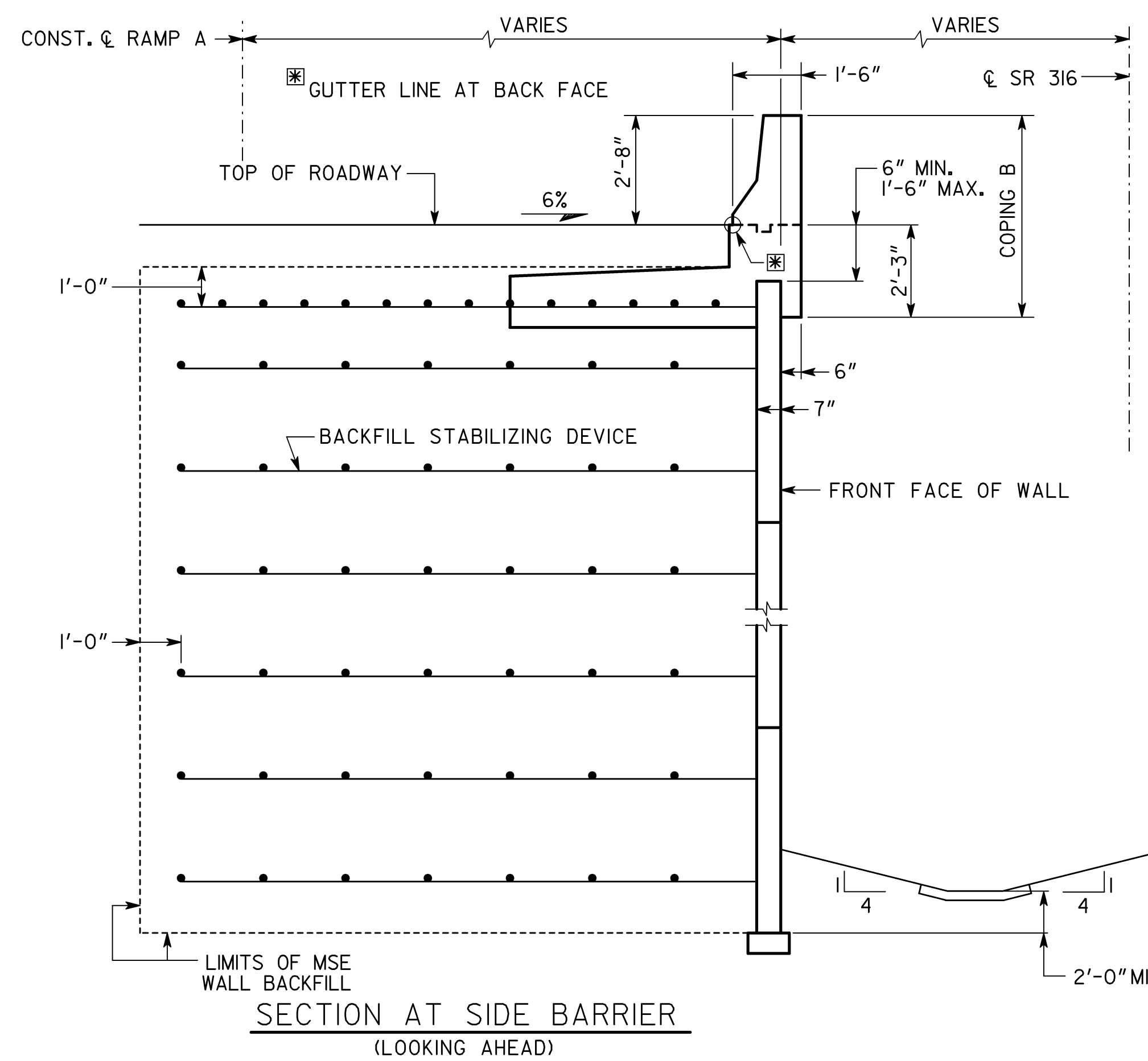
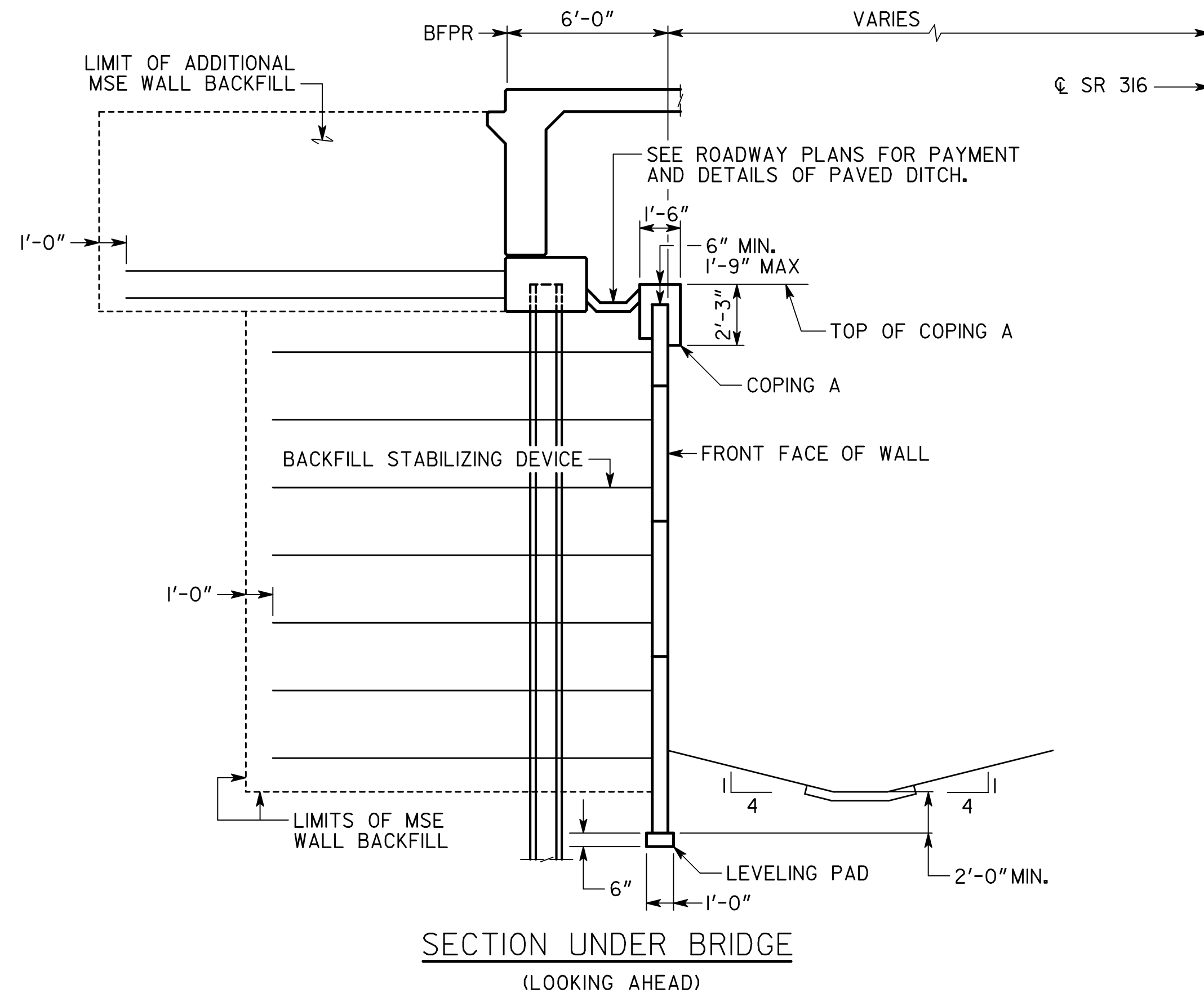


GENERAL NOTES

SPECIFICATIONS - GEORGIA STANDARD SPECIFICATIONS, 2013 EDITION, AS MODIFIED BY CONTRACT DOCUMENTS.
 REINFORCING STEEL - PLACE AND TIE ALL REINFORCING STEEL IN ACCORDANCE WITH THE GEORGIA DOT SPECIFICATIONS. DO NOT WELD REINFORCING STEEL.
 FINISH - NO ARCHITECTURAL FINISH IS REQUIRED, UNLESS OTHERWISE STATED IN THE CONTRACT DOCUMENTS.
 FINISH - PROVIDE PLAIN CONCRETE FINISH.
 GRAFFITI PROOF COATING - ALL MSE WALL PANELS SHALL HAVE A GRAFFITI PROOF COATING AS PER SECTION 838 OF THE GEORGIA DOT SPECIFICATIONS.
 CONCRETE COVER - MAINTAIN 2 INCHES COVER MINIMUM ON ALL REINFORCING STEEL.
 STATIONS AND OFFSETS - STATIONS SHOWN ARE ALONG ϕ SR 316. OFFSETS SHOWN ARE MEASURED TO THE FRONT FACE OF WALL.
 STAGE CONSTRUCTION - THE WALL MAY BE CONSTRUCTED IN STAGES TO IMPROVE THE UNDERLYING SOIL BEARING CAPACITY. CONSTRUCT WALL TO A HEIGHT RESULTING IN A SOIL BEARING PRESSURE OF XXXX POUNDS PER SQUARE FOOT, WAIT 30 DAYS, THEN CONSTRUCT ADDITIONAL STAGES OR REMAINDER OF WALL.
 TEMPORARY SHORING - PROVIDE TEMPORARY SHORING AS NECESSARY FOR WALL CONSTRUCTION.
 JOINTS - PROVIDE ONE INCH EXPANSION JOINT IN COPING OR BARRIER AT EVERY FOURTH PANEL.
 WELDING - ALL WELDING ON GEORGIA DOT PROJECTS SHALL BE PERFORMED BY CERTIFIED WELDERS THAT HAVE IN THEIR POSSESSION A CURRENT WELDING CERTIFICATION CARD ISSUED BY THE OFFICE OF MATERIALS AND RESEARCH. USE ONLY E70XX (EXCLUDING E7014 AND E7024) LOW HYDROGEN ELECTRODES FOR MANUAL SHIELDED METAL ARC WELDING.
 WALL PLANS - THE RETAINING WALL IS CONSIDERED A CONTRACTOR DESIGN. THESE WALL PLANS ARE CONCEPTUAL AND ARE FOR ILLUSTRATIVE PURPOSES ONLY. EXACT NUMBER OF SOIL REINFORCING STRIPS, THEIR LOCATIONS AND LENGTHS SHALL BE PROVIDED BY THE CONTRACTOR FOR THE WALL SYSTEM BID. THE PRESENCE OF THESE CONCEPTUAL PLANS IN THE CONTRACT DOCUMENTS IN NO WAY RELIEVES THE CONTRACTOR FROM PROVIDING A WALL SYSTEM WHICH PROVIDES STRUCTURAL ADEQUACY, IN ACCORDANCE WITH SECTION 627 OF THE GEORGIA DOT SPECIFICATIONS, AT THE BID PRICE.
 INCIDENTAL ITEMS - INCLUDE THE COST INCIDENTAL TO THE WORK THAT IS NOT SPECIFICALLY COVERED BY THE GEORGIA STANDARD SPECIFICATIONS, SUPPLEMENTAL SPECIFICATIONS AND/OR SPECIAL PROVISIONS IN THE OVERALL BID SUBMITTED. THIS INCLUDES THE COST OF JOINT FILLERS, NEOPRENE PADS, WATERPROOFING AND OTHER INCIDENTAL ITEMS NECESSARY TO COMPLETE THE WORK.

GENERAL NOTES (CONT.)

WALL DESIGN CALCULATIONS - CONTRACTOR TO PROVIDE WALL DESIGN CALCULATIONS. CALCULATIONS FOR EACH WALL SECTION SHALL INCLUDE THE VERIFICATION OF INTERNAL STABILITY AND EXTERNAL STABILITY, AS WELL AS A DETERMINATION OF THE BEARING CAPACITY AND ESTIMATED SETTLEMENT FOR THE APPROPRIATE LRFD LIMIT STATES.



DATE		WALL NO. 2	
REVISIONS		GEORGIA DEPARTMENT OF TRANSPORTATION ENGINEERING DIVISION-OFFICE OF BRIDGES AND STRUCTURES	
BY		MISCELLANEOUS DETAILS WALL NO. 2 SR 81 OVER SR 316 BARROW COUNTY CSNHS-0008-00(429)	
DRAWING NO. 31-006		NO SCALE	
WALL SHEET 6 OF 8		OCTOBER 2014	
DESIGNED TKH	CHECKED DPD	REVIEWED DLC/WMD	
DRAWN TKH	DESIGN GROUP DPD	APPROVED BFR	

1/4" = 1" WHEN PRINTED FULL SIZE