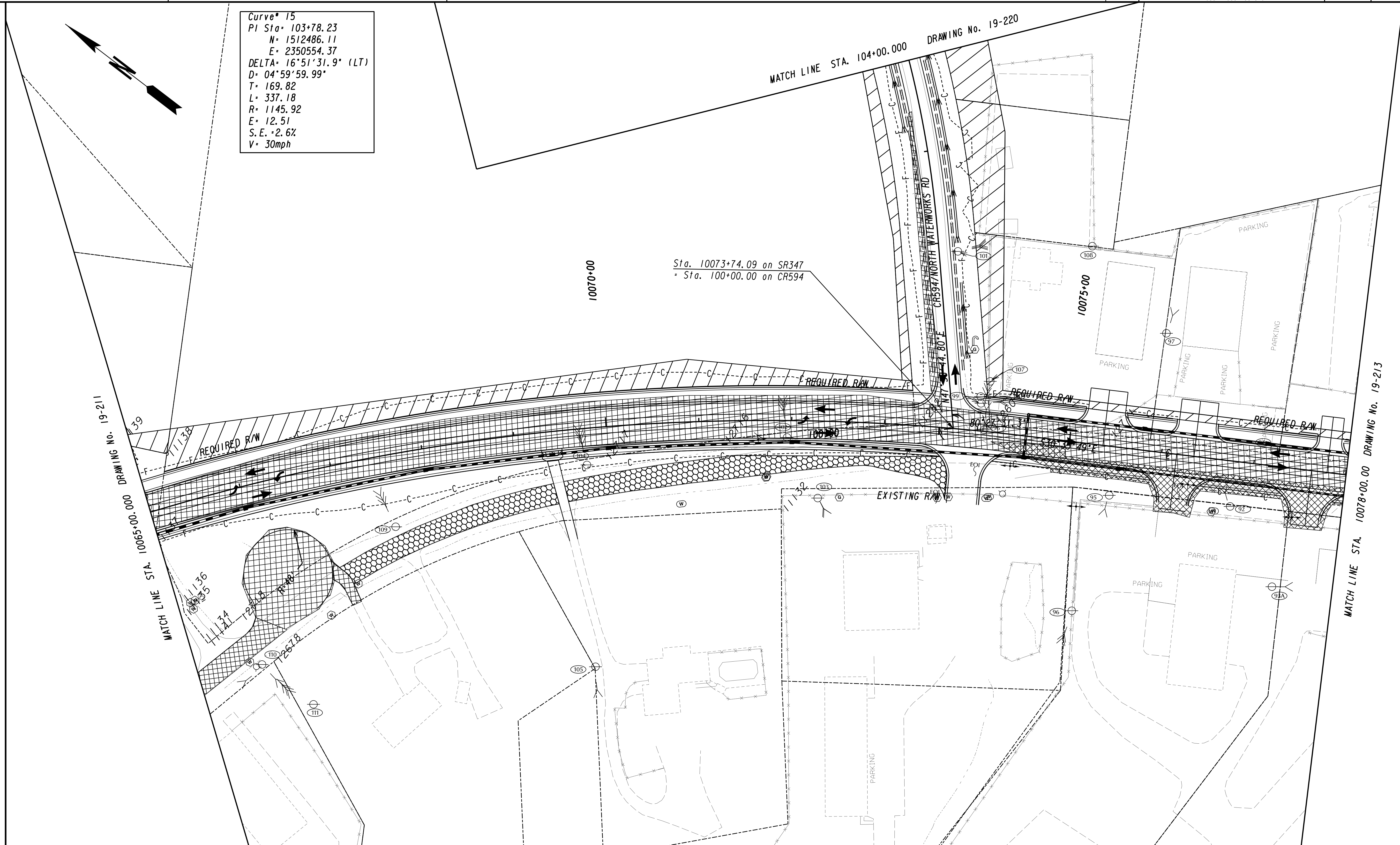


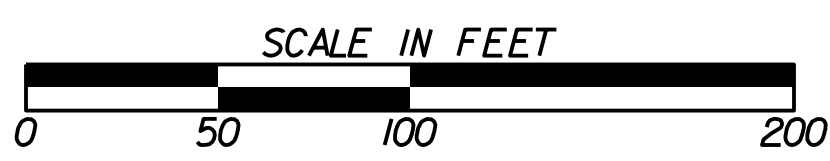
Curve 15
 PI Sta. 103+78.23
 N= 1512486.11
 E= 2350554.37
 DELTA= 16°51'31.9" (LT)
 D= 04°59'59.99"
 T= 169.82
 L= 337.18
 R= 1145.92
 E= 12.51
 S.E.= 2.6%
 V= 30mph



LEGEND

PAVEMENT REMOVAL	
TEMPORARY CONSTRUCTION PAVEMENT	
PERMANENT CONSTRUCTION	
CONCRETE MEDIAN CONSTRUCTION	
WALL & OVERLAY CONSTRUCTION	
OPEN LANES OF TRAFFIC	

GEORGIA
 DEPARTMENT
 OF
 TRANSPORTATION



REVISION DATES

NO.	DATE	DESCRIPTION

STATE OF GEORGIA
 DEPARTMENT OF TRANSPORTATION
 OFFICE: ROADWAY DESIGN
CONSTRUCTION STAGING PLAN
 SR 347 FROM LAKE LANIER TO MCEVER ROAD (STAGE 3)

DRAWING No. 19-212