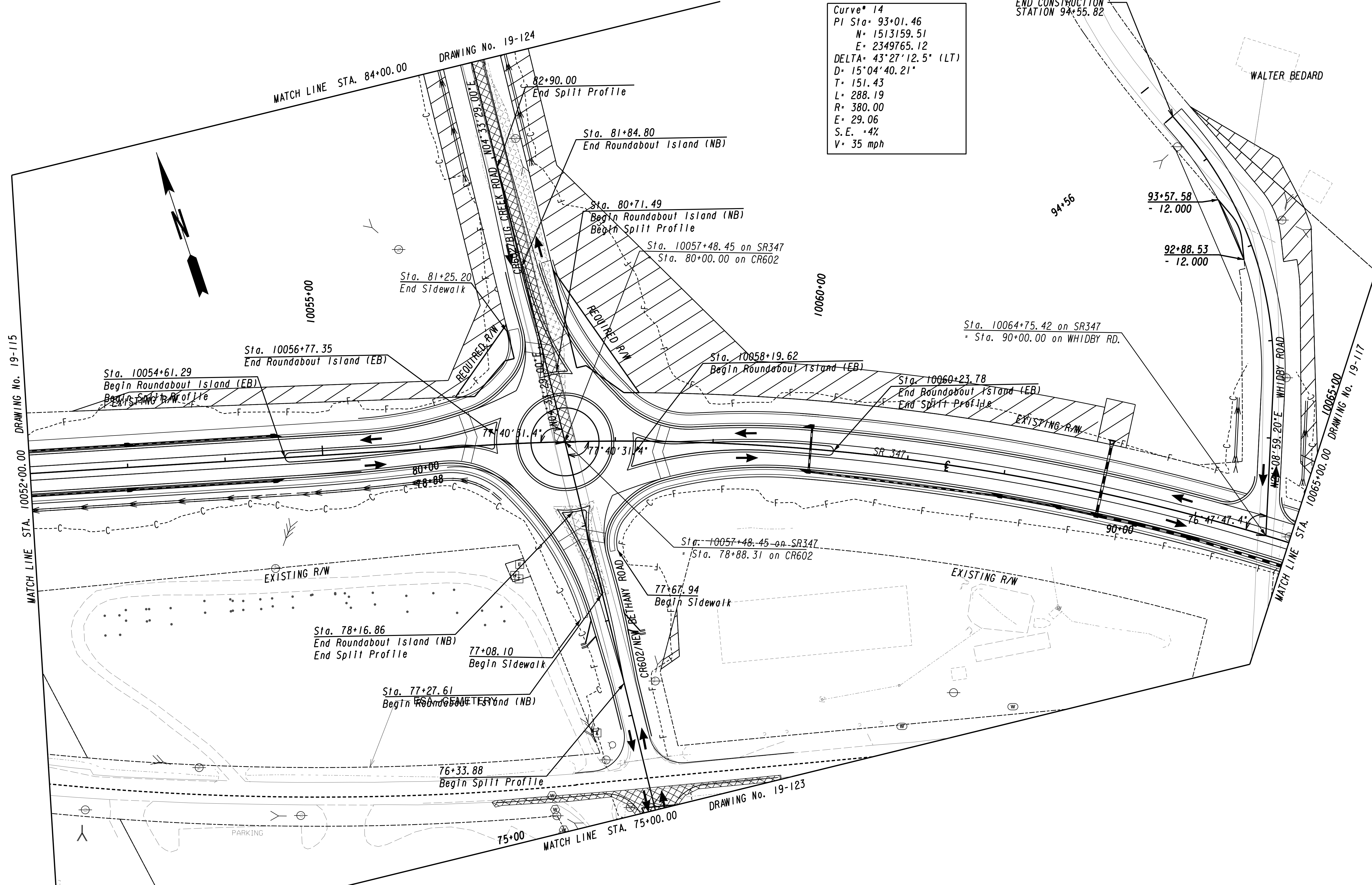


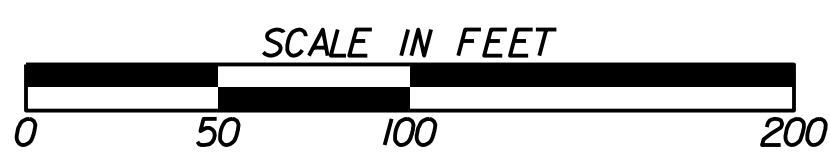
Curve* 14
 PI Sta. 93+01.46
 N= 1513159.51
 E= 2349765.12
 DELTA= 43°27'12.5" (LT)
 D= 15°04'40.21"
 T= 151.43
 L= 288.19
 R= 380.00
 E= 29.06
 S.E. = 4%
 V= 35 mph



LEGEND

PAVEMENT REMOVAL	
TEMPORARY CONSTRUCTION PAVEMENT	
PERMANENT CONSTRUCTION	
CONCRETE MEDIAN CONSTRUCTION	
WALL & OVERLAY CONSTRUCTION	
OPEN LANES OF TRAFFIC	

GEORGIA
 DEPARTMENT
 OF
 TRANSPORTATION



REVISION DATES

STATE OF GEORGIA
 DEPARTMENT OF TRANSPORTATION
 OFFICE: ROADWAY DESIGN
CONSTRUCTION STAGING PLAN
 SR 347 FROM LAKE LANIER TO MCEVER ROAD (STAGE 2)

DRAWING No. 19-116