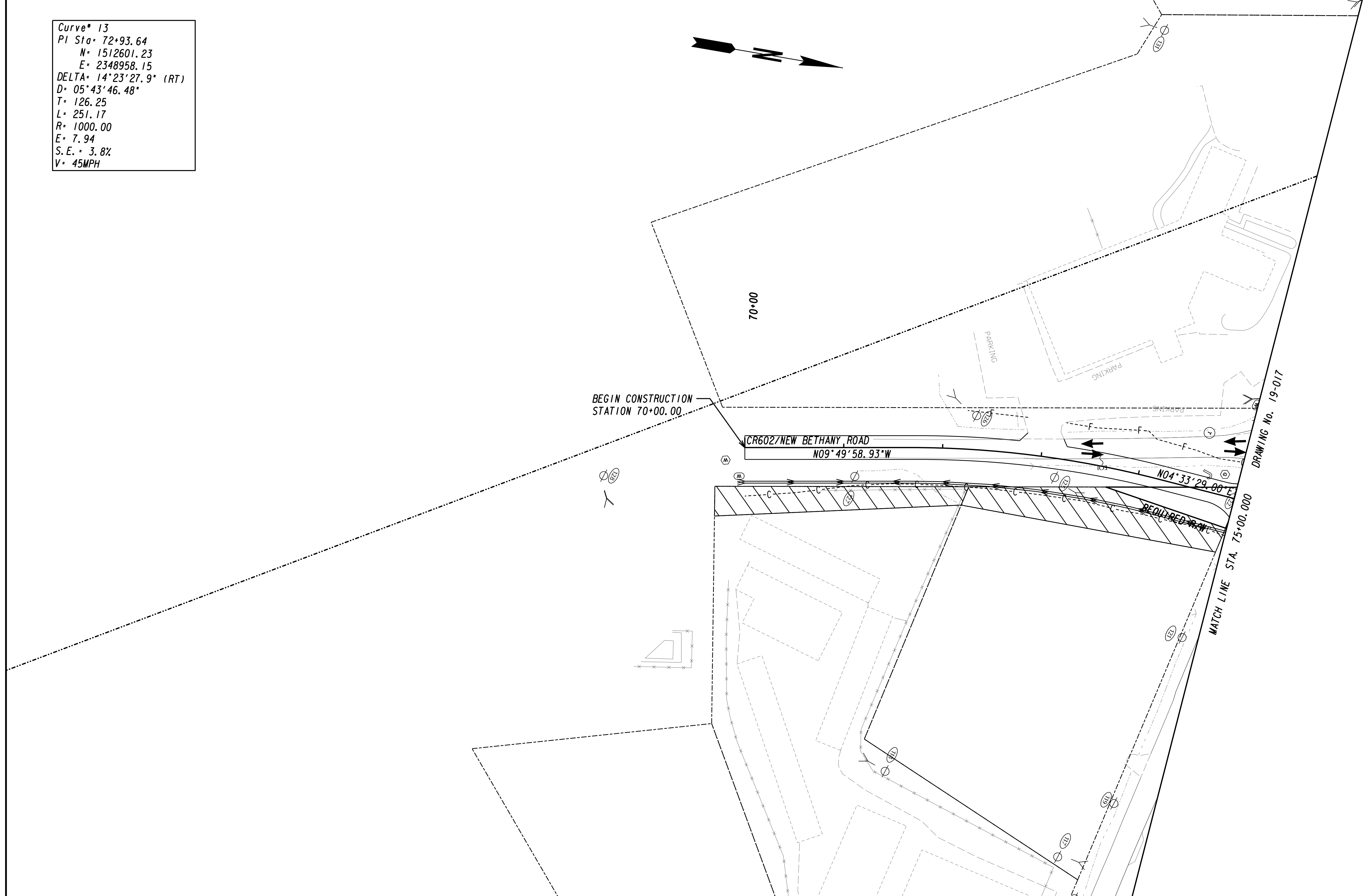


Curve* 13
 PI Sta= 72+93.64
 N= 1512601.23
 E= 2348958.15
 DELTA= 14°23'27.9" (RT)
 D= 05°43'46.48"
 T= 126.25
 L= 251.17
 R= 1000.00
 E= 7.94
 S.E.= 3.8%
 V= 45MPH



LEGEND	
PAVEMENT REMOVAL	
TEMPORARY CONSTRUCTION PAVEMENT	
PERMANENT CONSTRUCTION	
CONCRETE MEDIAN CONSTRUCTION	
WILL & OVERLAY CONSTRUCTION	
OPEN LANES OF TRAFFIC	

GEORGIA
 DEPARTMENT
 OF
 TRANSPORTATION



REVISION DATES	

STATE OF GEORGIA DEPARTMENT OF TRANSPORTATION	OFFICE: ROADWAY DESIGN
CONSTRUCTION STAGING PLAN	
SR 347 FROM LAKE LANIER TO MCEVER ROAD (STAGE 1)	
	DRAWING No. 19-024