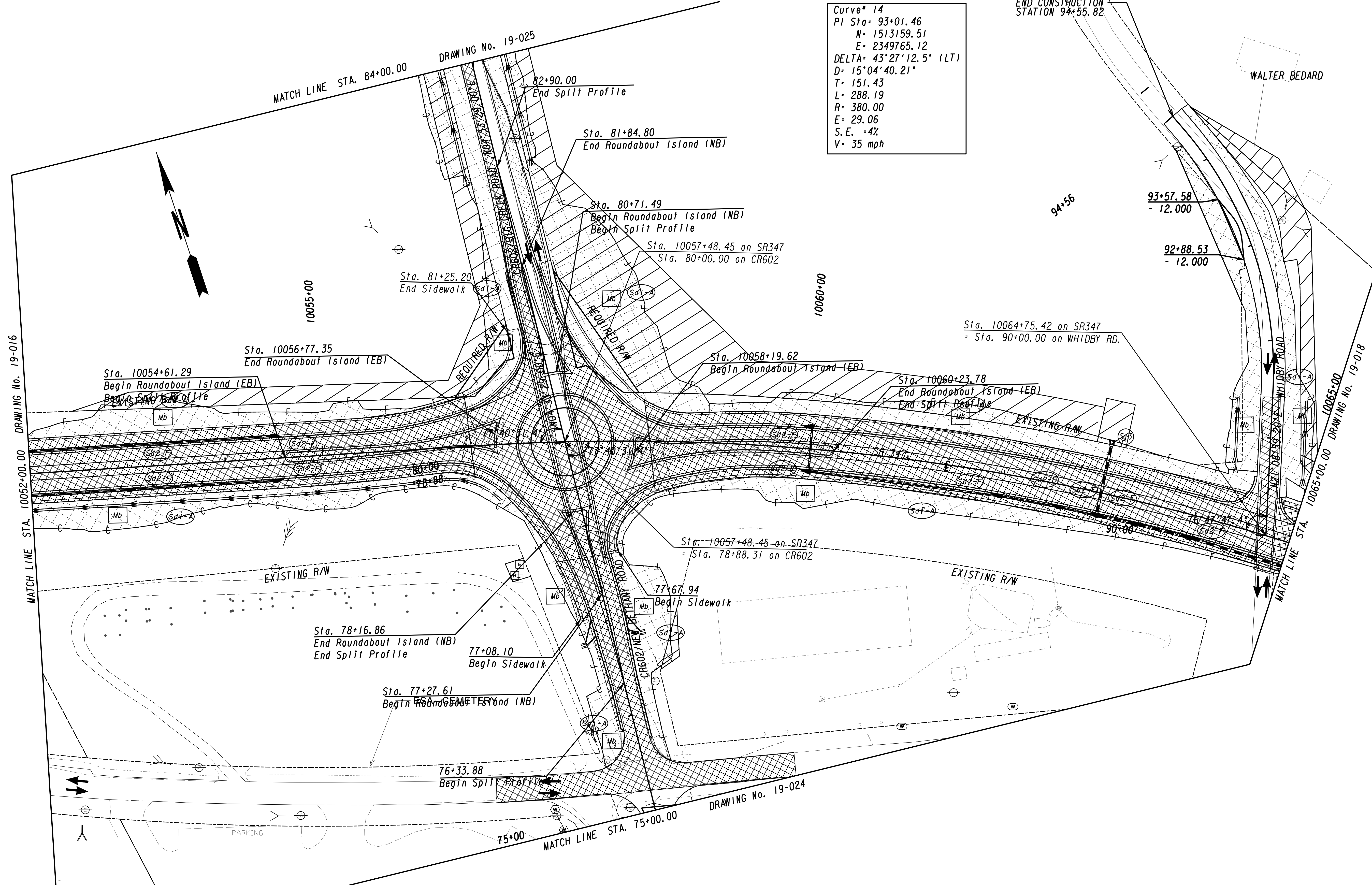


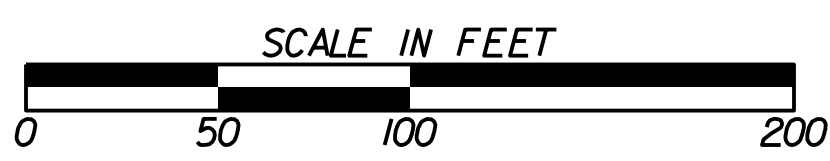
Curve\* 14  
 PI Sta\* 93+01.46  
 N\* 1513159.51  
 E\* 2349765.12  
 DELTA\* 43°27'12.5" (LT)  
 D\* 15°04'40.21"  
 T\* 151.43  
 L\* 288.19  
 R\* 380.00  
 E\* 29.06  
 S.E. +4%  
 V\* 35 mph



**LEGEND**

PAVEMENT REMOVAL	
TEMPORARY CONSTRUCTION PAVEMENT	
PERMANENT CONSTRUCTION	
CONCRETE MEDIAN CONSTRUCTION	
WILL & OVERLAY CONSTRUCTION	
OPEN LANES OF TRAFFIC	

**GEORGIA**  
 DEPARTMENT  
 OF  
 TRANSPORTATION



**REVISION DATES**


STATE OF GEORGIA  
 DEPARTMENT OF TRANSPORTATION  
 OFFICE: ROADWAY DESIGN  
**CONSTRUCTION STAGING PLAN**  
 SR 347 FROM LAKE LANIER TO MCEVER ROAD (STAGE 1)

DRAWING No. 19-017