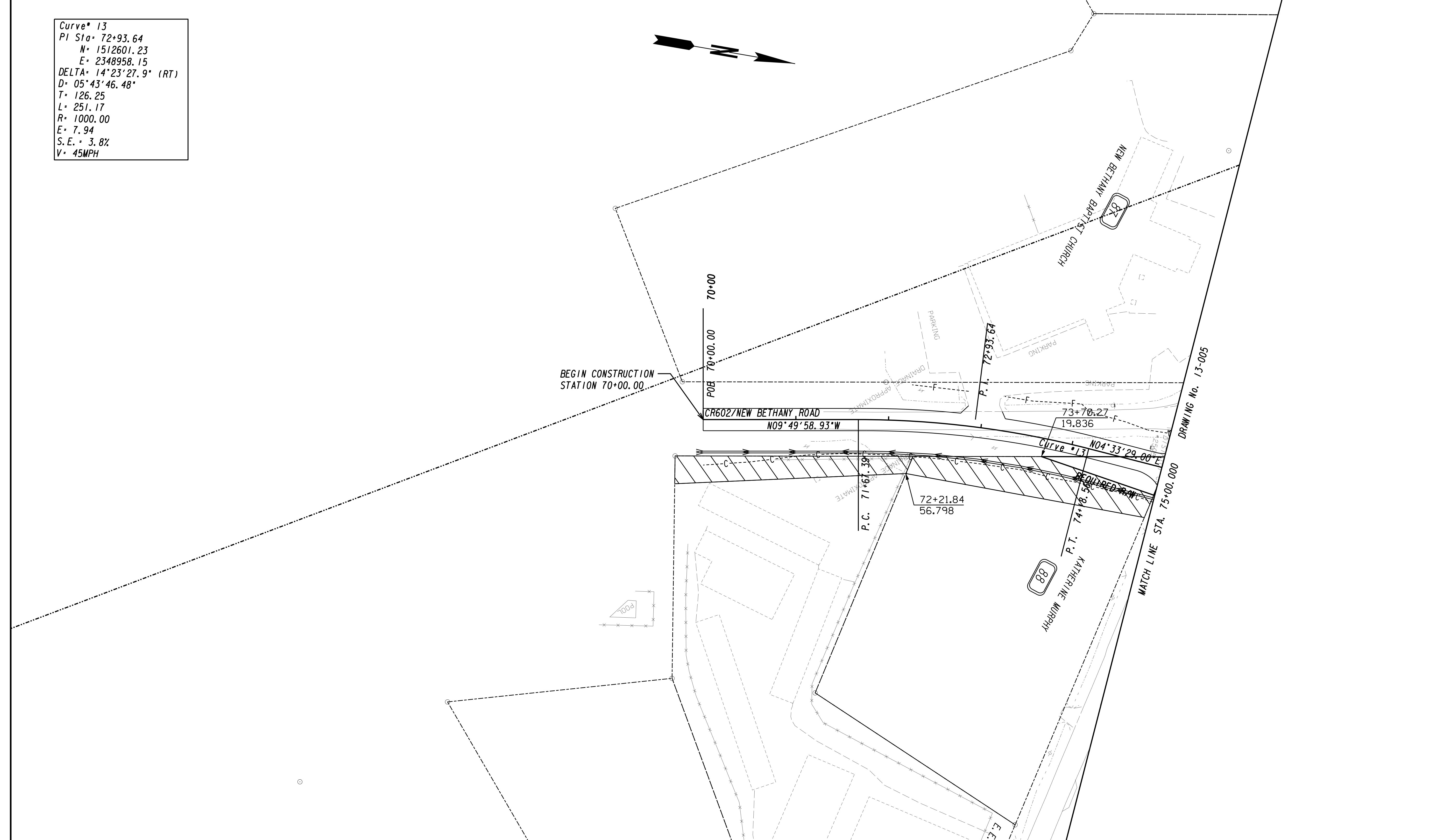
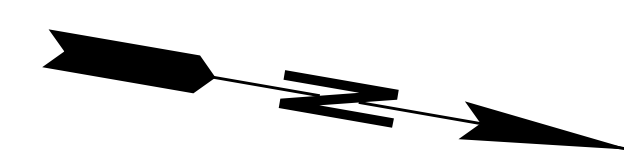


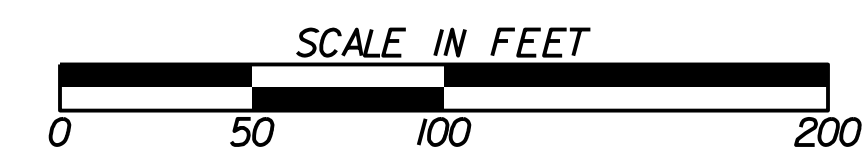
Curve\* 13  
 PI Sta\* 72+93.64  
 N\* 1512601.23  
 E\* 2348958.15  
 DELTA\* 14°23'27.9" (RT)  
 D\* 05°43'46.48"  
 T\* 126.25  
 L\* 251.17  
 R\* 1000.00  
 E\* 7.94  
 S.E.\* 3.8%  
 V\* 45MPH



PROPERTY AND EXISTING R/W LINE  
 REQUIRED R/W LINE  
 CONSTRUCTION LIMITS  
 EASEMENT FOR CONSTR  
 & MAINTENANCE OF SLOPES  
 EASEMENT FOR CONSTR OF SLOPES  
 EASEMENT FOR CONSTR OF DRIVES

---@--- BEGIN LIMIT OF ACCESS.....BLA  
 --- END LIMIT OF ACCESS.....ELA  
 --- LIMIT OF ACCESS  
 --- REQ'D R/W & LIMIT OF ACCESS  
 --- ORANGE BARRIER FENCE  
 --- ENVIRONMENTALLY SENSITIVE AREA  
 ESA - SEE ENVIRONMENTAL RESOURCES IMPACT TABLE IN THE GENERAL NOTES FOR CONSTRUCTION RESTRICTIONS.

**GEORGIA**  
 DEPARTMENT  
 OF  
 TRANSPORTATION



REVISION DATES	

STATE OF GEORGIA  
 DEPARTMENT OF TRANSPORTATION  
 OFFICE: ROADWAY DESIGN  
**CROSSROAD PLAN**  
 SR 347 FROM LAKE LANIER TO  
 MCEVER ROAD  
 DRAWING No. 14-002