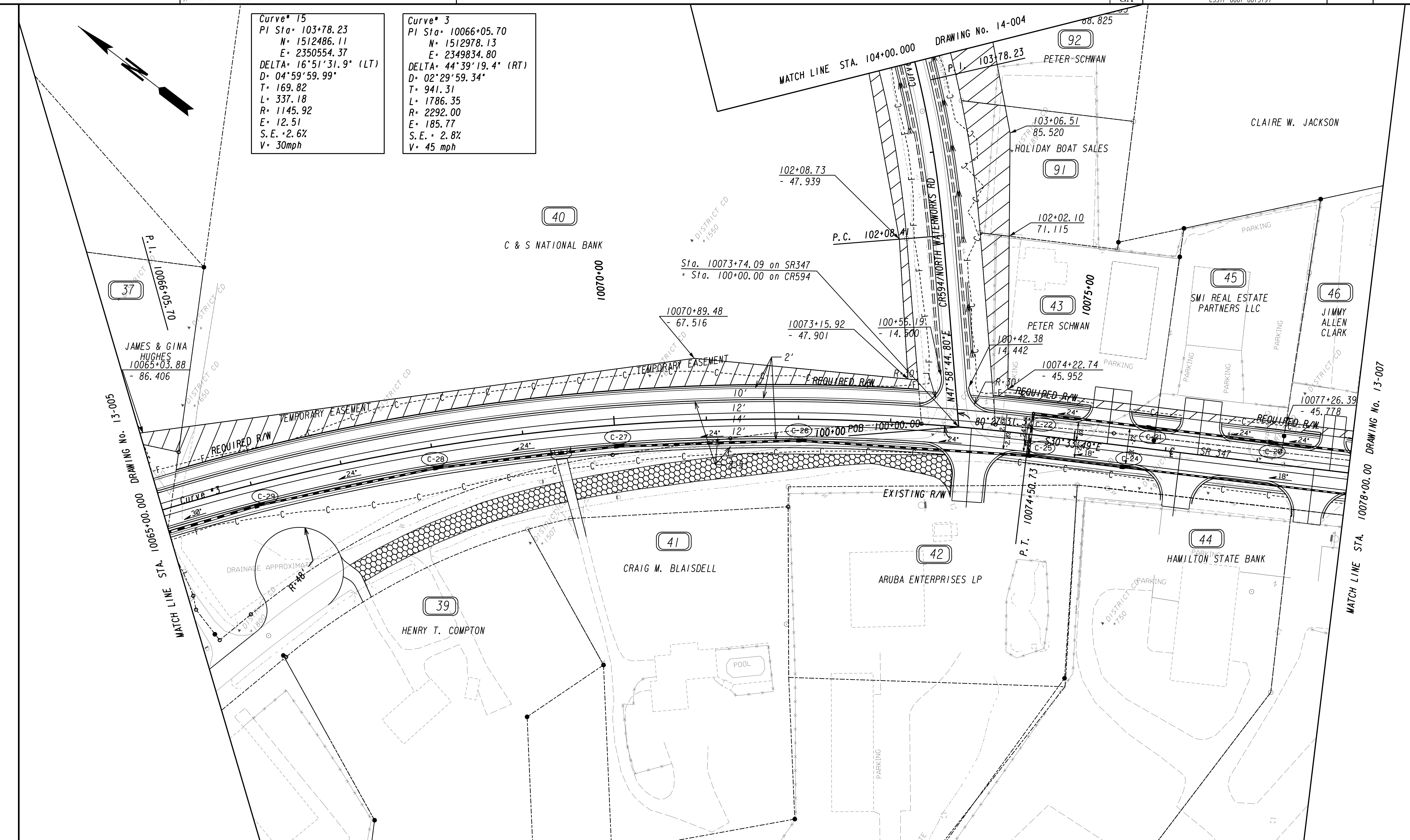


Curve* 15
 PI Sta* 103+78.23
 N* 1512486.11
 E* 2350554.37
 DELTA* 16°51'31.9" (LT)
 D* 04°59'59.99"
 T* 169.82
 L* 337.18
 R* 1145.92
 E* 12.51
 S.E.* 2.6%
 V* 30mph

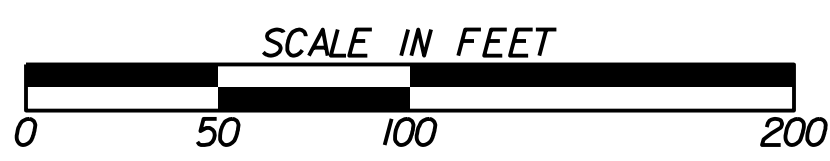
Curve* 3
 PI Sta* 10066+05.70
 N* 1512978.13
 E* 2349834.80
 DELTA* 44°39'19.4" (RT)
 D* 02°29'59.34"
 T* 941.31
 L* 1786.35
 R* 2292.00
 E* 185.77
 S.E.* 2.8%
 V* 45 mph



PROPERTY AND EXISTING R/W LINE
 REQUIRED R/W LINE
 CONSTRUCTION LIMITS
 EASEMENT FOR CONSTR
 & MAINTENANCE OF SLOPES
 EASEMENT FOR CONSTR OF SLOPES
 EASEMENT FOR CONSTR OF DRIVES

BEGIN LIMIT OF ACCESS.....BLA
 END LIMIT OF ACCESS.....ELA
 LIMIT OF ACCESS
 REQ'D R/W & LIMIT OF ACCESS
 ORANGE BARRIER FENCE
 ENVIRONMENTALLY SENSITIVE AREA
 ESA - SEE ENVIRONMENTAL RESOURCES IMPACT TABLE IN
 THE GENERAL NOTES FOR CONSTRUCTION RESTRICTIONS.

GEORGIA
 DEPARTMENT
 OF
 TRANSPORTATION



| REVISION DATES |
|----------------|
| |
| |
| |
| |
| |

STATE OF GEORGIA
 DEPARTMENT OF TRANSPORTATION
 OFFICE: ROADWAY DESIGN
MAINLINE PLAN
 SR 347 FROM LAKE LANIER TO
 MCEVER ROAD

DRAWING No.
13-006