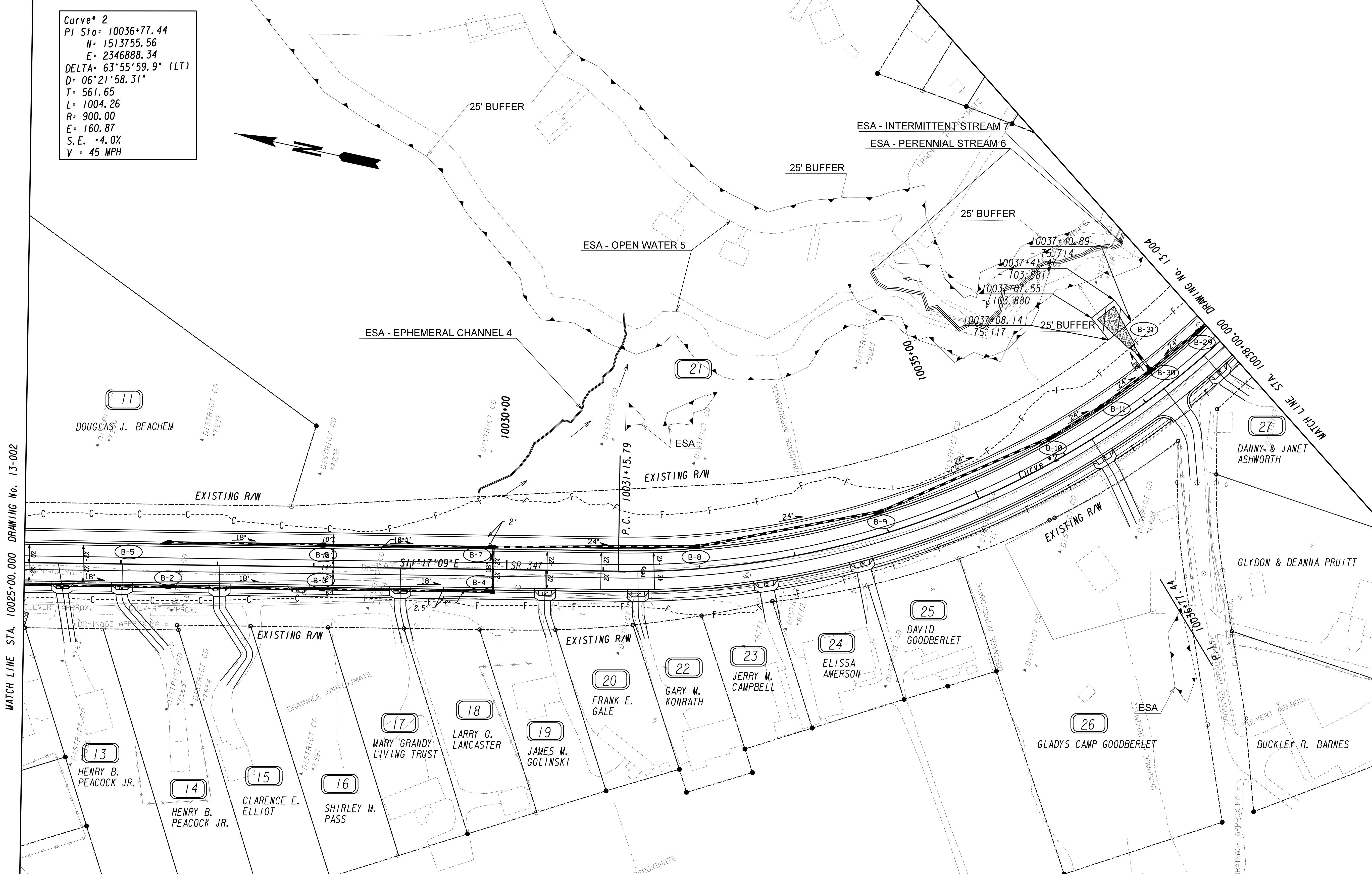


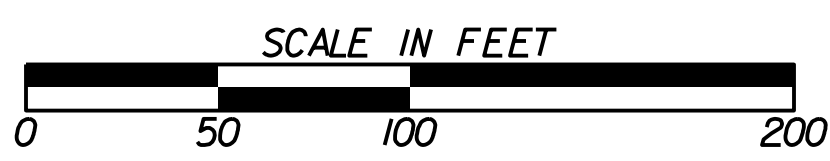
Curve # 2
 PI Sta 10036+77.44
 N = 1513755.56
 E = 2346888.34
 DELTA = 63°55'59.9" (LT)
 D = 06°21'58.31"
 T = 561.65
 L = 1004.26
 R = 900.00
 E = 160.87
 S.E. = 4.0%
 V = 45 MPH



PROPERTY AND EXISTING R/W LINE
 REQUIRED R/W LINE
 CONSTRUCTION LIMITS
 EASEMENT FOR CONSTR
 & MAINTENANCE OF SLOPES
 EASEMENT FOR CONSTR OF SLOPES
 EASEMENT FOR CONSTR OF DRIVES

BEGIN LIMIT OF ACCESS.....BLA
 END LIMIT OF ACCESS.....ELA
 LIMIT OF ACCESS
 REQ'D R/W & LIMIT OF ACCESS
 ORANGE BARRIER FENCE
 ENVIRONMENTALLY SENSITIVE AREA
 ESA - SEE ENVIRONMENTAL RESOURCES IMPACT TABLE IN
 THE GENERAL NOTES FOR CONSTRUCTION RESTRICTIONS.

GEORGIA
 DEPARTMENT
 OF
 TRANSPORTATION



REVISION DATES	

STATE OF GEORGIA
 DEPARTMENT OF TRANSPORTATION
 OFFICE: ROADWAY DESIGN
MAINLINE PLAN
 SR 347 FROM LAKE LANIER TO
 MCEVER ROAD
 DRAWING No. 13-003