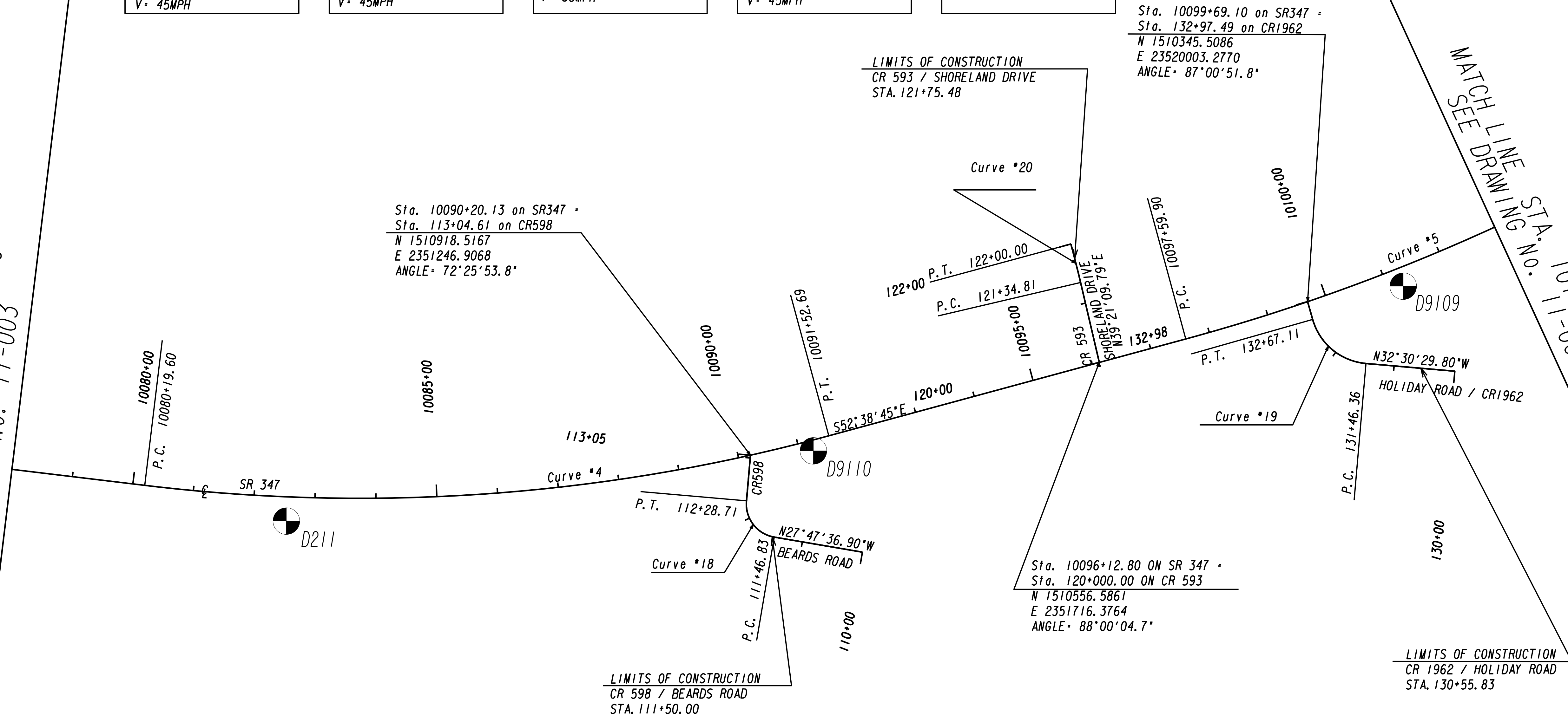


Curve* 4 PI Sta. 10085+93.27 N= 1511183.80 E= 2350894.43 DELTA= 22°04'55.9" (LT) D= 01°56'55.81" T= 573.67' L= 1133.10' R= 2940.00' E= 55.45' S.E. = 2.6% V= 45MPH	Curve* 5 PI Sta. 10106+53.11 N= 1509925.37 E= 2352543.12 DELTA= 30°30'40.3" (LT) D= 01°44'58.16" T= 893.21' L= 1744.01' R= 3275.00' E= 119.62' S.E. = 2.4% V= 45MPH	Curve* 18 PI Sta. 111+97.49 N= 1510850.53 E= 2351140.16 DELTA= 85°17'58.8" (RT) D= 104°10'26.92" T= 50.66' L= 81.88' R= 55.00' E= 19.78' S.E. = 4% V= 35MPH	Curve* 19 PI Sta. 132+15.33 N= 1510266.11 E= 2351944.00 DELTA= 69°11'16.0" (RT) D= 57°17'44.81" T= 68.97' L= 120.76' R= 100.00' E= 21.48' S.E. = 4% V= 45MPH	Curve* 20 PI Sta. 121+67.41 N= 1510686.02 E= 2351822.33 DELTA= 01°57'20.1" (LT) D= 03°00'00.00" T= 32.60' L= 65.19' R= 1909.86' E= 0.28' S.E. = 2% V= 25MPH
--	---	---	--	---

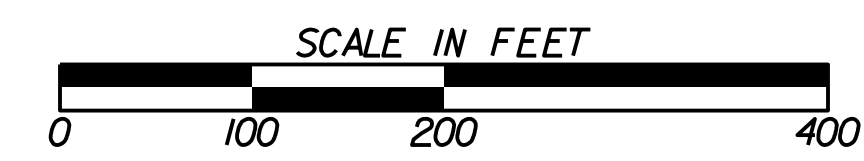
MATCH LINE STA. 10078+00.000
SEE DRAWING No. 11-003

MATCH LINE STA. 10103+00.000
SEE DRAWING No. 11-005



HORIZONTAL / VERTICAL CONTROL							
POINT	NORTHING	EASTING	DESCRIPTION	STATION	OFFSET	ELEVATION	ALIGNMENT
D211	1511457.4650	2350697.6080	3/4 IN. IRON PIN w/GDOT CAP	10082+54.61	39.833	1209.334	SR 347
D9110	1510840.7566	2351315.4176	3/4 IN. IRON PIN w/GDOT CAP	10091+21.99	17.416	1219.223	SR 347
D9109	1510236.6036	2352119.0418	3/4 IN. IRON PIN w/GDOT CAP	10101+24.55	30.375	1217.377	SR 347

GEORGIA
DEPARTMENT
OF
TRANSPORTATION



REVISION DATES		

STATE OF GEORGIA
DEPARTMENT OF TRANSPORTATION
OFFICE: ROADWAY DESIGN
CONSTRUCTION LAYOUT
SR 347 FROM LAKE LANIER TO
MCEVER ROAD
DRAWING No. 11-004