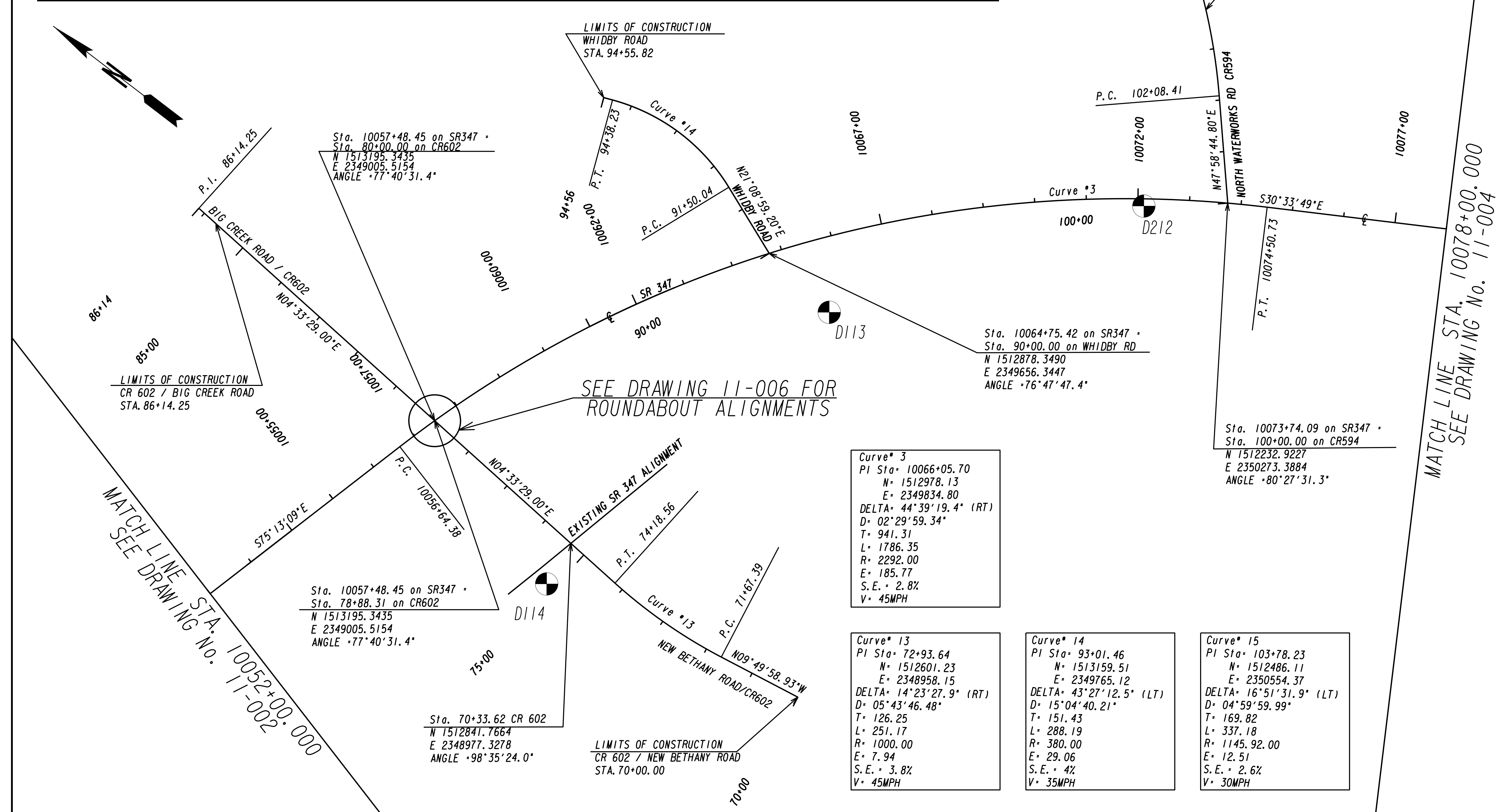


HORIZONTAL / VERTICAL CONTROL							
POINT	NORTHING	EASTING	DESCRIPTION	STATION	OFFSET	ELEVATION	ALIGNMENT
D114	1512831.1775	2348886.5380	3/4 IN. IRON PIN w/GDOT CAP	10057+38.74	383.006	1173.786	SR 347
D113	1512716.7512	2349636.5085	3/4 IN. IRON PIN w/GDOT CAP	10065+57.09	142.312	1178.932	SR 347
D212	1512358.4530	2350170.0220	3/4 IN. IRON PIN w/GDOT CAP	10072+11.56	14.063	1192.318	SR 347



SEE DRAWING 11-006 FOR ROUNDABOUT ALIGNMENTS

MATCH LINE STA. 10052+00.000
 SEE DRAWING No. 11-002

MATCH LINE STA. 10078+00.000
 SEE DRAWING No. 11-004

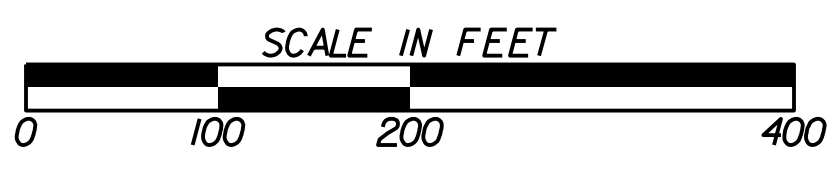
Curve # 3
 PI Sta. 10066+05.70
 N= 1512978.13
 E= 2349834.80
 DELTA= 44°39'19.4" (RT)
 D= 02°29'59.34"
 T= 941.31
 L= 1786.35
 R= 2292.00
 E= 185.77
 S.E. = 2.8%
 V= 45MPH

Curve # 13
 PI Sta. 72+93.64
 N= 1512601.23
 E= 2348958.15
 DELTA= 14°23'27.9" (RT)
 D= 05°43'46.48"
 T= 126.25
 L= 251.17
 R= 1000.00
 E= 7.94
 S.E. = 3.8%
 V= 45MPH

Curve # 14
 PI Sta. 93+01.46
 N= 1513159.51
 E= 2349765.12
 DELTA= 43°27'12.5" (LT)
 D= 15°04'40.21"
 T= 151.43
 L= 288.19
 R= 380.00
 E= 29.06
 S.E. = 4%
 V= 35MPH

Curve # 15
 PI Sta. 103+78.23
 N= 1512486.11
 E= 2350554.37
 DELTA= 16°51'31.9" (LT)
 D= 04°59'59.99"
 T= 169.82
 L= 337.18
 R= 1145.92.00
 E= 12.51
 S.E. = 2.6%
 V= 30MPH

GEORGIA
 DEPARTMENT
 OF
 TRANSPORTATION



REVISION DATES	

STATE OF GEORGIA
 DEPARTMENT OF TRANSPORTATION
 OFFICE: ROADWAY DESIGN
CONSTRUCTION LAYOUT
 SR 347 FROM LAKE LANIER TO
 MCEVER ROAD
 DRAWING No. 11-003