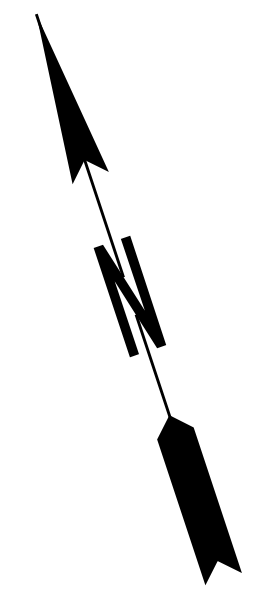
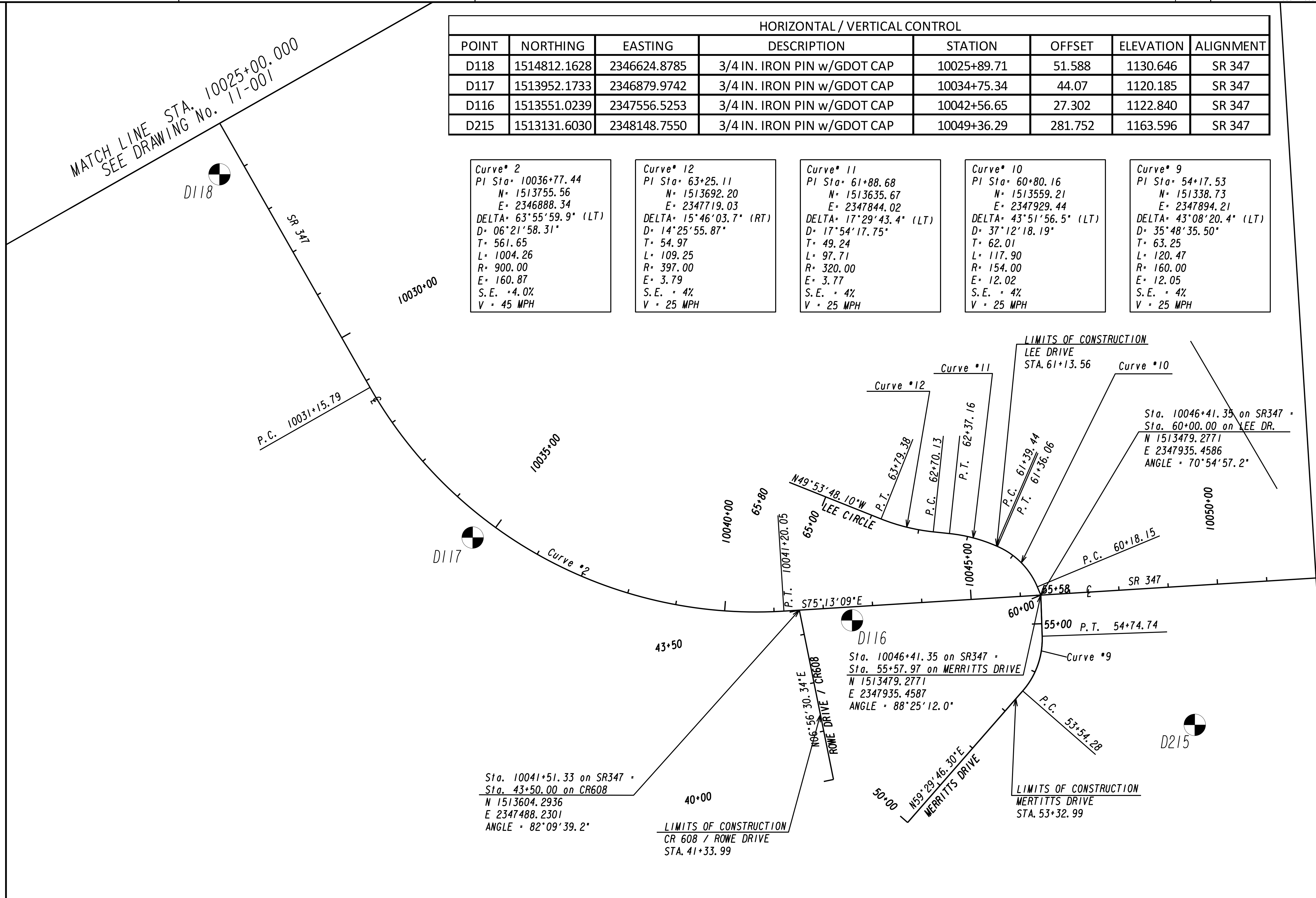
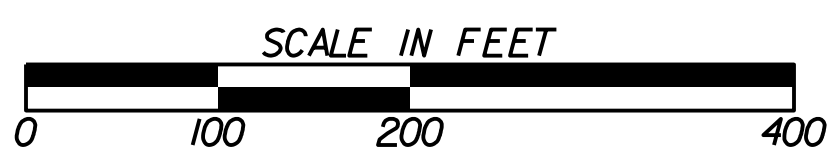


HORIZONTAL / VERTICAL CONTROL							
POINT	NORTHING	EASTING	DESCRIPTION	STATION	OFFSET	ELEVATION	ALIGNMENT
D118	1514812.1628	2346624.8785	3/4 IN. IRON PIN w/GDOT CAP	10025+89.71	51.588	1130.646	SR 347
D117	1513952.1733	2346879.9742	3/4 IN. IRON PIN w/GDOT CAP	10034+75.34	44.07	1120.185	SR 347
D116	1513551.0239	2347556.5253	3/4 IN. IRON PIN w/GDOT CAP	10042+56.65	27.302	1122.840	SR 347
D215	1513131.6030	2348148.7550	3/4 IN. IRON PIN w/GDOT CAP	10049+36.29	281.752	1163.596	SR 347

Curve* 2 PI Sta= 10036+77.44 N= 1513755.56 E= 2346888.34 DELTA= 63°55'59.9" (LT) D= 06°21'58.31" T= 561.65 L= 1004.26 R= 900.00 E= 160.87 S.E. = 4% V = 45 MPH	Curve* 12 PI Sta= 63+25.11 N= 1513692.20 E= 2347719.03 DELTA= 15°46'03.7" (RT) D= 14°25'55.87" T= 54.97 L= 109.25 R= 397.00 E= 3.79 S.E. = 4% V = 25 MPH	Curve* 11 PI Sta= 61+88.68 N= 1513635.67 E= 2347844.02 DELTA= 17°29'43.4" (LT) D= 17°54'17.75" T= 49.24 L= 97.71 R= 320.00 E= 3.77 S.E. = 4% V = 25 MPH	Curve* 10 PI Sta= 60+80.16 N= 1513559.21 E= 2347929.44 DELTA= 43°51'56.5" (LT) D= 37°12'18.19" T= 62.01 L= 117.90 R= 154.00 E= 12.02 S.E. = 4% V = 25 MPH	Curve* 9 PI Sta= 54+17.53 N= 151338.73 E= 2347894.21 DELTA= 43°08'20.4" (LT) D= 35°48'35.50" T= 63.25 L= 120.47 R= 160.00 E= 12.05 S.E. = 4% V = 25 MPH
--	--	---	---	---



GEORGIA
DEPARTMENT
OF
TRANSPORTATION



REVISION DATES	

STATE OF GEORGIA
DEPARTMENT OF TRANSPORTATION
OFFICE: ROADWAY DESIGN
CONSTRUCTION LAYOUT
SR 347 FROM LAKE LANIER TO
MCEVER ROAD

DRAWING No.
11-002