

DEPARTMENT OF TRANSPORTATION STATE OF GEORGIA

PLAN AND PROFILE OF PROPOSED

BRIDGE REPLACEMENT SR 64 @ TEN MILE CREEK 6.5 MI NORTHWEST OF LAKELAND

FEDERAL AID PROJECT
CSBRG-0007-00(181)
LANIER COUNTY

FEDERAL ROUTE * NONE
STATE ROUTE * 64

REQUIRED 220' x 34' P.I. NO. 0007181

ESA - SEE ENVIRONMENTAL RESOURCES
IMPACT TABLE IN GENERAL NOTES FOR
CONSTRUCTION RESTRICTIONS

NOTE :
ALL REFERENCES IN THIS DOCUMENT, WHICH INCLUDES ALL PAPERS, WRITINGS,
DOCUMENTS, DRAWINGS, OR PHOTOGRAPHS USED, OR TO BE USED IN CONNECTION
WITH THIS DOCUMENT, TO "STATE HIGHWAY DEPARTMENT OF GEORGIA," "STATE
HIGHWAY DEPARTMENT," "GEORGIA STATE HIGHWAY DEPARTMENT," "HIGHWAY
DEPARTMENT," OR "DEPARTMENT" WHEN THE CONTEXT THEREOF MEANS THE
STATE HIGHWAY DEPARTMENT OF GEORGIA, AND SHALL BE DEEMED TO MEAN
THE DEPARTMENT OF TRANSPORTATION.

ROAD SHALL BE CLOSED
DURING CONSTRUCTION

PREPARED BY: JASON T. WIGGINS
DESIGN ENGINEER 3

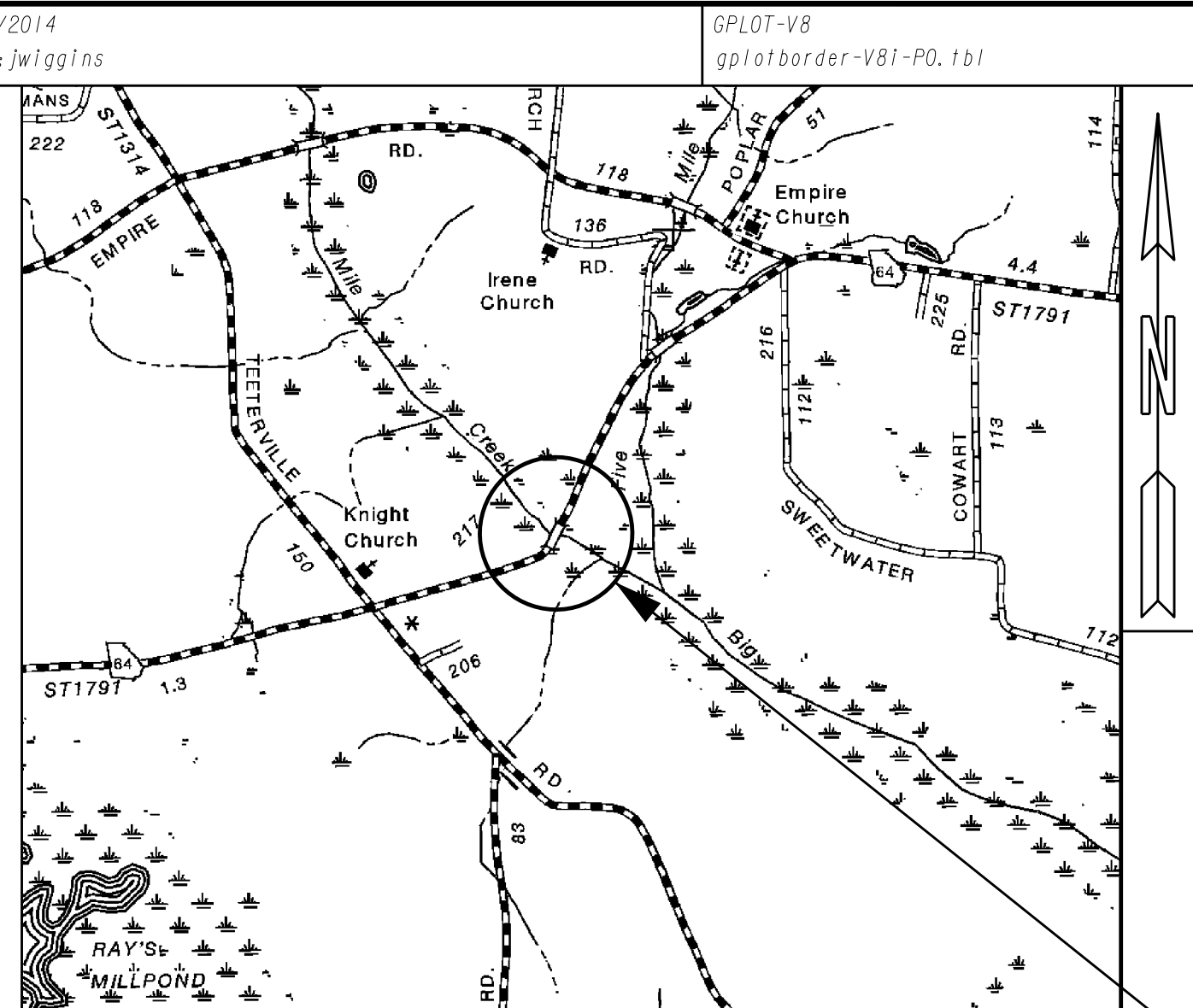
RECOMMENDED FOR
SUBMISSION BY: RALPH S. GRIFFIN
DISTRICT DESIGN ENGINEER

SUBMITTED BY: _____
DISTRICT ENGINEER

DATE _____ CHIEF ENGINEER

PLANS COMPLETED	REVISIONS	L&D APPROVAL DATE
- -		

DRAWING No.
01-001



LOCATION SKETCH

DESIGN DATA:
TRAFFIC A.D.T.: 450 (2018)
TRAFFIC A.D.T.: 600 (2038)
TRAFFIC D.H.V.: 60 (2038)
DIRECTIONAL DIST: 60%
% TRUCKS: 9.5%
24 HR. TRUCKS %: 11.0%
SPEED DESIGN: 55 MPH

LOCATION & DESIGN
APPROVAL DATE:

FUNCTIONAL CLASS:
RURAL MAJOR COLLECTOR

THIS PROJECT IS 100% IN LANIER
COUNTY AND IS 100% IN
CONG. DIST. NO. 8.

PROJECT DESIGNATION: EXEMPT

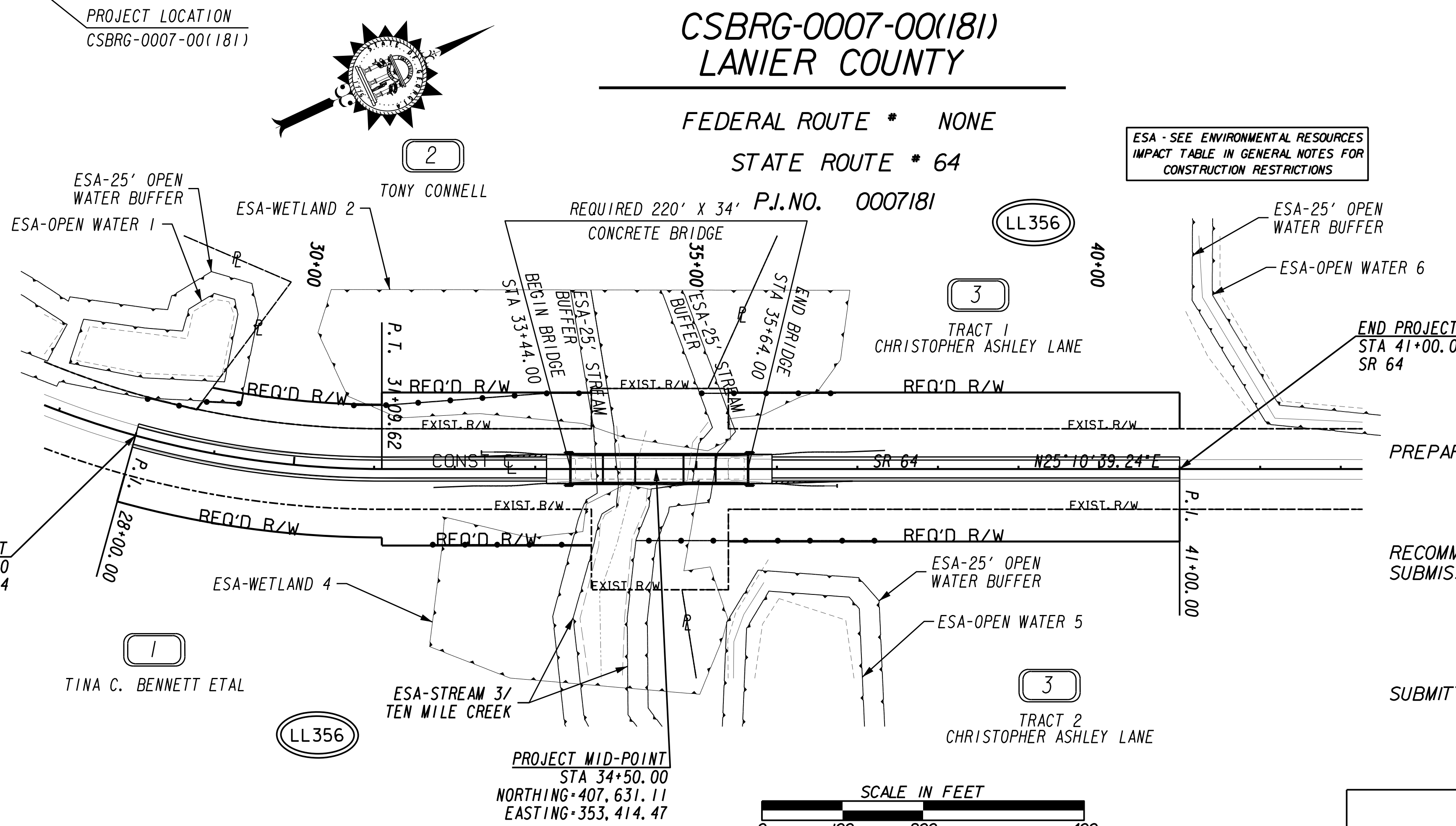
THIS PROJECT HAS BEEN PREPARED
USING THE HORIZONTAL GEORGIA
COORDINATE SYSTEM OF 1984 (NAD
1983/94 WEST ZONE, AND THE NORTH
AMERICAN VERTICAL DATUM (NAVD)
OF 1988.

MID-POINT COORDINATES
STATION 34+50.00
N 407,631.11
E 353,414.47

L.L. 356
L.D. 10th
G.M.D. 1300

CSBRG-0007-00(181) LANIER COUNTY

THE DATA, TOGETHER WITH ALL OTHER INFORMATION SHOWN ON THESE PLANS OR IN ANYWAY
INDICATED THEREBY, WHETHER BY DRAWINGS OR NOTES, OR IN ANY OTHER MANNER, ARE BASED UPON
FIELD INVESTIGATIONS AND ARE BELIEVED TO BE INDICATIVE OF ACTUAL CONDITIONS. HOWEVER, THE
SAME ARE SHOWN AS INFORMATION ONLY, ARE NOT GUARANTEED, AND DO NOT BIND THE DEPARTMENT
OF TRANSPORTATION IN ANY WAY. THE ATTENTION OF BIDDER IS SPECIFICALLY DIRECTED TO
SUBSECTIONS 102.04, 102.05, AND 104.03 OF THE SPECIFICATIONS.



LENGTH OF PROJECT	COUNTY No. 173
	Project No. 0007181
	MILES
NET LENGTH OF ROADWAY	0.205
NET LENGTH OF BRIDGES	0.042
NET LENGTH OF PROJECT	0.247
NET LENGTH OF EXCEPTIONS	0.000
GROSS LENGTH OF PROJECT	0.247