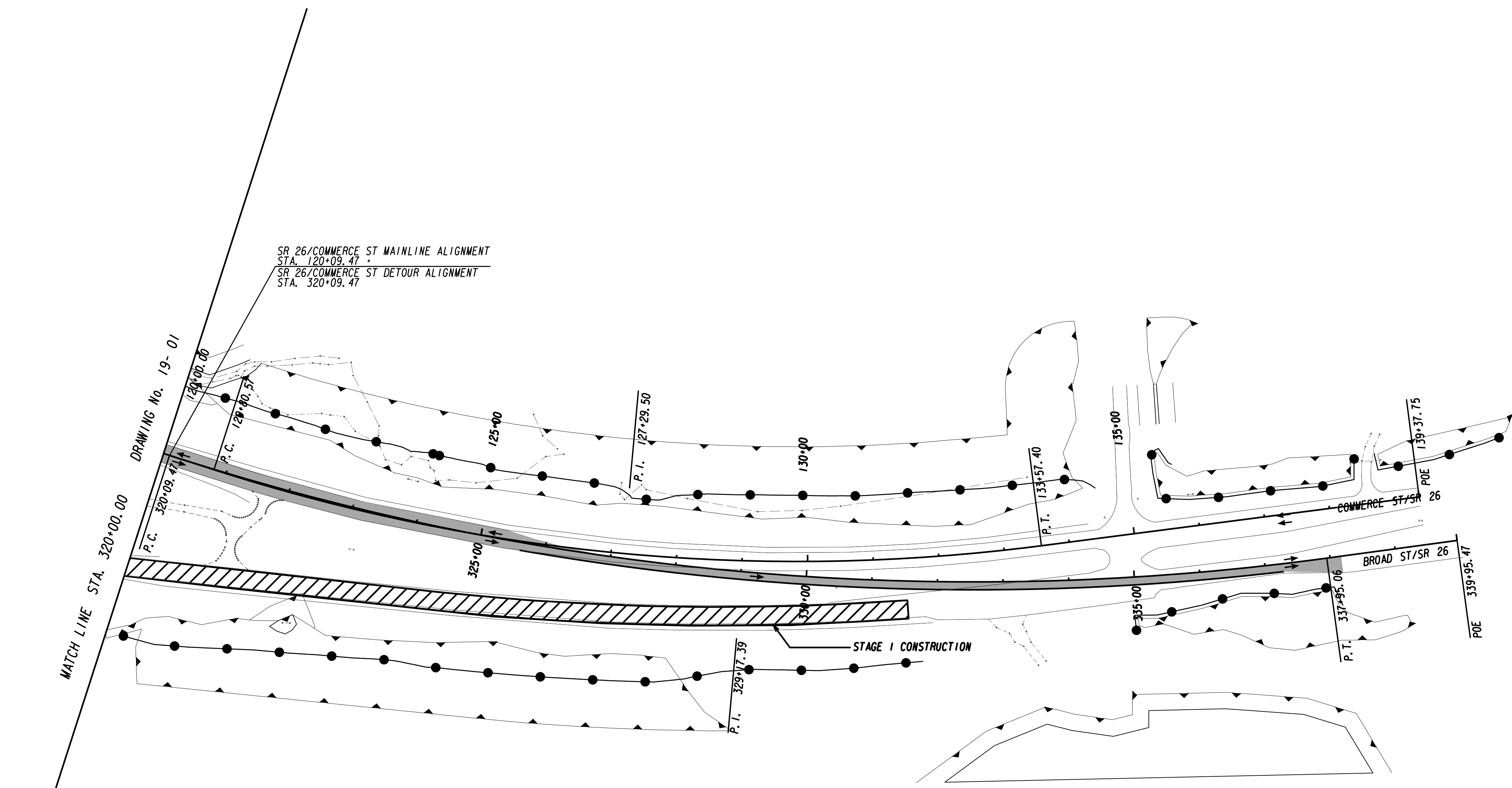


STAGE I



SEQUENCE OF OPERATIONS

(A) DETOUR TRAFFIC ONTO BRIDGE* 2 - COMMERCE ST TO PROVIDE ONE LANE IN EACH DIRECTION AS SHOWN.

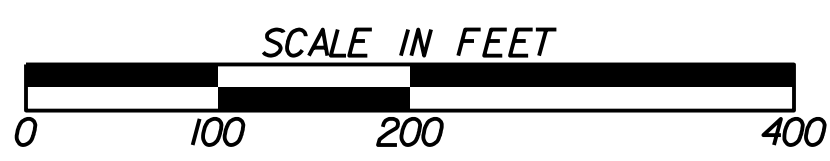
(B) DEMOLISH AND RECONSTRUCT BRIDGE* 1 AS PER THE PLANS.

NOTE: THE SPEED DESIGN THROUGH THE CONSTRUCTION ZONE IS 35 MPH. INBOUND TRUCK TRAFFIC IS TO PROCEED ALONG SR 26/COMMERCE STREET AND MAKE A LEFT TURN ONTO HOUSTON STREET; THEN PROCEED DOWN HOUSTON STREET AND MAKE A RIGHT TURN ONTO SR 26/BROAD STREET.

LEGEND

| | |
|--|-----------------------|
| | CONSTRUCTION |
| | LANES OPEN TO TRAFFIC |
| | TRUCK DETOUR ROUTE |

GEORGIA
DEPARTMENT
OF
TRANSPORTATION



REVISION DATES

| | | |
|--|--|--|
| | | |
| | | |
| | | |
| | | |
| | | |
| | | |

STATE OF GEORGIA
DEPARTMENT OF TRANSPORTATION
OFFICE: ROADWAY DESIGN

**CONSTRUCTION STAGING
PLAN**

SR @ 26 OCMULGEE RIVER
STAGE I

DRAWING No.
19-002