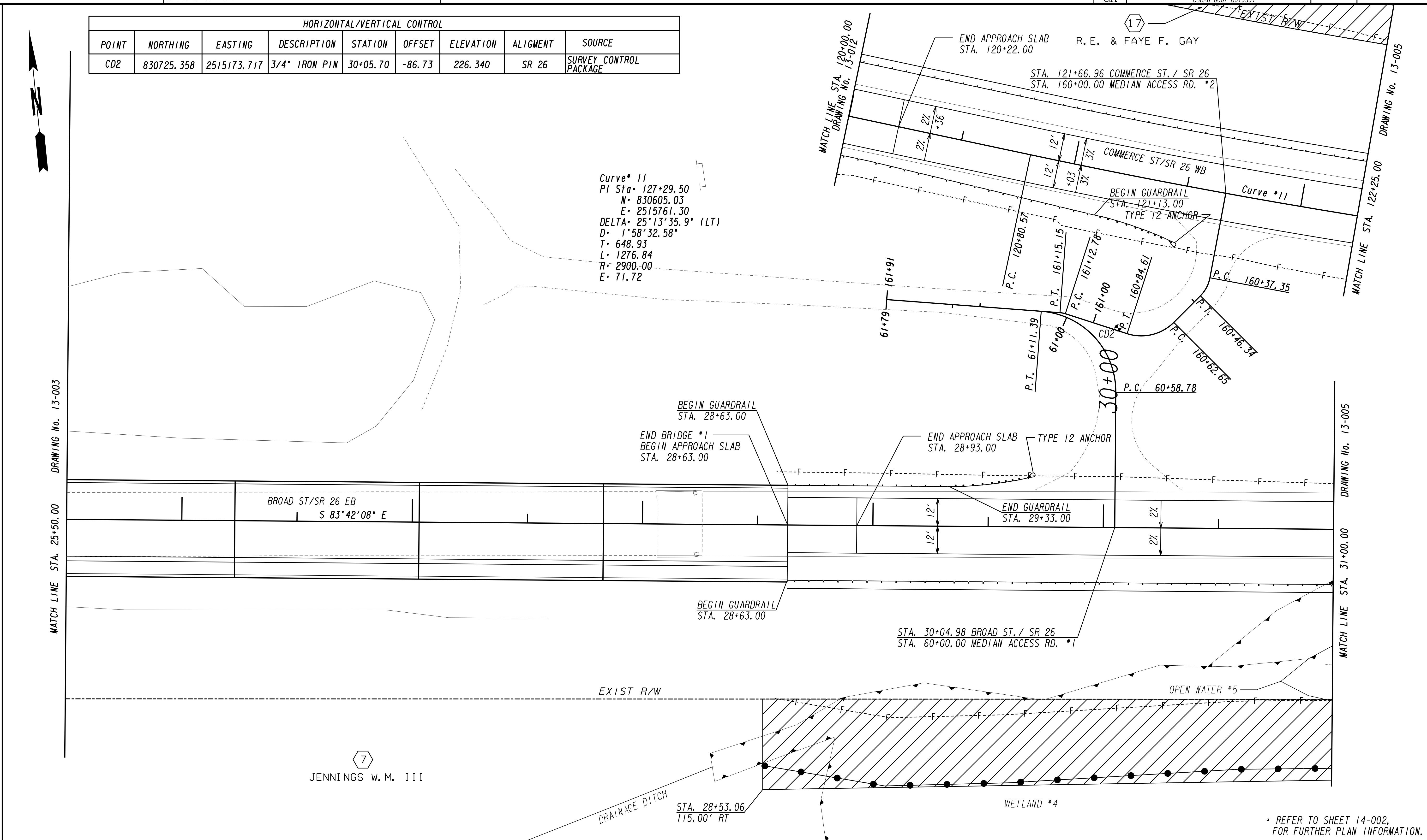


HORIZONTAL/VERTICAL CONTROL								
POINT	NORTHING	EASTING	DESCRIPTION	STATION	OFFSET	ELEVATION	ALIGNMENT	SOURCE
CD2	830725.358	2515173.717	3/4" IRON PIN	30+05.70	-86.73	226.340	SR 26	SURVEY CONTROL PACKAGE

Curve *11
 PI Sta= 127+29.50
 N= 830605.03
 E= 2515761.30
 DELTA= 25°13'35.9" (LT)
 D= 1°58'32.58"
 T= 648.93
 L= 1276.84
 R= 2900.00
 E= 71.72



PROPERTY AND EXISTING R/W LINE	---
REQUIRED R/W LINE	---
CONSTRUCTION LIMITS	---
EASEMENT FOR CONSTR & MAINTENANCE OF SLOPES	---
EASEMENT FOR CONSTR OF SLOPES	---
EASEMENT FOR CONSTR OF DRIVES	---

BEGIN LIMIT OF ACCESS.....BLA	---
END LIMIT OF ACCESS.....ELA	---
LIMIT OF ACCESS	---
REQ'D R/W & LIMIT OF ACCESS	---
ORANGE BARRIER FENCE	---
ENVIRONMENTALLY SENSITIVE AREA	---
ESA - SEE ENVIRONMENTAL RESOURCES IMPACT TABLE IN THE GENERAL NOTES FOR CONSTRUCTION RESTRICTIONS.	---

GEORGIA
 DEPARTMENT
 OF
 TRANSPORTATION



REVISION DATES	

STATE OF GEORGIA
 DEPARTMENT OF TRANSPORTATION
 OFFICE: ROADWAY DESIGN
MAINLINE PLAN
 SR 26 @ OCMULGEE RIVER

* REFER TO SHEET 14-002, FOR FURTHER PLAN INFORMATION.

DRAWING No. 13-004