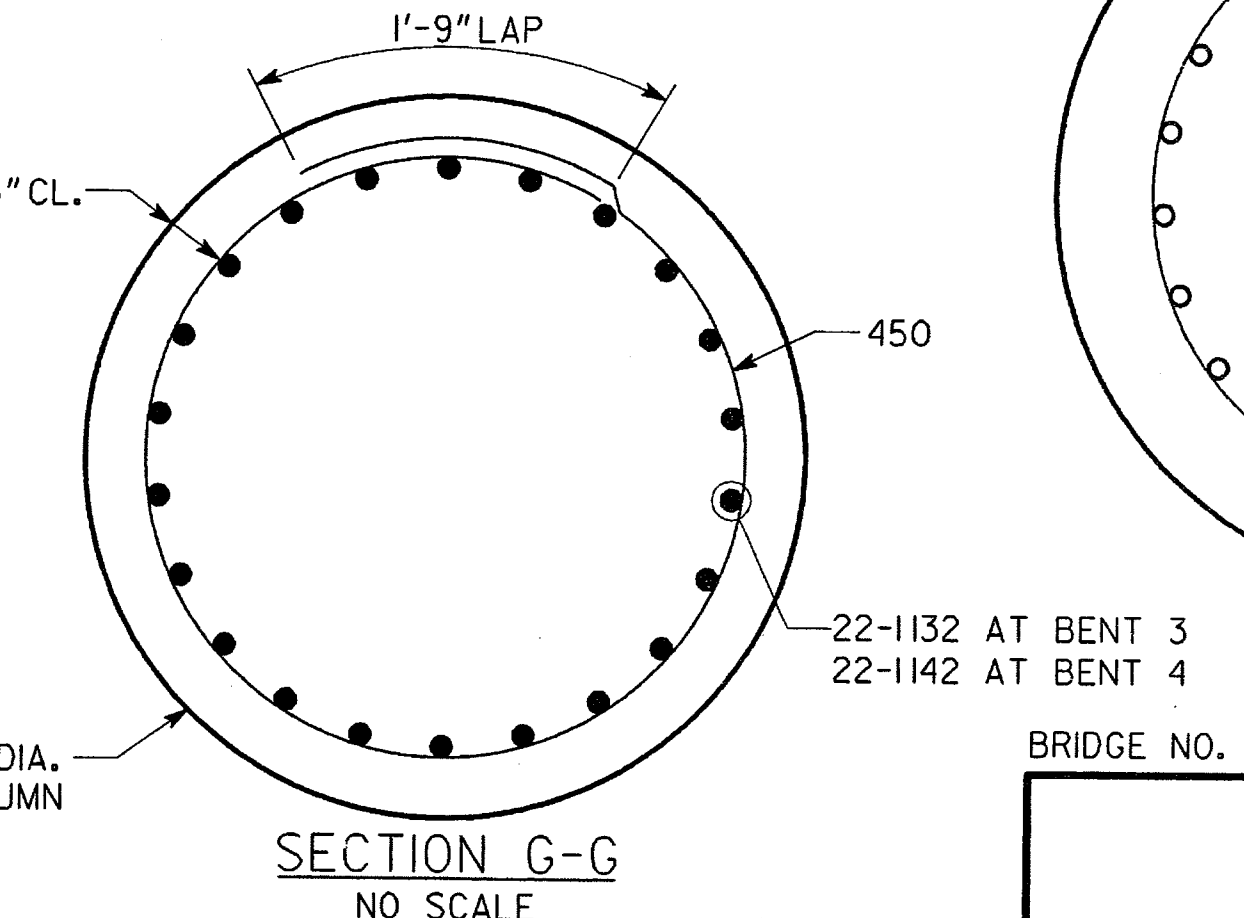
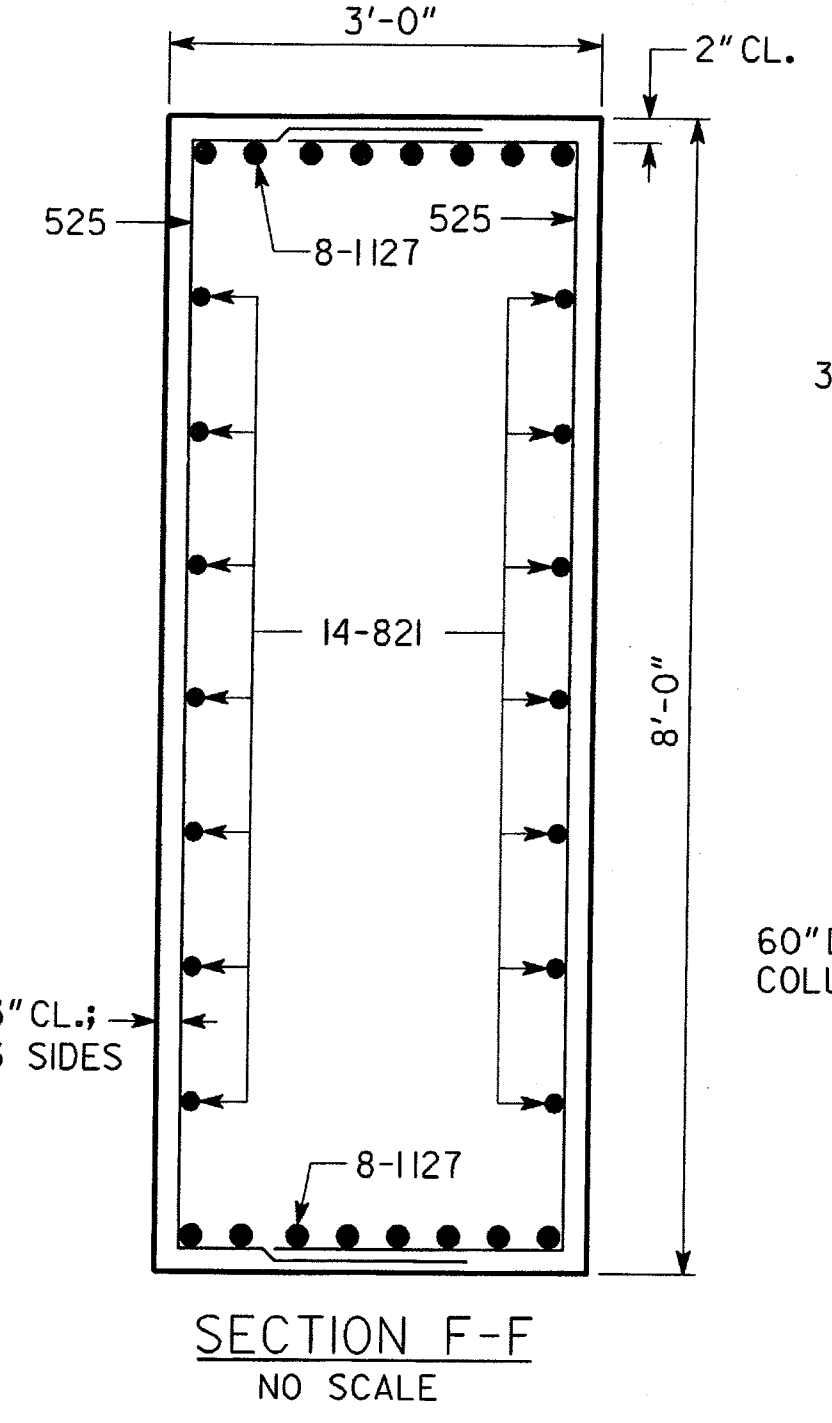
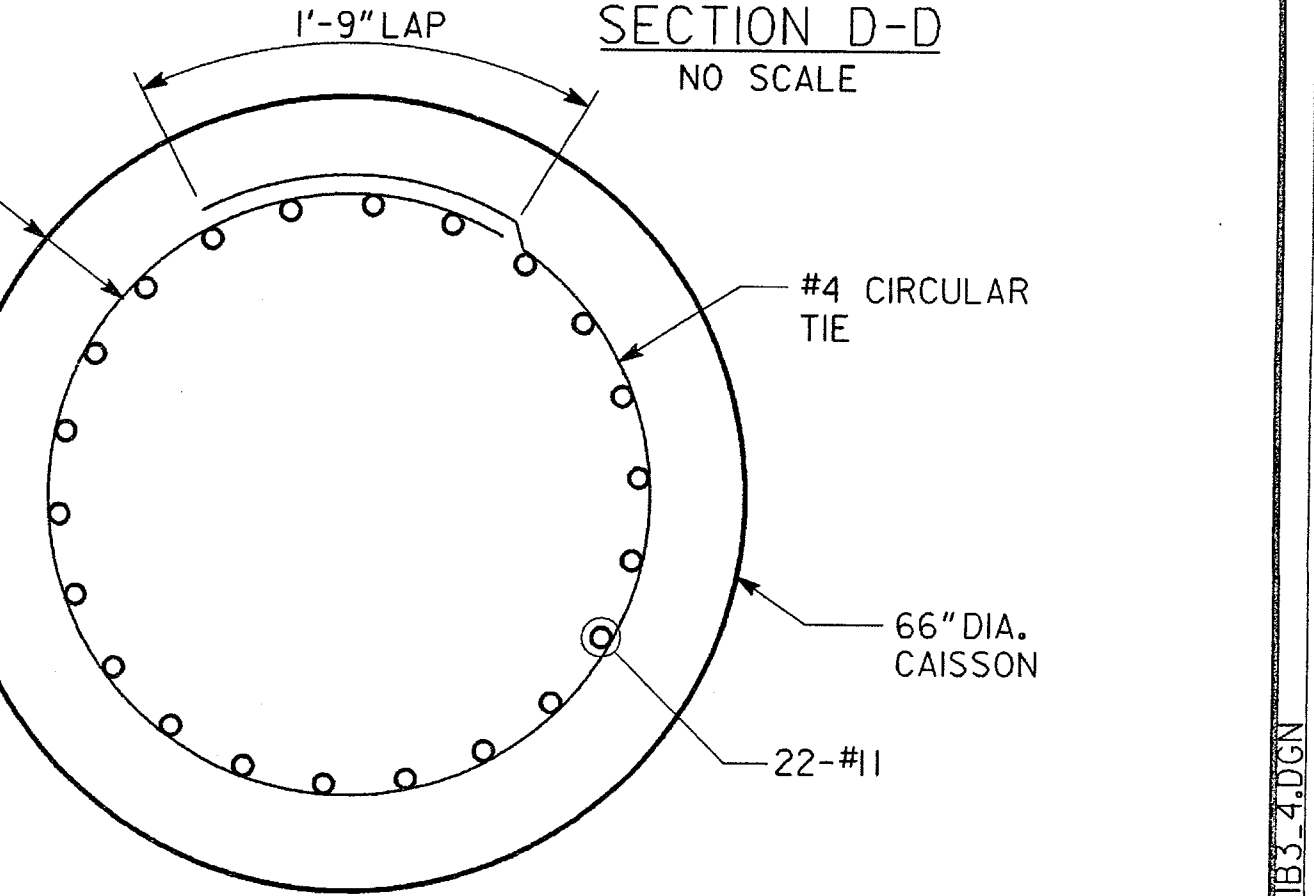
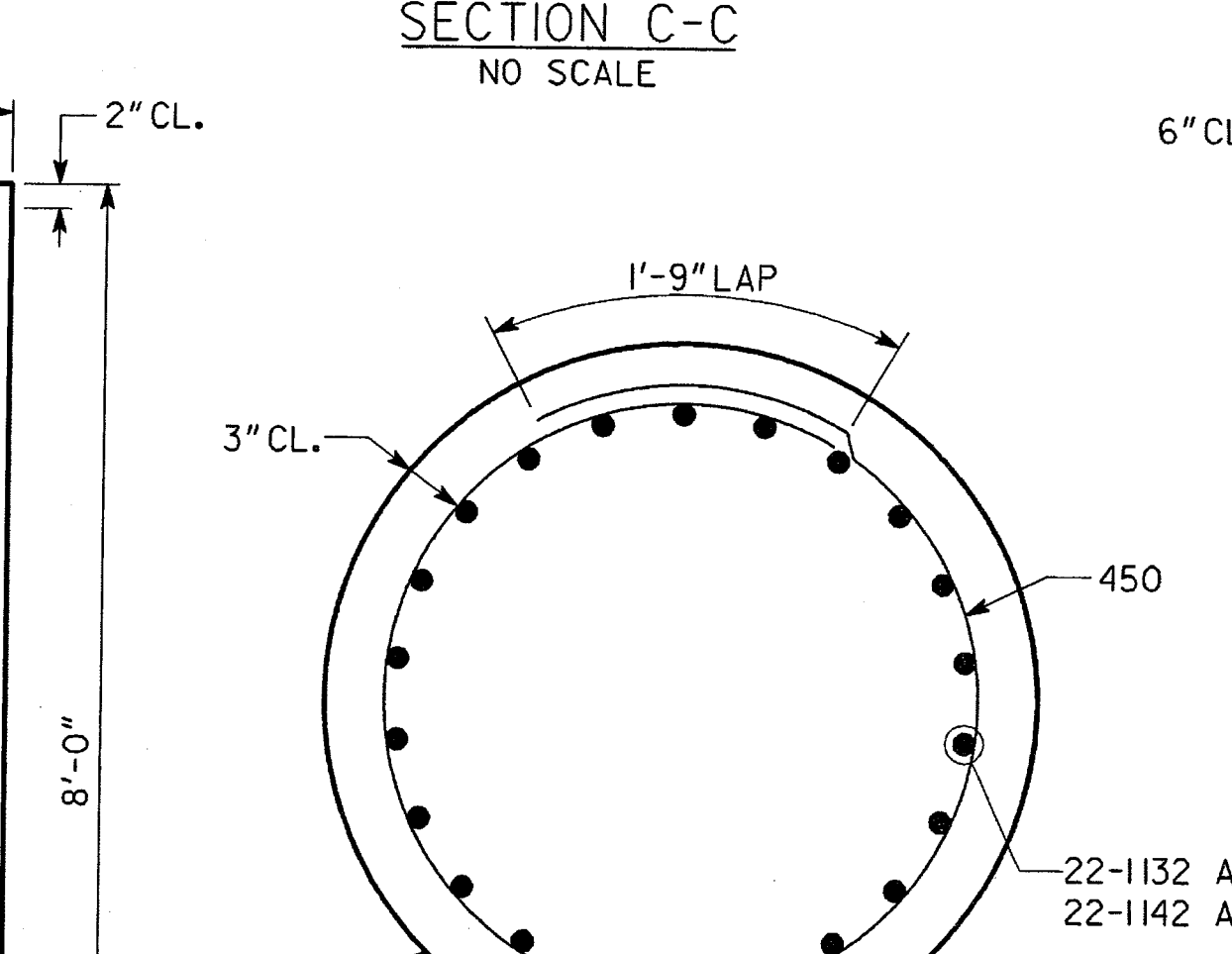
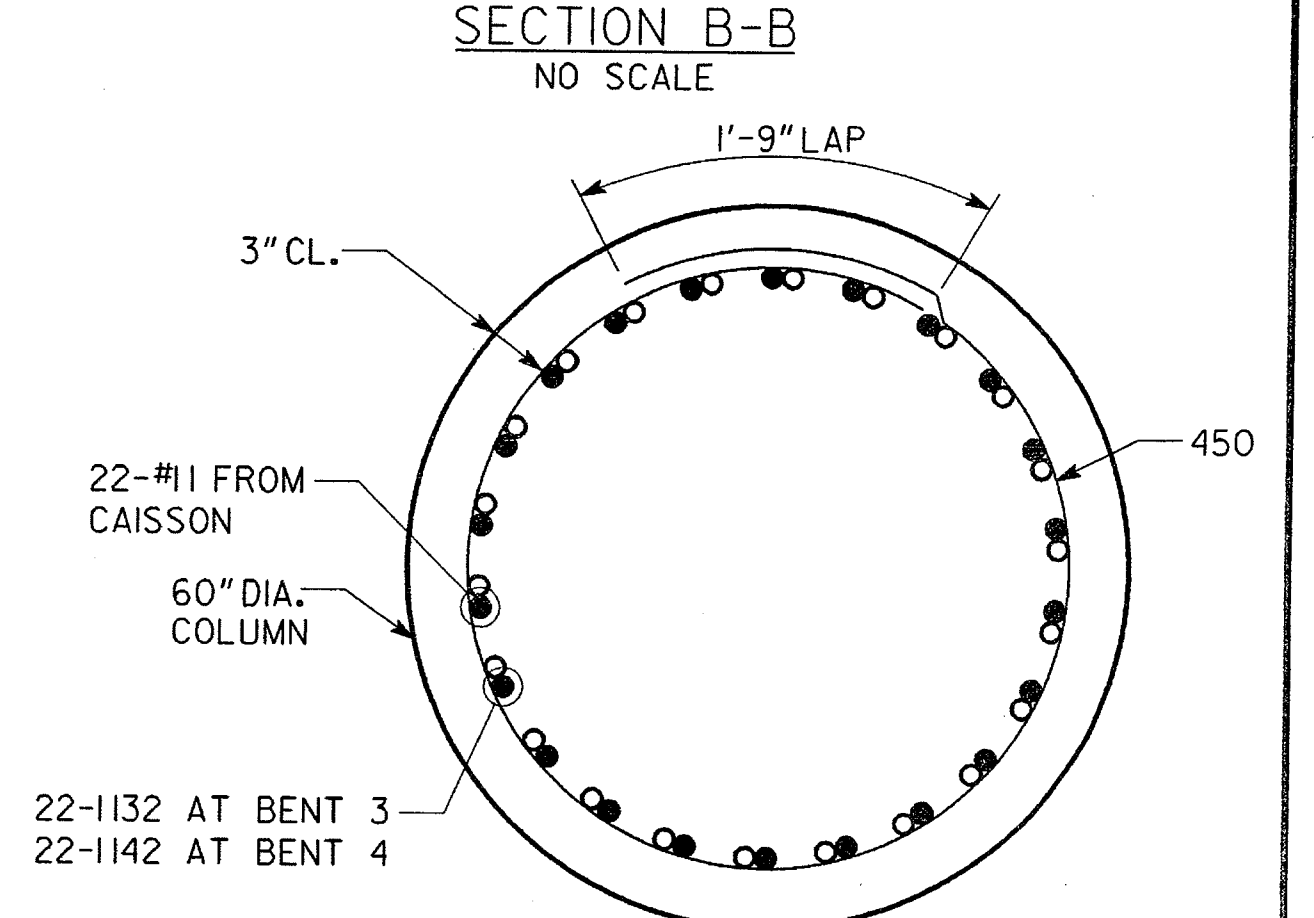
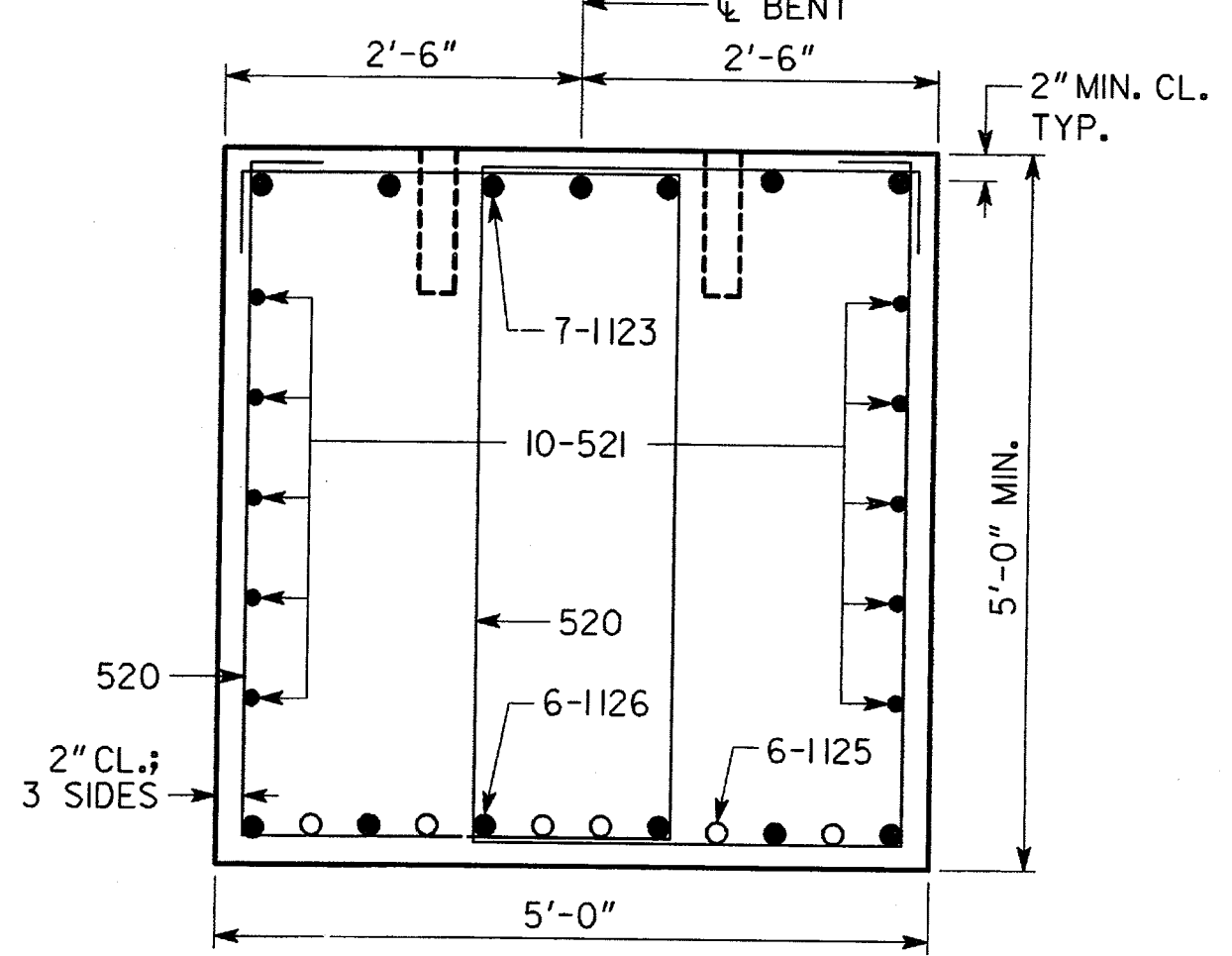
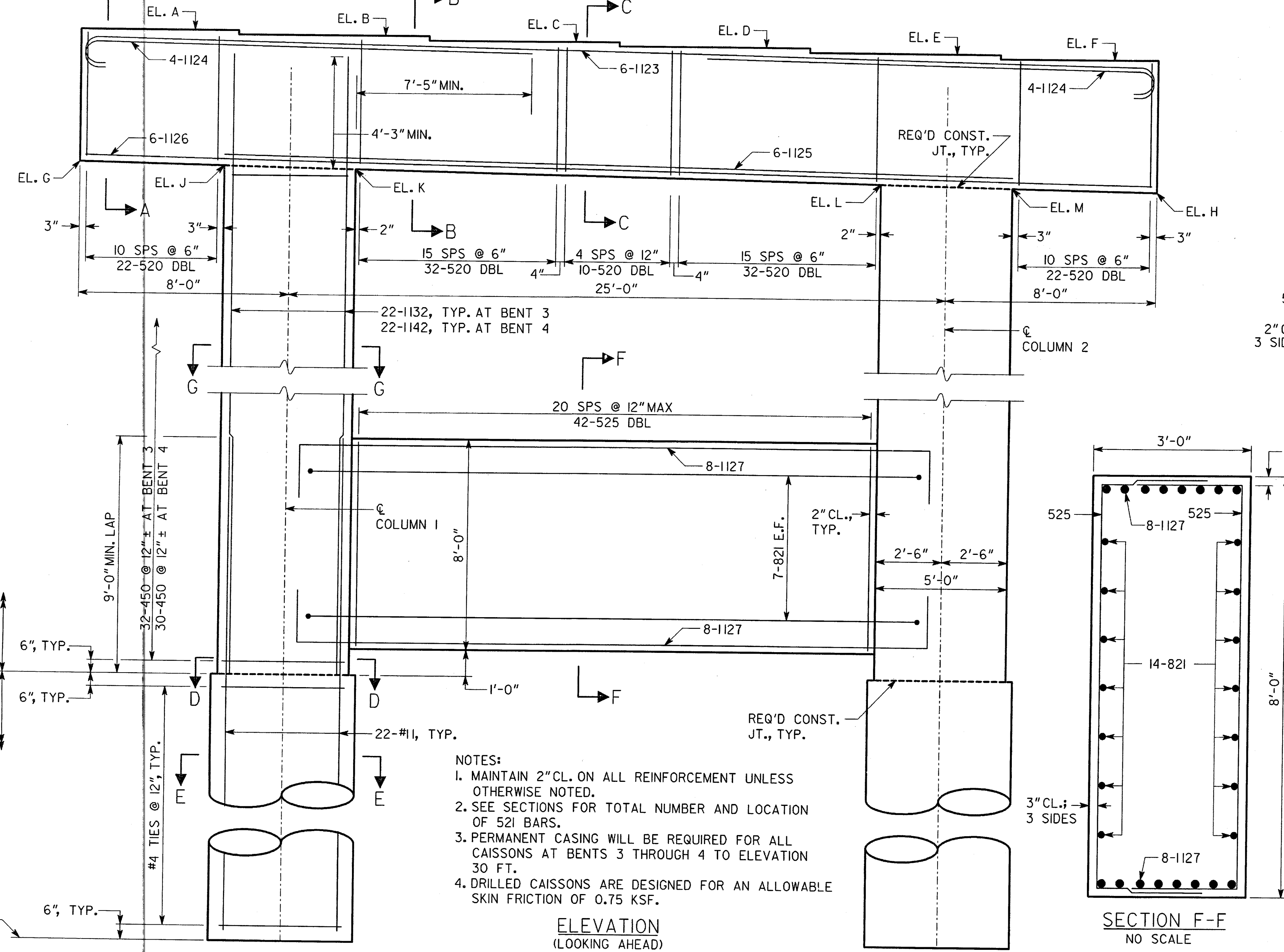
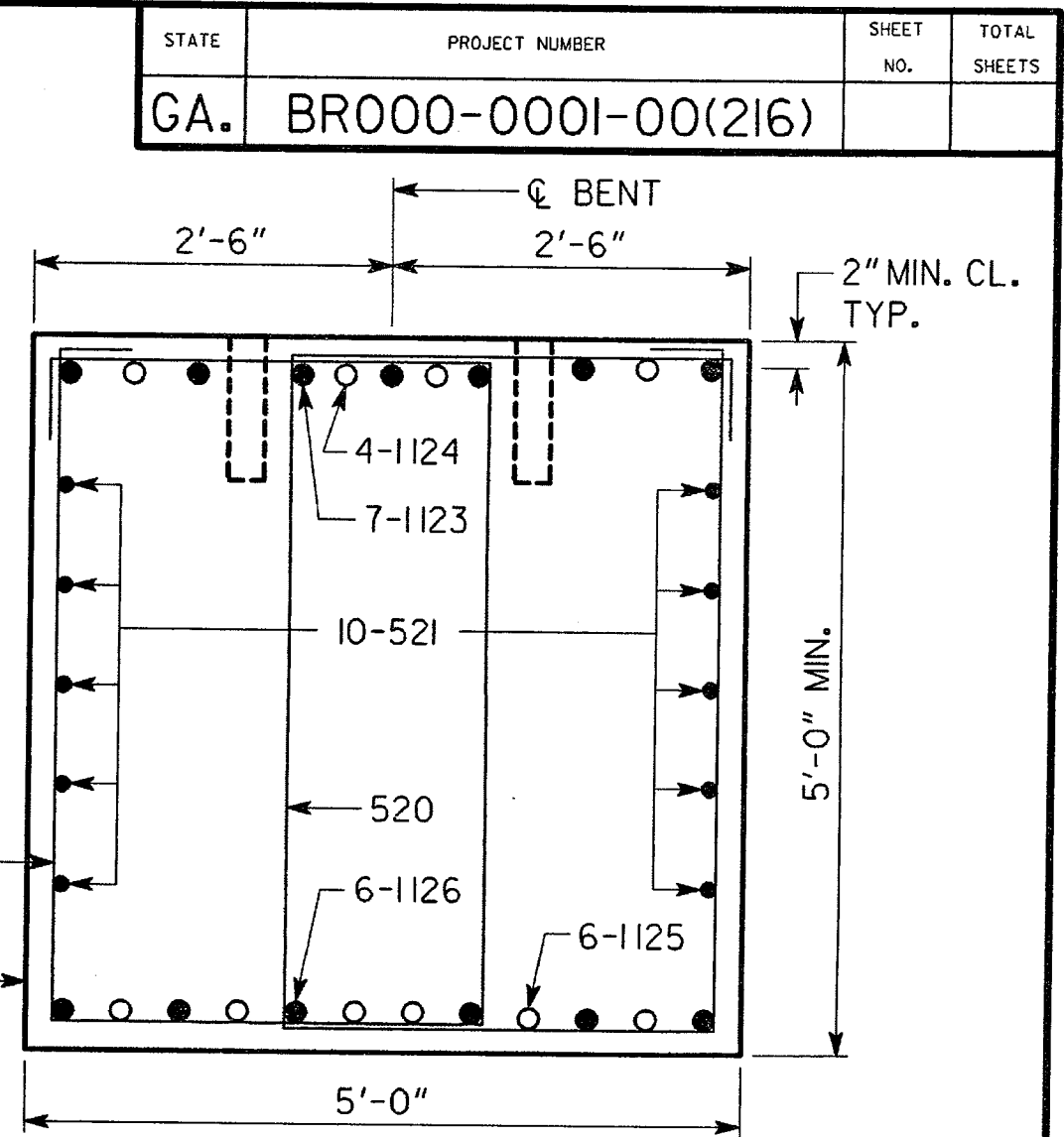
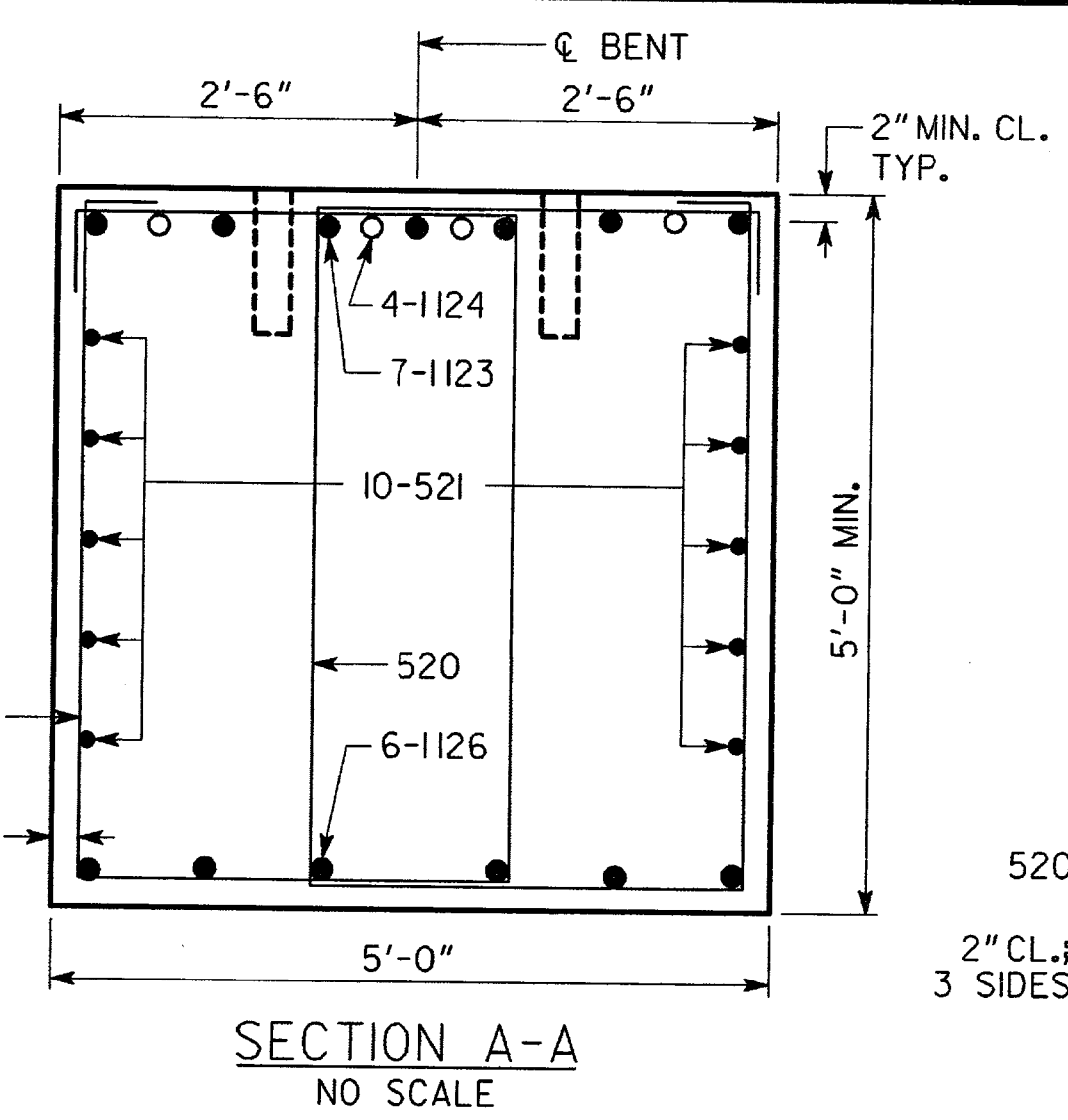


BENT STA.	
BENT 3	STA. 50+20.00
BENT 4	STA. 51+60.00



- NOTES:
1. MAINTAIN 2" CL. ON ALL REINFORCEMENT UNLESS OTHERWISE NOTED.
 2. SEE SECTIONS FOR TOTAL NUMBER AND LOCATION OF 521 BARS.
 3. PERMANENT CASING WILL BE REQUIRED FOR ALL CAISSONS AT BENTS 3 THROUGH 4 TO ELEVATION 30 FT.
 4. DRILLED CAISSONS ARE DESIGNED FOR AN ALLOWABLE SKIN FRICTION OF 0.75 KSF.

TABLE OF ELEVATIONS														
	A	B	C	D	E	F	G	H	J	K	L	M	N	P
BENT 3	107.95	107.81	107.66	107.52	107.37	107.23	102.92	102.10	102.81	102.71	102.31	102.21	71.2	-85.0
BENT 4	105.74	105.60	105.45	105.31	105.16	105.02	100.71	99.89	100.60	100.50	100.10	100.00	71.2	-85.0

SUBSTRUCTURE QUANTITIES		
ITEM	BENT 3	BENT 4
CY CLASS AA CONCRETE	101.9	98.7
LB BAR REINF STEEL	20231	19682

DRAWING NO. 35 - 018
BRIDGE SHEET 18 OF 31

DATE	REVISIONS

BRIDGE NO. 1

Heath & Lineback Engineers
INCORPORATED
2390 CANTON ROAD, BUILDING 200
MARIETTA, GEORGIA 30066-5393
(770)424-1668

GEORGIA
DEPARTMENT OF TRANSPORTATION
ENGINEERING DIVISION-OFFICE OF BRIDGES AND STRUCTURES

INTERMEDIATE BENTS 3-4 DETAILS
US 1/ SR 4/ SR 15
APPLING/TOOMBS COUNTIES BR000-0001-00(216)

SCALE: 3/8" = 1'-0"

JUNE 2013

DESIGNED: JRL/JJY/KAK	CHECKED: TBS/MS	REVIEWED: WMD/DLC
DRAWN: JJY	DESIGN GROUP: EJC	APPROVED: BFR

1 INCH WHEN PRINTED FULL SIZE