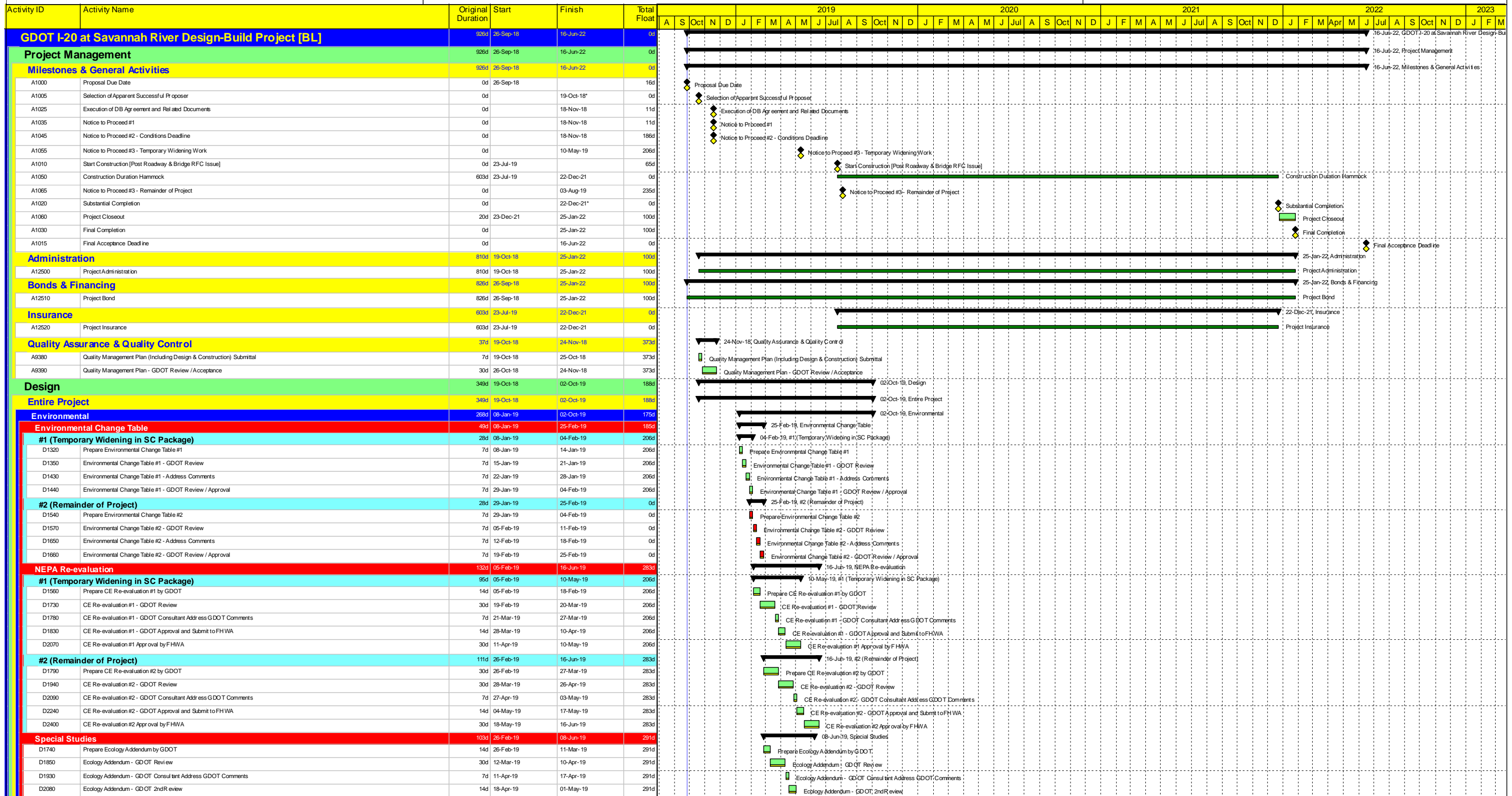


**GDOT I-20 at Savannah River Bridge Replacements & Roadway Widening Design-Build CPM Schedule**



■ Remaining Level of Effort    ■ Critical Remaining Work  
■ Primary Baseline    ◆ Baseline Milestone  
■ Actual Work    ◆ Milestone  
■ Remaining Work    ▶ Summary









Activity ID	Activity Name	Original Duration	Start	Finish	Total Float	2019																																				2020												2021												2022												2023																																																																																																																																																																																																																																																																																																																																																																																																																																																																																																																																																																																																																																																																																																																																																																																																																																																																																																																																																																																																																																																																																																																																																																																																																																																																																																																																																																																																																																																																																																																																																																																																																																																																																																																																																																																																																																																																																																																																																																																																																																																																																																																																																																																																																																																																																																																																																																																																																																																																																																																																																																																																																																																																																																																																																																																																																																																																																																																																																																																																																																																																																																																																																																																																																																																																																																																																																																																																																																																																																																																																																																																																																																																																																																																																																																																																																																																																																																																																																																																																																																																																																																																																																																																																																																																																																																																																																																																																																																																																																																																																																																																																																																																																																																																																																																																																																																																																																																																																																																																																																																																																																																																																																																																																																																																																																																																																																																																																																																																																																																																																																																																																																																																																																																																																																																																																																																																																																																																																																																																																																																																																																																																																																																																																																																																																																																																																																																																																																																																																																																																																																																																																																																																																																																																																																																																																																																																	
						A					S					O					N					D					J					F					M					A					M					J					J					A					S					O					N					D					J					F					M					A					M					J					J					A					S					O					N					D					J					F					M					A					M					J					J					A					S					O					N					D					J					F					M					A					M					J					J					A					S					O					N					D					J					F					M					A					M					J					J					A					S					O					N					D					J					F					M					A					M					J					J					A					S					O					N					D					J					F					M					A					M					J					J					A					S					O					N					D					J					F					M					A					M					J					J					A					S					O					N					D					J					F					M					A					M					J					J					A					S					O					N					D					J					F					M					A					M					J					J					A					S					O					N					D					J					F					M					A					M					J					J					A					S					O					N					D					J					F					M					A					M					J					J					A					S					O					N					D					J					F					M					A					M					J					J					A					S					O					N					D					J					F					M					A					M					J					J					A					S					O					N					D					J					F					M					A					M					J					J					A					S					O					N					D					J					F					M					A					M					J					J					A					S					O					N					D					J					F					M					A					M					J					J					A					S					O					N					D					J					F					M					A					M					J					J					A					S					O					N					D					J					F					M					A					M					J					J					A					S					O					N					D					J					F					M					A					M					J					J					A					S					O					N					D					J					F					M					A					M					J					J					A					S					O					N					D					J					F					M					A					M					J					J					A					S					O					N					D					J					F					M					A					M					J					J					A					S					O					N					D					J					F					M					A					M					J					J					A					S					O					N					D					J					F					M					A					M					J					J					A					S					O					N					D					J					F					M					A					M					J					J					A					S					O					N					D					J					F					M					A					M					J					J					A					S					O					N					D					J					F					M					A					M					J					J					A					S					O					N					D					J					F					M					A					M					J					J					A					S					O					N					D					J					F					M					A					M					J					J					A					S					O					N					D					J					F					M					A					M					J					J					A					S					O					N					D					J					F					M					A					M					J					J					A					S					O					N					D					J					F					M					A					M					J					J					A					S					O					N					D					J					F					M					A					M					J					J					A					S					O					N					D					J					F					M					A					M					J					J					A					S					O					N					D					J					F					M					A					M					J					J					A					S					O					N					D					J					F					M					A					M					J					J					A					S					O					N					D					J					F					M					A					M					J					J					A					S					O					N					D					J					F					M					A					M					J					J					A					S					O					N					D					J					F					M					A					M					J					J					A					S					O					N					D					J					F					M					A					M					J					J					A					S					O					N					D					J					F					M					A					M					J					J					A					S					O					N					D					J					F					M					A					M					J					J					A					S					O					N					D					J					F					M					A					M					J					J					A					S					O					N					D					J					F					M					A					M					J					J					A					S					O					N					D					J					F					M					A					M					J					J					A					S					O					N					D					J					F					M					A					M					J					J					A					S					O					N					D					J					F					M					A					M					J					J					A					S					O					N					D					J					F					M					A					M					J					J					A					S					O					N					D					J					F					M					A					M					J					J					A					S					O					N					D					J					F					M					A					M					J					J					A					S					O					N					D					J					F					M					A					M					J					J					A					S					O					N					D					J					F					M					A					M					J					J					A					S					O					N					D					J					F					M					A					M					J					J					A					S					O					N					D					J					F					M					A					M					J					J					A					S					O					N					D					J					F					M					A					M					J					J					A					S					O					N					D					J					F					M					A					M					J					J					A					S					O					N					D					J					F					M					A					M					J					J					A					S					O					N					D					J					F					M					A					M					J					J					A					S					O					N					D					J					F					M					A					M					J					J					A					S					O					N					D					J					F					M					A					M					J					J					A					S					O					N					D					J					F					M					A					M					J					J					A					S					O					N					D					J					F					M					A					M					J					J					A					S					O					N					D					J					F					M					A					M					J					J					A					S					O					N					D					J					F					M					A					M					J					J					A					S					O					N					D					J					F					M					A					M					J					J					A					S					O					N					D					J					F					M					A					M					J					J					A					S					O					N					D					J					F					M					A					M					J					J					A					S					O					N					D					J					F					M					A					M					J					J					A					S					O					N					D					J					F					M					A					M					J					J					A					S					O					N					D					J					F					M					A					M					J					J					A					S					O					N					D					J					F					M					A					M					J					J					A					S					O					N					D					J					F					M					A					M					J					J					A					S					O					N					D					J					F					M					A					M					J					J					A					S					O					N					D					J					F					M					A					M					J					J					A					S					O					N					D					J					F					M					A					M					J					J					A					S					O					N					D					J					F					M					A					M					J					J					A					S					O					N					D					J					F					M					A					M					J					J					A					S					O					N					D					J					F					M					A					M					J					J					A					S					O					N					D					J					F					M					A					M					J					J					A					S					O					N					D					J					F					M					A					M					J					J					A					S					O					N					D					J					F					M					A					M					J					J					A					S					O					N					D					J					F					M					A					M					J					J					A					S					O					N					D					J					F					M					A					M					J					J					A					S					O					N					D					J					F					M					A					M					J					J					A					S					O					N					D					J					F					M					A					M					J					J					A					S					O					N					D					J					F					M					A					M					J					J					A					S					O					N					D					J					F					M					A					M					J					J					A					S					O					N					D					J					F					M					A					M					J					J					A					S					O					N					D					J					F					M					A					M					J					J					A					S					O					N					D					J					F					M					A					M					J					J					A					S					O					N					D					J					F					M					A					M					J					J					A					S					O					N					D					J					F					M					A					M					J					J					A					S					O					N					D					J					F					M					A					M					J					J					A					S					O					N					D					J					F					M					A					M					J					J					A					S					O					N					D					J					F					M					A					M					J					J					A					S					O					N					D					J					F					M					A					M					J					J					A					S					O					N					D					J					F					M					A					M					J					J					A					S					O					N					D					J					F					M					A					M					J					J					A					S					O					N					D					J					F					M					A					M					J					J					A					S					O					N					D					J					F					M					A					M					J					J					A					S					O					N					D					J					F					M					A					M					J					J					A					S					O					N					D					J					F					M					A					M					J					J					A					S					O					N					D					J					F					M					A					M					J					J					A					S					O					N					D					J					F					M					A					M					J					J					A					S					O					N					D					J					F					M					A					M					J					J					A					S					O					N					D					J					F					M					A					M					J					J					A					S					O					N					D					J					F					M					A					M					J					J					A					S					O					N					D					J					F					M					A					M					J					J					A					S					O					N					D					J					F					M					A					M					J					J					A					S					O					N					D					J					F					M					A					M				

**GDOT I-20 at Savannah River Bridge Replacements & Roadway Widening Design-Build CPM Schedule**

Activity ID	Activity Name	Original Duration	Start	Finish	Total Float	2019							2020							2021							2022							2023													
						A	S	Oct	N	D	J	F	M	A	M	J	Jul	A	S	Oct	N	D	J	F	M	A	M	J	Jul	A	S	Oct	N	D	J	F	M	A	M	J	Jul	A	S	Oct	N	D	J
<b>Georgia (GDOT)</b>						22-Dec-21, Georgia (GDOT)																																									
<b>General Activities [GA]</b>						22-Dec-21, General Activities [GA]																																									
A1910	Start Construction [GA]	603d	23-Jul-19	22-Dec-21	0d	Start Construction [GA]																																									
A1930	Construction Duration [GA]	603d	23-Jul-19	22-Dec-21	0d	Construction Duration [GA]																																									
A4740	Stage 1 Complete [GA]	0d		11-Jun-20	0d	Stage 1 Complete [GA]																																									
A4750	Stage 2 Complete [GA]	0d		11-Mar-21	0d	Stage 2 Complete [GA]																																									
A4320	Bridge 1 over Augusta Canal Complete [GA]	0d		03-Sep-21	62d	Bridge 1 over Augusta Canal Complete [GA]																																									
A4330	Bridge 2 over Savannah River Complete [GA]	0d		07-Dec-21	11d	Bridge 2 over Savannah River Complete [GA]																																									
A4760	Stage 3 Complete [GA]	0d		07-Dec-21	0d	Stage 3 Complete [GA]																																									
A1920	Substantial Completion [GA]	0d		22-Dec-21	0d	Substantial Completion [GA]																																									
<b>Mobilization [GA]</b>						26-Jul-19, Mobilization [GA]																																									
A2820	Mobilization #1 [GA]	4d	23-Jul-19	26-Jul-19	270d	Mobilization #1 [GA]																																									
A2840	Sub-Contractor Mobilization #1 [GA]	2d	23-Jul-19	24-Jul-19	46d	Sub-Contractor Mobilization #1 [GA]																																									
A2830	Mobilization #2 [GA]	2d	25-Jul-19	26-Jul-19	270d	Mobilization #2 [GA]																																									
A2850	Sub-Contractor Mobilization #2 [GA]	2d	25-Jul-19	26-Jul-19	270d	Sub-Contractor Mobilization #2 [GA]																																									
<b>Traffic Control &amp; Stage Transition 1-4 [GA]</b>						22-Dec-21, Traffic Control & Stage Transition 1-4 [GA]																																									
A4800	Set Temporary Barriers on Inside Lanes - Sta.343+25.17 to Sta.366+85.00 [GA]	1d	23-Jul-19	23-Jul-19	155d	Set Temporary Barriers on Inside Lanes - Sta.343+25.17 to Sta.366+85.00 [GA]																																									
A4790	Switch Traffic to EB & WB Outside Lanes [GA]	0d	24-Jul-19		155d	Switch Traffic to EB & WB Outside Lanes [GA]																																									
A5350	Stage 1 Traffic Route [GA]	221d	24-Jul-19	11-Jun-20	0d	Stage 1 Traffic Route [GA]																																									
A4830	Set Temporary Barriers on Eastbound Lanes - Sta.343+25.17 to Sta.366+85.00 [GA]	1d	12-Jun-20	12-Jun-20	0d	Set Temporary Barriers on Eastbound Lanes - Sta.343+25.17 to Sta.366+85.00 [GA]																																									
A4810	Switch Traffic from EB to Inside Lanes [GA]	0d	15-Jun-20		0d	Switch Traffic from EB to Inside Lanes [GA]																																									
A5360	Stage 2 Traffic Route [GA]	184d	15-Jun-20	11-Mar-21	0d	Stage 2 Traffic Route [GA]																																									
A4840	Set Temporary Barriers on Westbound Lanes - Sta.343+25.17 to Sta.366+85.00 [GA]	1d	12-Mar-21	12-Mar-21	0d	Set Temporary Barriers on Westbound Lanes - Sta.343+25.17 to Sta.366+85.00 [GA]																																									
A4820	Switch Traffic from WB to Inside Lanes [GA]	0d	15-Mar-21		0d	Switch Traffic from WB to Inside Lanes [GA]																																									
A5370	Stage 3 Traffic Route [GA]	184d	15-Mar-21	07-Dec-21	0d	Stage 3 Traffic Route [GA]																																									
A4980	Set Temporary Barriers on Inside Shoulders - Sta.343+25.17 to Sta.366+85.00 [GA]	1d	08-Dec-21	08-Dec-21	0d	Set Temporary Barriers on Inside Shoulders - Sta.343+25.17 to Sta.366+85.00 [GA]																																									
A4990	Switch Traffic from Inside Lanes to Outside Lanes [GA]	0d	09-Dec-21		0d	Switch Traffic from Inside Lanes to Outside Lanes [GA]																																									
A5380	Stage 4 Traffic Route [GA]	10d	09-Dec-21	22-Dec-21	0d	Stage 4 Traffic Route [GA]																																									
<b>Utility Relocation [GA]</b>						30-Sep-19, Utility Relocation [GA]																																									
A4310	Relocate ITS Camera Pole & Equipment at Sta.344+00.00 [GA]	45d	29-Jul-19	30-Sep-19	173d	Relocate ITS Camera Pole & Equipment at Sta.344+00.00 [GA]																																									
A4315	Relocate ITS Camera Pole & Equipment at Sta.367+00.00 [GA]	45d	29-Jul-19	30-Sep-19	173d	Relocate ITS Camera Pole & Equipment at Sta.367+00.00 [GA]																																									
<b>Roadway - Sta.343+25.17 to Sta.366+85.00 [GA]</b>						07-Oct-21, Roadway - Sta.343+25.17 to Sta.366+85.00 [GA]																																									
<b>Stage 1 - Inside Widening [GA]</b>						04-Nov-19, Stage 1 - Inside Widening [GA]																																									
<b>Inside Lanes [GA]</b>						04-Nov-19, Inside Lanes [GA]																																									
<b>Median Lanes - Sta.343+25.17 to Sta.351+20.00 [GA]</b>						17-Oct-19, Median Lanes - Sta.343+25.17 to Sta.351+20.00 [GA]																																									
<b>Grading &amp; Drainage and Prep</b>						17-Oct-19, Grading & Drainage and Prep																																									
A1110	Erosion Control - Sta.343+25.17 to Sta.351+20.00 IW [GA]	61d	23-Jul-19	17-Oct-19	156d	Erosion Control - Sta.343+25.17 to Sta.351+20.00 IW [GA]																																									
A1290	Remove Existing Guardrail - Sta.343+25.17 to Sta.351+20.00 IW [GA]	5d	25-Jul-19	31-Jul-19	156d	Remove Existing Guardrail - Sta.343+25.17 to Sta.351+20.00 IW [GA]																																									
A4940	Clearing & Grubbing - Sta.343+25.17 to Sta.351+20.00 IW [GA]	5d	25-Jul-19	31-Jul-19	112d	Clearing & Grubbing - Sta.343+25.17 to Sta.351+20.00 IW [GA]																																									
A1300	Remove Existing Pavement - Sta.343+25.17 to Sta.351+20.00 IW [GA]	5d	01-Aug-19	07-Aug-19	156d	Remove Existing Pavement - Sta.343+25.17 to Sta.351+20.00 IW [GA]																																									
A4540	Cut to Fill Existing Median - Sta.343+25.17 to Sta.351+20.00 IW [GA]	5d	01-Aug-19	07-Aug-19	156d	Cut to Fill Existing Median - Sta.343+25.17 to Sta.351+20.00 IW [GA]																																									
A4340	Grading & Drainage - Sta.343+25.17 to Sta.351+20.00 IW [GA]	8d	08-Aug-19	19-Aug-19	156d	Grading & Drainage - Sta.343+25.17 to Sta.351+20.00 IW [GA]																																									
<b>Pavement</b>						01-Oct-19, Pavement																																									
A4350	Fine Grading - Sta.343+25.17 to Sta.351+20.00 IW [GA]	30d	20-Aug-19	01-Oct-19	156d	Fine Grading - Sta.343+25.17 to Sta.351+20.00 IW [GA]																																									
A4360	Aggregate Base Course - Sta.343+25.17 to Sta.351+20.00 IW [GA]	2d	20-Aug-19	21-Aug-19	156d	Aggregate Base Course - Sta.343+25.17 to Sta.351+20.00 IW [GA]																																									
A4370	Asphalt Base - Sta.343+25.17 to Sta.351+20.00 IW [GA]	8d	27-Aug-19	06-Sep-19	156d	Asphalt Base - Sta.343+25.17 to Sta.351+20.00 IW [GA]																																									
A4380	Intermediate Base - Sta.343+25.17 to Sta.351+20.00 IW [GA]	10d	04-Sep-19	17-Sep-19	85d	Intermediate Base - Sta.343+25.17 to Sta.351+20.00 IW [GA]																																									
A4390	Asphalt Paving - Sta.343+25.17 to Sta.351+20.00 IW [GA]	10d	11-Sep-19	24-Sep-19	85d	Asphalt Paving - Sta.343+25.17 to Sta.351+20.00 IW [GA]																																									
A4390	Asphalt Paving - Sta.343+25.17 to Sta.351+20.00 IW [GA]	5d	18-Sep-19	24-Sep-19	85d	Asphalt Paving - Sta.343+25.17 to Sta.351+20.00 IW [GA]																																									
A12670	Inside Shoulder Paving - Sta.343+25.17 to Sta.351+20.00 IW [GA]	5d	25-Sep-19	01-Oct-19	85d	Inside Shoulder Paving - Sta.343+25.17 to Sta.351+20.00 IW [GA]																																									
<b>Appurtenances</b>						17-Oct-19, Appurtenances																																									
A12530	Dress Inside Shoulder - Sta.343+25.17 to Sta.351+20.00 IW [GA]	11d	02-Oct-19	17-Oct-19	156d	Dress Inside Shoulder - Sta.343+25.17 to Sta.351+20.00 IW [GA]																																									
A4400	Mill-In Rumble Strips - Sta.343+25.17 to Sta.351+20.00 IW [GA]	2d	02-Oct-19	03-Oct-19	156d	Mill-In Rumble Strips - Sta.343+25.17 to Sta.351+20.00 IW [GA]																																									
A4420	Road Markings - Sta.343+25.17 to Sta.351+20.00 IW [GA]	2d	04-Oct-19	07-Oct-19	156d	Road Markings - Sta.343+25.17 to Sta.351+20.00 IW [GA]																																									
A4430	Install Signage - Sta.343+25.17 to Sta.351+20.00 IW [GA]	2d	08-Oct-19	09-Oct-19	156d	Install Signage - Sta.343+25.17 to Sta.351+20.00 IW [GA]																																									
A4430	Install Signage - Sta.343+25.17 to Sta.351+20.00 IW [GA]	5d	10-Oct-19	17-Oct-19	156d	Install Signage - Sta.343+25.17 to Sta.351+20.00 IW [GA]																																									
<b>Median Lanes - Sta.355+10.00 to Sta.366+85.00 [GA]</b>						04-Nov-19, Median Lanes - Sta.355+10.00 to Sta.366+85.00 [GA]																																									
<b>Grading &amp; Drainage and Prep</b>						04-Nov-19, Grading & Drainage and Prep																																									
A2020	Erosion Control - Sta.355+10.00 to Sta.366+85.00 IW [GA]	73d	23-Jul-19	04-Nov-19	149d	Erosion Control - Sta.355+10.00 to Sta.366+85.00 IW [GA]																																									
A2000	Remove Existing Guardrail - Sta.355+10.00 to Sta.366+85.00 IW [GA]	73d	23-Jul-19	04-Nov-19	149d	Remove Existing Guardrail - Sta.355+10.00 to Sta.366+85.00 IW [GA]																																									
A4950	Clearing & Grubbing - Sta.355+10.00 to Sta.366+85.00 IW [GA]	5d	25-Jul-19	31-Jul-19	154d	Clearing & Grubbing - Sta.355+10.00 to Sta.366+85.00 IW [GA]																																									

▬ Remaining Level of Effort    ▬ Critical Remaining Work  
▬ Primary Baseline            ◆ Baseline Milestone  
▬ Actual Work                        ◆ Milestone  
▬ Remaining Work                  ▬ Summary

































