



GEORGIA DEPARTMENT OF TRANSPORTATION

BRIDGE DESIGN PC PROGRAMS  
USERS GUIDE

OFFICE OF BRIDGE  
AND STRUCTURAL DESIGN

PAUL V. LILES, JR., P.E.  
STATE BRIDGE DESIGN ENGINEER

DECEMBER 2008

# INTERACTION WITH BRIDGE DESIGN PC PROGRAMS

## Table of Contents

<i>DOWNLOADING/INSTALLING BRIDGE DESIGN PC PROGRAMS</i> .....	3
<i>ADDING SHORTCUT ACCESS FOR BRIDGE DESIGN PC PROGRAMS</i> .....	5
<i>ADDING SHORTCUT FOR GATRANS PC PROGRAM</i> .....	6
<i>CREATING AND EDITING INPUT FILES</i> .....	6
<i>WORKING WITH SHORTCUT ACCESS FOR BRIDGE DESIGN PC PROGRAMS</i> .....	7
<i>BRLASER FOR BRIDGE DESIGN PC PROGRAMS</i> .....	8
<i>GATRANS PC PROGRAM</i> .....	9
<i>USEFUL COMMANDS FOR DOS</i> .....	9
<i>MISCELLANEOUS INFORMATION/FAQ</i> .....	10

## INTERACTION WITH BRIDGE DESIGN PC PROGRAMS

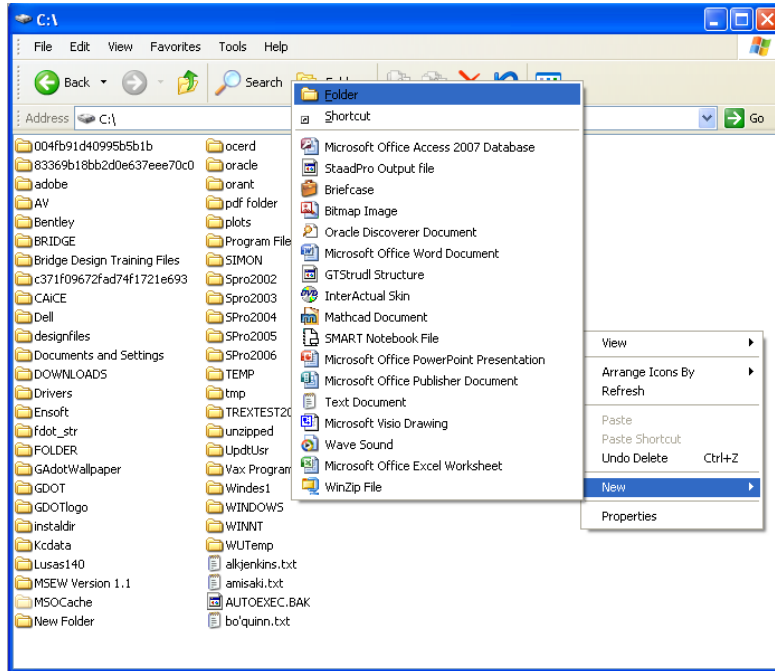
### DOWNLOADING/INSTALLING BRIDGE DESIGN PC PROGRAMS

*NOTE: By placing the gdot\_bridge\_programs in the C drive of the computer, it allows access to the programs by anyone who accesses the computer. When placed in the My Documents folder, only the person who placed the folder can access the programs.*

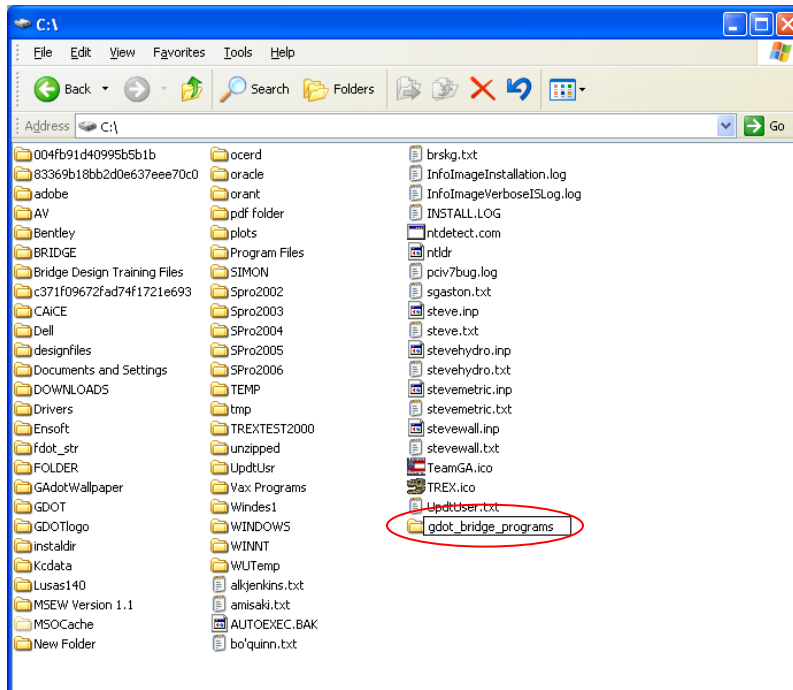
1. Create folder under C:\ named *gdot\_bridge\_programs*.

NOTE: If this folder already exists, remove any existing input files and delete it.

- a. *Right-click* off to the side of the C:\ drive. **Select New => Folder**



- b. Type *gdot\_bridge\_programs*. Then press **Enter**.

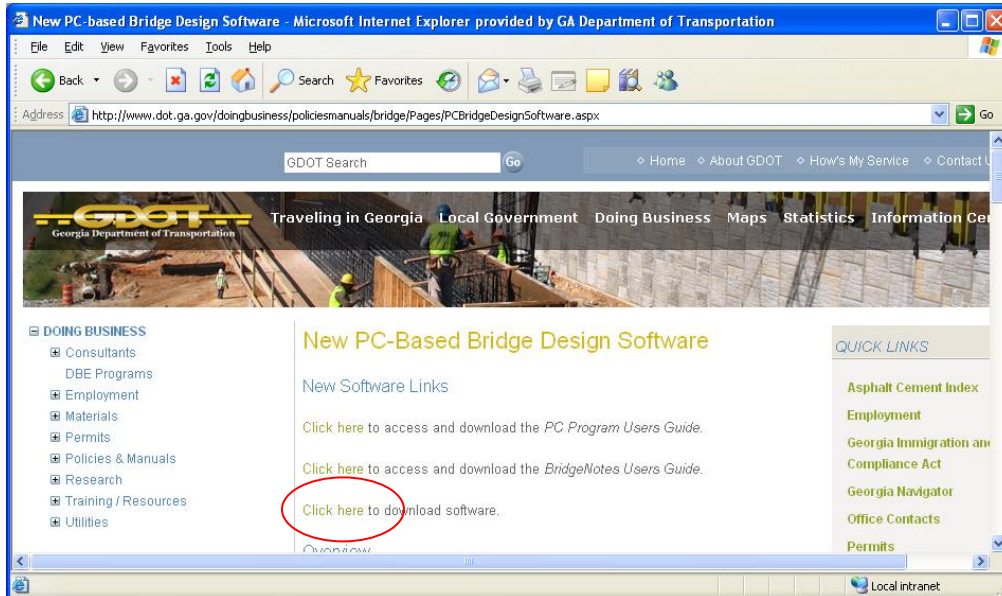


## INTERACTION WITH BRIDGE DESIGN PC PROGRAMS

2. Go to Website:

<http://www.dot.ga.gov/doingbusiness/policiesmanuals/bridge/Pages/PCBridgeDesignSoftware.aspx>

3. Click on “Click here” to download software:



4. The following window will pop-up:

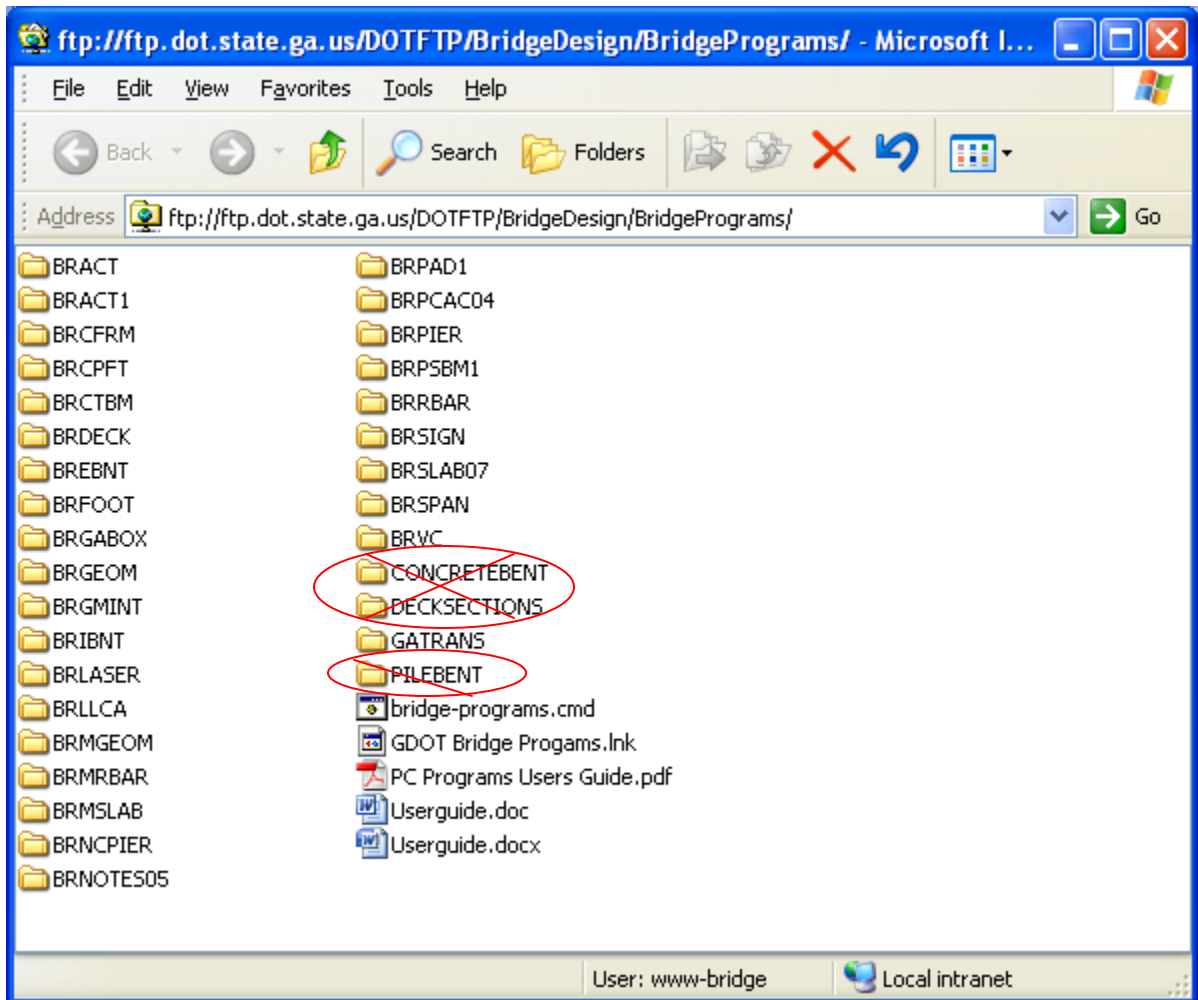


NOTE: If User name and Password for ftp log on is unknown, contact an Assistant State Bridge Engineer at 404-631-1985.

Enter User name and Password and *Click Log On*

## INTERACTION WITH BRIDGE DESIGN PC PROGRAMS

5. Select all the folders and files in the ftp location except CONCRETEBENT, DECKSECTIONS and PILEBENT and copy to the [C:\gdot\\_bridge\\_programs](C:\gdot_bridge_programs) folder.



### **ADDING SHORTCUT ACCESS FOR BRIDGE DESIGN PC PROGRAMS**

*NOTE: This shortcut allows the user to:*

- 1) *Have a single point of access for all the Bridge Design PC Programs*
  - 2) *To store input/output files in another location than where the PC programs are stored.*
1. Move GDOT Bridge Programs.Ink to Desktop
    - a. Go to [C:\gdot\\_bridge\\_programs](C:\gdot_bridge_programs)
    - b. *Right-click* onto GDOT Bridge Programs (or GDOT Bridge Programs.Ink) and *Select Cut.*
    - c. Go to C:\Documents and Settings\All Users\Desktop (no hyperlink)
    - d. *Right-click* and *Select Paste.*

## INTERACTION WITH BRIDGE DESIGN PC PROGRAMS

### ADDING SHORTCUT FOR GATRANS PC PROGRAM

1. Go to [C:\gdot\\_bridge\\_programs\GATRANS](C:\gdot_bridge_programs\GATRANS)
2. *Select* **windeck.ini, gatrans.bat, gatrans.ma**
3. *Right-click* on the selected files and *Select* **Copy**.
4. Go to <C:\GDOT\BRIDGE\Graphics\translator>. If this folder doesn't exist, create it first.
5. *Right-click* in the translator folder and *Select* **Paste**.
6. Go to [C:\gdot\\_bridge\\_programs\GATRANS](C:\gdot_bridge_programs\GATRANS)
7. *Right-click* onto gatrans.bat and *Select* **Cut**.
8. Go to C:\Documents and Settings\All Users\Desktop (no hyperlink)
9. *Right-click* and *Select* **Paste**.

### CREATING AND EDITING INPUT FILES

Use Notepad for creating and editing input files. Use the following settings in Notepad:

- **Font Options**  
Select Format from the top Menu then Select Font.  
Font: Arial Terminal or Courier  
Font Style: Regular  
Size: 8
- **Deactivate Word Wrap**  
Select Format from the top Menu  
Click Word Wrap to activate or deactivate (if checked it is activated, no check is deactivated)
- **Activate Status Bar**  
Select View from top Menu  
Click Status Bar to activate or deactivate (same as Word Wrap)

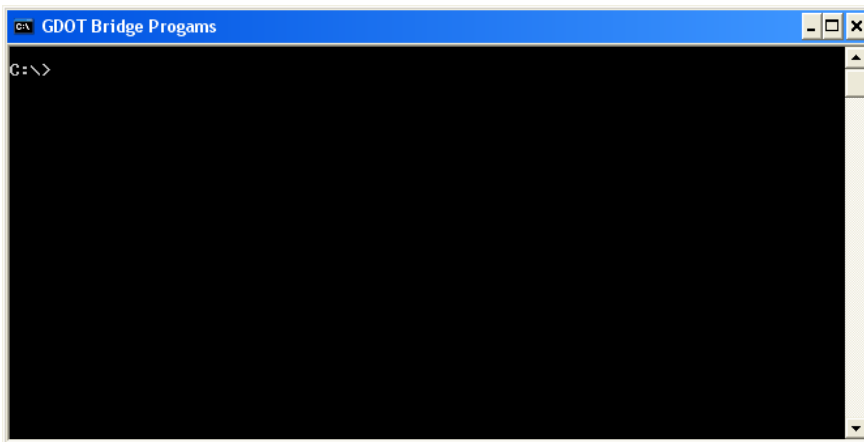
Input files for the PC Programs are a fixed format file. Therefore, the data will need to be entered into specific locations (line and column) in the input file. Input forms, located in the folder of the program, detail where data needs to be placed in the input file. Line and column information in Notepad can be found in the bottom right corner of the status bar (located at bottom of Notepad Window).

Use capital letters for any text in the input file and use the space bar to insert any blank spaces in the input file. The FORTRAN code used as the base of the PC Programs won't recognize lowercase letter nor will it recognize a space put in using the Tab key.

## INTERACTION WITH BRIDGE DESIGN PC PROGRAMS

### WORKING WITH SHORTCUT ACCESS FOR BRIDGE DESIGN PC PROGRAMS

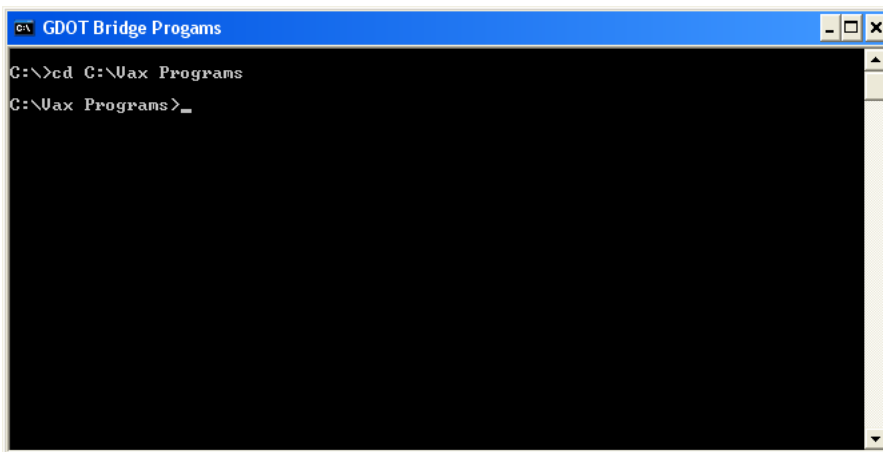
1. Double Click on **GDOT Bridge Program** shortcut on Desktop.



```
GDOT Bridge Programs
C:\>
```

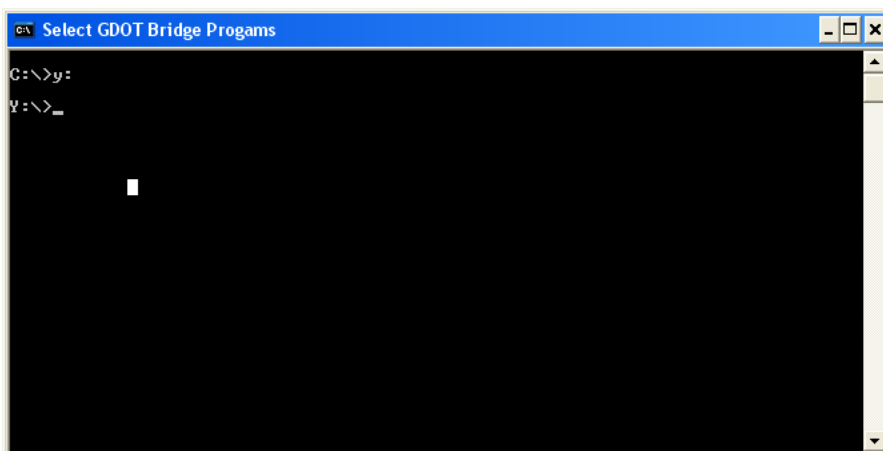
2. Going to the location of the input file.

- a. To change to a different folder, Type **cd** then the path to the input file then press **Enter**.



```
GDOT Bridge Programs
C:\>cd C:\Uax Programs
C:\Uax Programs>_
```

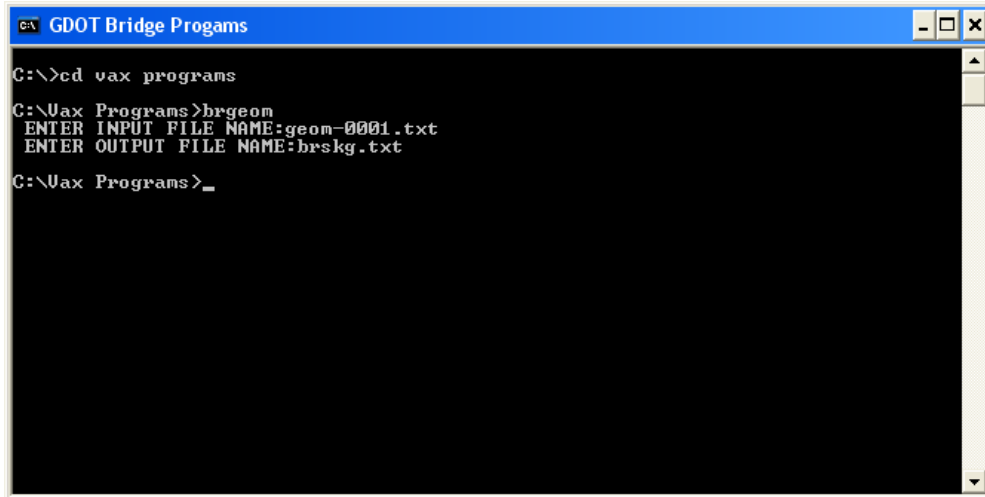
- b. To change to a different drive, type the name of drive with a colon and press **Enter**.



```
Select GDOT Bridge Programs
C:\>y:
Y:\>_
```

## INTERACTION WITH BRIDGE DESIGN PC PROGRAMS

3. To run a Bridge Program, just type the name of the program and press Enter.



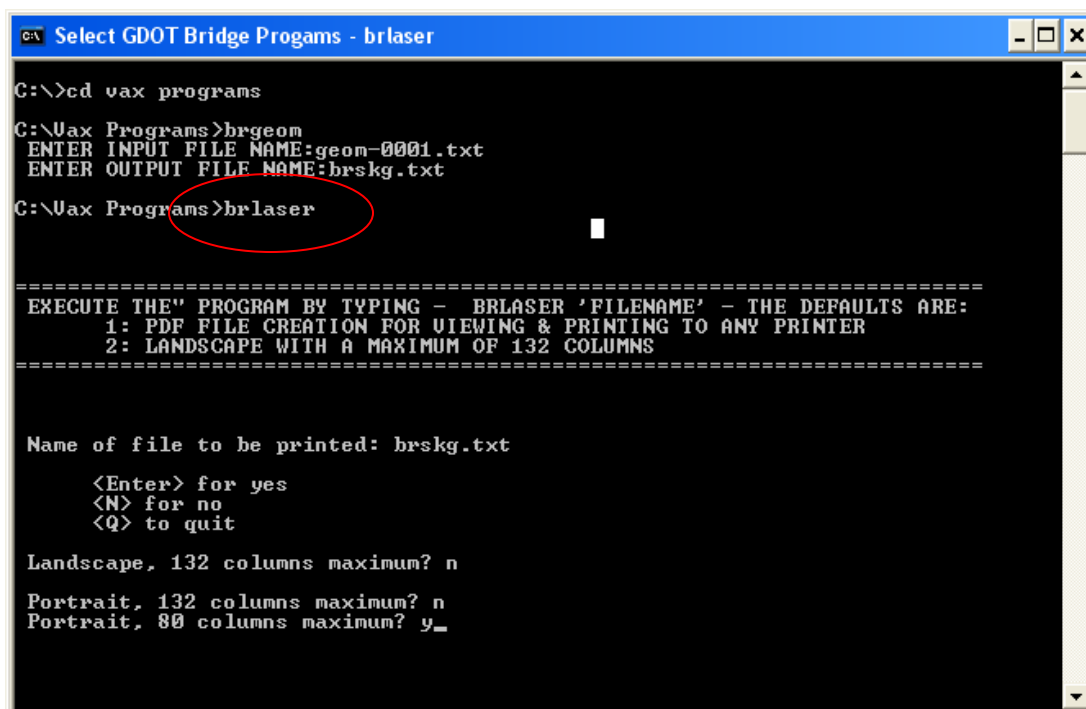
```
C:\>cd vax programs
C:\Uax Programs>brgeom
ENTER INPUT FILE NAME:geom-0001.txt
ENTER OUTPUT FILE NAME:brskg.txt
C:\Uax Programs>_
```

When prompted, enter the input file name and the desired output file name. The output file is placed in the same location as the input file.

NOTE: If the output file already exists, it will prompt you if you wish to replace the existing file. Type “y” and press **Enter** if you wish to replace the existing file, Type “n” and press **Enter** if you don’t. If you don’t replace the existing file, the new output file will be lost.

### **BRLASER FOR BRIDGE DESIGN PC PROGRAMS**

This command will place the output file (after it is created) into a PDF file that is formatted with page breaks similar to the old BRLASER command on the Alpha Server/VAX. The PDF file (always named OT.PDF) opens automatically once the program is run.



```
C:\>cd vax programs
C:\Uax Programs>brgeom
ENTER INPUT FILE NAME:geom-0001.txt
ENTER OUTPUT FILE NAME:brskg.txt
C:\Uax Programs>brlaser

=====
EXECUTE THE" PROGRAM BY TYPING - BRLASER 'FILENAME' - THE DEFAULTS ARE:
  1: PDF FILE CREATION FOR VIEWING & PRINTING TO ANY PRINTER
  2: LANDSCAPE WITH A MAXIMUM OF 132 COLUMNS
=====

Name of file to be printed: brskg.txt

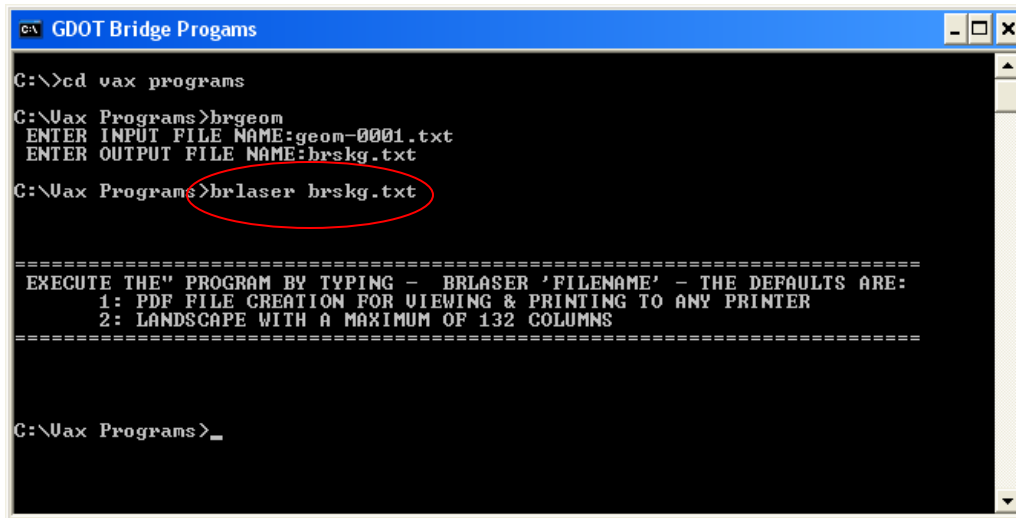
    <Enter> for yes
    <N> for no
    <Q> to quit

Landscape, 132 columns maximum? n
Portrait, 132 columns maximum? n
Portrait, 80 columns maximum? y_
```



## INTERACTION WITH BRIDGE DESIGN PC PROGRAMS

Or typing BRLASER with the filename will create the pdf file in the default Landscape 132.



```
C:\ GDOT Bridge Programs
C:\>cd vax programs
C:\Uax Programs>brgeom
ENTER INPUT FILE NAME:geom-0001.txt
ENTER OUTPUT FILE NAME:brskg.txt
C:\Uax Programs>brlaser brskg.txt

=====
EXECUTE THE PROGRAM BY TYPING - BRLASER 'FILENAME' - THE DEFAULTS ARE:
1: PDF FILE CREATION FOR VIEWING & PRINTING TO ANY PRINTER
2: LANDSCAPE WITH A MAXIMUM OF 132 COLUMNS
=====

C:\Uax Programs>_
```

### GATRANS PC PROGRAM

To use the GATRANS shortcut to convert a .sif file to a .dgn file just do the following steps:

1. Left-click (and hold) on the .sif file and drag it on top of the shortcut
2. Let go of the left button.

The program will automatically start to work and the resultant .dgn file will appear in the same location where the .sif file is located.

### **PROGRAM NOTES:**

- The input file is case sensitive. If the extension is .SIF instead of .sif, the translator will not work.
- If the incorrect file type is used, the program will display an error message stating that GATRANS can only be run with no extension, and .sif extension or a .dgn extension. This is not correct. Only files with an .sif extension can be used.

### USEFUL COMMANDS FOR DOS

- |                  |  |
|------------------|--|
| C:\>cd temp      | changes directory from C:\ to C:\temp  |
| C:\>cd..         | moves the active directory up one folder   |
| C:\>luke.txt     | opens file called luke.txt in Notepad (or default program for that type of file) |
| C:\>del luke.txt | deletes file called luke.txt   |
| C:\>dir          | Directory listing of files and subdirectories in current directory               |
| C:\>X:           | Changes from C: Drive to X: Drive (Usually BRCommon for Bridge Office)           |

## INTERACTION WITH BRIDGE DESIGN PC PROGRAMS

### MISCELLANEOUS INFORMATION/FAQ

- For information on individual design programs, consult the user manual for the specific program. (Most user manuals are located as PDF files in C:\gdot\_bridge\_programs in the folder with the same name as the program)
- Programs will work with most file extensions (or no file extension). However, it is recommended that a text file extension (.txt) be used in the windows environment for both input and output files.
- Once installed, the shortcut can be modified to default to any folder when opened.
  1. *Right-click* on the GDOT Bridge Programs shortcut on the computer desktop.
  2. **Select Properties.**
  3. Enter path to desired folder in the “Start in” box.

EXAMPLE: If you desire the shortcut to open in a folder called Vax Programs located in a folder called Design on the M:\ network drive then the path to place in the “Start in” box would be: **M:\Design\Vax Programs.**