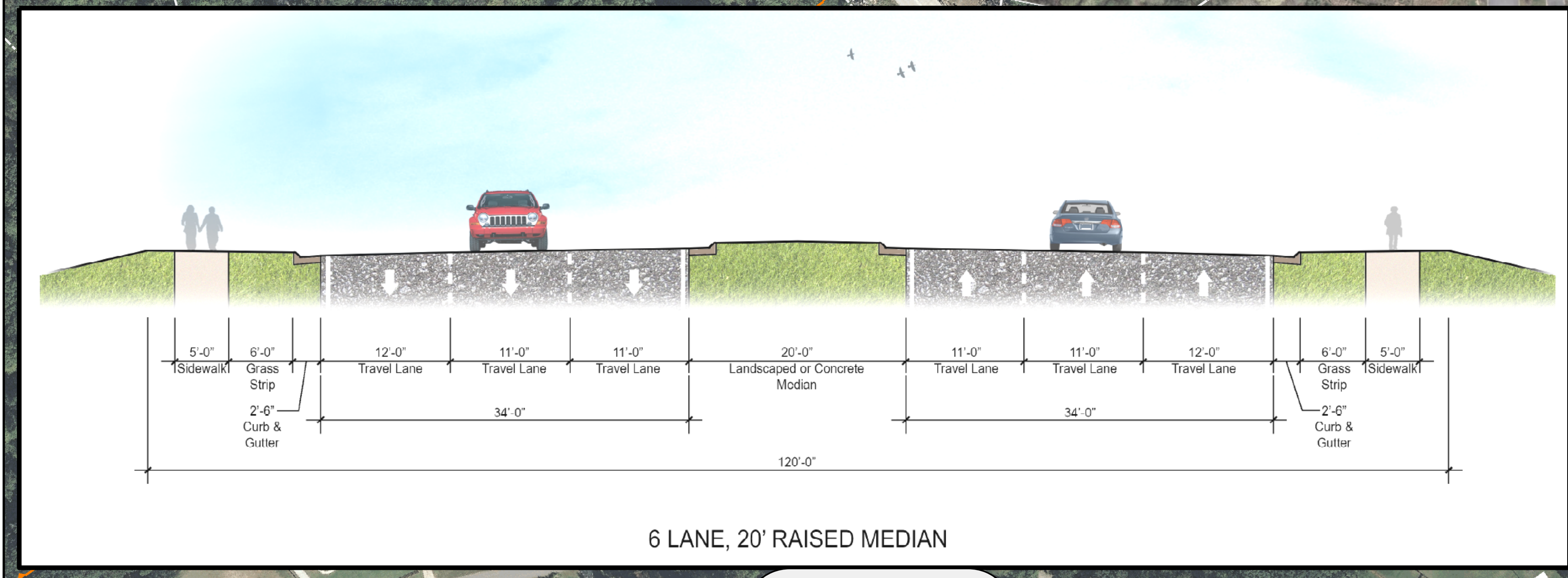
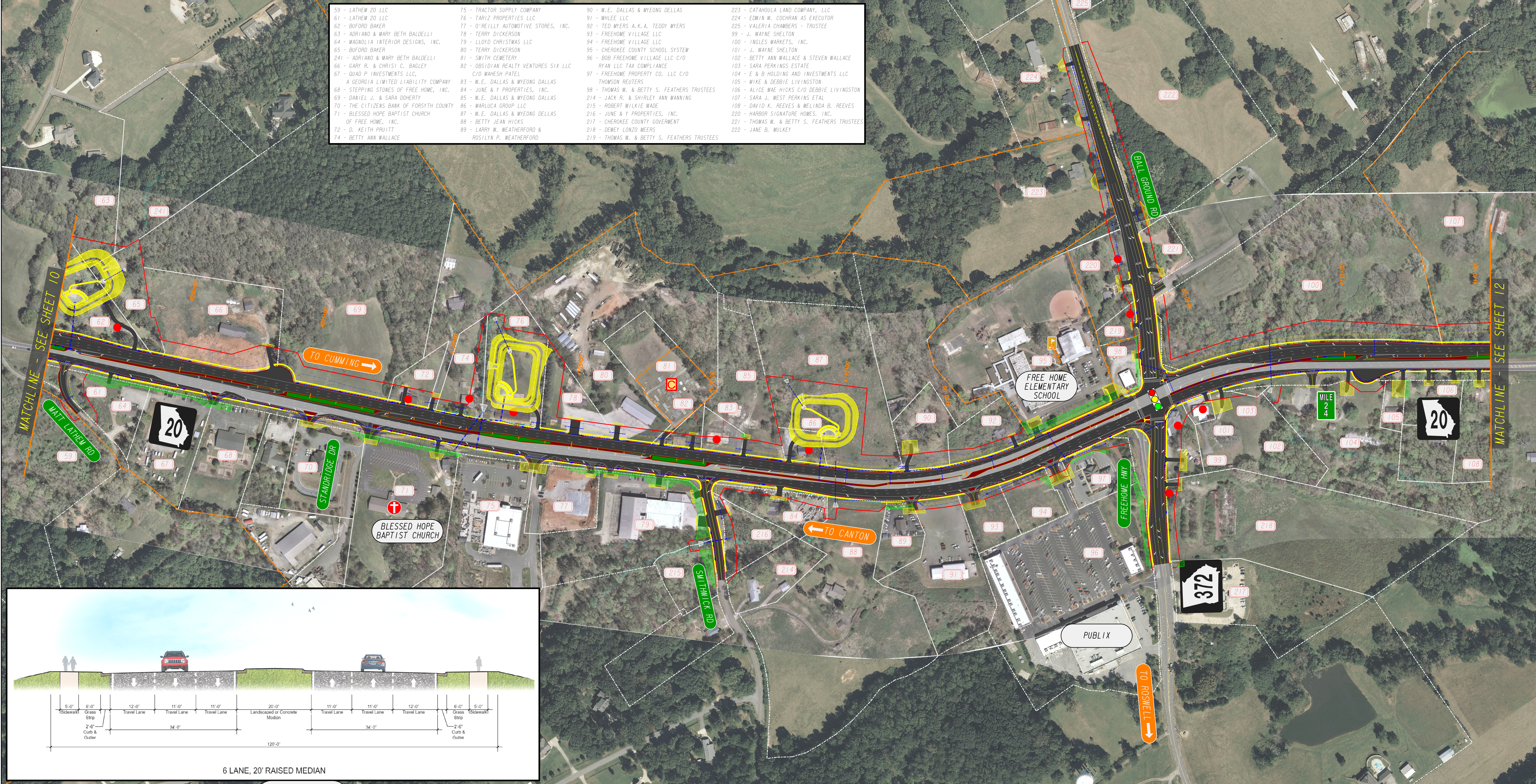
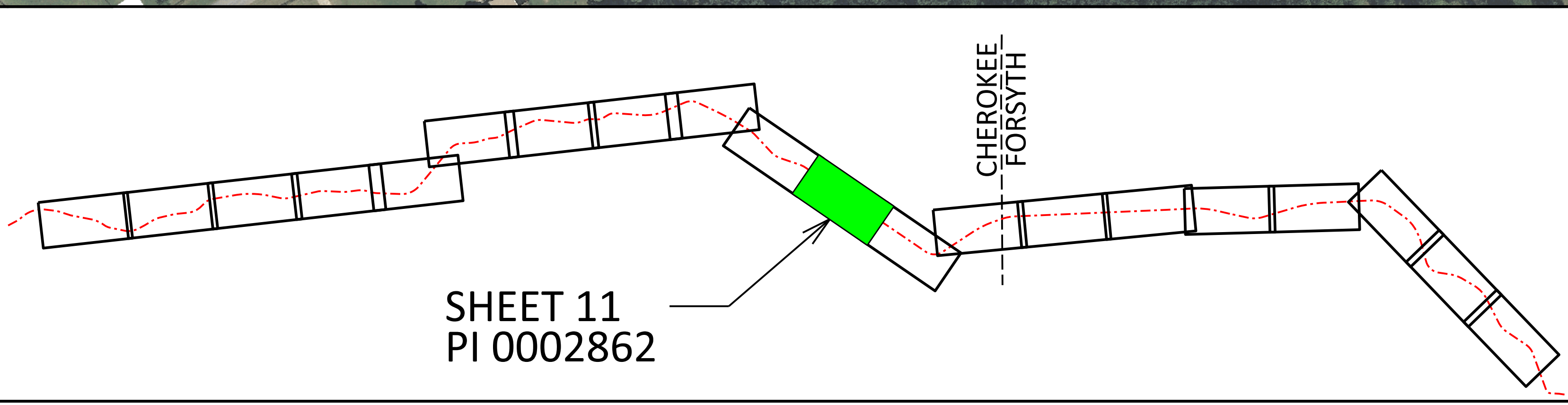


59 - LATHAM 20 LLC	75 - TRACTOR SUPPLY COMPANY	90 - W.E. DALLAS & MYEONG DELLAS	223 - CATAHOULA LAND COMPANY, LLC
61 - LATHAM 20 LLC	76 - TARIZ PROPERTIES LLC	91 - WHLEE LLC	224 - EDWIN W. COCHRAN AS EXECUTOR
62 - BUFORD BAKER	77 - O'REILLY AUTOMOTIVE STORES, INC.	92 - TED MYERS A.K.A. TEDDY MYERS	225 - VALERIA CHAMBERS - TRUSTEE
63 - ADRIANO & MARY BETH BALDELLI	78 - TERRY DICKERSON	93 - FREEHOME VILLAGE LLC	99 - J. WAYNE SHELTON
64 - MAGNOLIA INTERIOR DESIGNS, INC.	79 - LLOYD CHRISTMAS LLC	94 - FREEHOME VILLAGE LLC	100 - J. WAYNE SHELTON
65 - BUFORD BAKER	80 - TERRY DICKERSON	95 - CHEROKEE COUNTY SCHOOL SYSTEM	101 - J. WAYNE SHELTON
66 - ADRIANO & MARY BETH BALDELLI	81 - SMITH CEMETERY	96 - BOB FREEHOME VILLAGE LLC C/O RYAN LLC TAX COMPLIANCE	102 - BETTY ANN WALLACE & STEVEN WALLACE
67 - D'AD P INVESTMENTS LLC, A GEORGIA LIMITED LIABILITY COMPANY	82 - OBSIDIAN REALTY VENTURES SIX LLC C/O MAHESH PATEL	97 - FREEHOME PROPERTY CO. LLC C/O THOMSON REUTERS	103 - SARA PERKINS ESTATE
68 - STEPPING STONES OF FREE HOME, INC.	83 - W.E. DALLAS & MYEONG DALLAS	98 - THOMAS W. & BETTY S. FEATHERS TRUSTEES	104 - E & B HOLDING AND INVESTMENTS LLC
69 - DANIEL J. & SARA DOHERTY	84 - JUNE & Y PROPERTIES, INC.	214 - JACK R. & SHIRLEY ANN MANNING	105 - MIKE & DEBBIE LIVINGSTON
70 - THE CITIZENS BANK OF FORSYTH COUNTY	85 - W.E. DALLAS & MYEONG DALLAS	215 - ROBERT WILKIE WADE	106 - ALICE MAE HICKS C/O DEBBIE LIVINGSTON
71 - BLESSED HOPE BAPTIST CHURCH OF FREE HOME, INC.	86 - MARLUCA GROUP LLC	216 - JUNE & Y PROPERTIES, INC.	107 - SARA J. WEST PERKINS ETAL
72 - D. KEITH PRUITT	87 - W.E. DALLAS & MYEONG DALLAS	217 - CHEROKEE COUNTY GOVERNMENT	108 - DAVID K. REEVES & MELINDA B. REEVES
74 - BETTY ANN WALLACE	88 - BETTY JEAN HICKS	218 - DEWEY LONZO MEERS	220 - HARBOR SIGNATURE HOMES, INC.
	89 - LARRY W. WEATHERFORD & ROSLYN P. WEATHERFORD	219 - THOMAS W. & BETTY S. FEATHERS TRUSTEES	221 - THOMAS W. & BETTY S. FEATHERS TRUSTEES
		219 - THOMAS W. & BETTY S. FEATHERS TRUSTEES	222 - JANE B. MULKEY



LEGEND			
	HISTORIC RESOURCES		LIMITS
	STREAMS/WETLANDS		EXISTING PAVEMENT
	REQUIRED RIGHT-OF-WAY (R/W)		PROPOSED PAVEMENT
	DRIVEWAY EASEMENT		PAVED MEDIAN
	PERMANENT EASEMENT		GRASSED MEDIAN
	POTENTIAL DISPLACEMENT		CURB AND GUTTER
	EXIST. PROPERTY & R/W		SIDEWALK
			WALL/BARRIER
	GUARDRAIL		CHURCH
	PROPOSED DRAINAGE STRUCTURE		EXISTING TRAFFIC SIGNAL
	SCHOOL		PROPOSED TRAFFIC SIGNAL
	POTENTIAL POND		



PIOH APRIL 2020
SR 20 - CORRIDOR IMPROVEMENTS
PROPOSED ALIGNMENT

SCALE IN FEET
0 100 200 400

SHEET 11