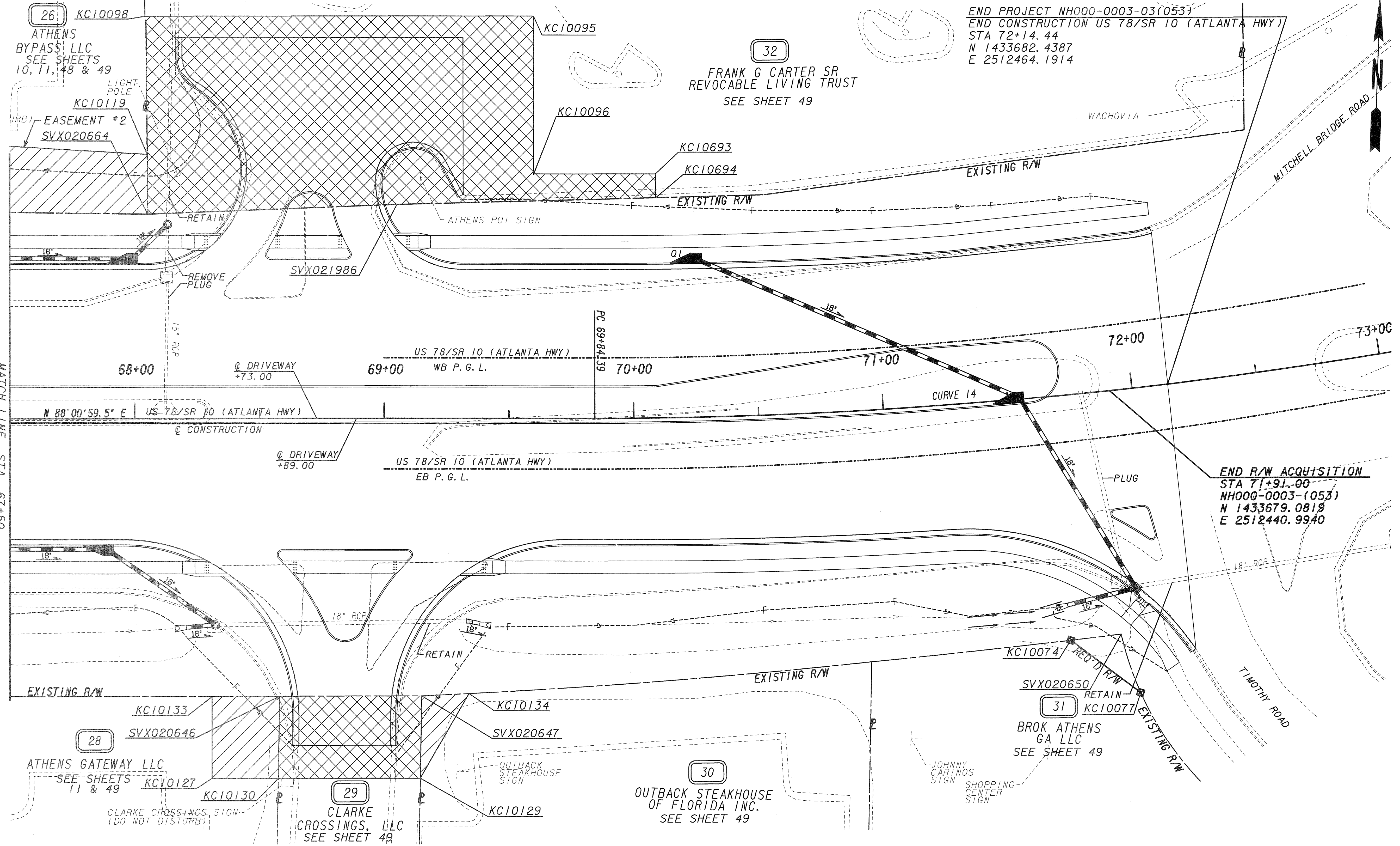


**CURVE \*14**  
 $\Delta = 11^\circ 45' 46.8''$  LT  
 $D = 2^\circ 51' 53.2''$   
 $T = 206.03'$   
 $L = 410.61'$   
 $R = 2000.00'$   
 SE - MATCH EXISTING  
 PI STA = 71+90.42  
 PI N = 1433668.4187  
 PI E = 2512441.1498

MATCH LINE STA. 67+50  
 N 1433653.1753  
 E 2512000.9943  
 SEE SHEET 11

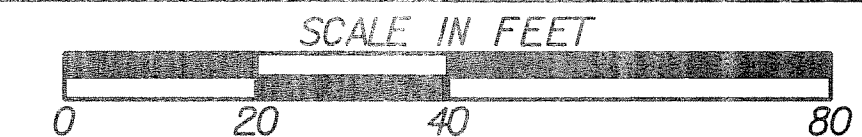


END PROJECT NH000-0003-03(053)  
 END CONSTRUCTION US 78/SR 10 (ATLANTA HWY)  
 STA 72+14.44  
 N 1433682.4387  
 E 2512464.1914

END R/W ACQUISITION  
 STA 71+91.00  
 NH000-0003-(053)  
 N 1433679.0819  
 E 2512440.9940

NOTE: DO NOT DISTURB CLARKE CROSSING SIGN STA 68+58 RT.

PROPERTY AND EXISTING R/W LINE REQUIRED R/W LINE CONSTRUCTION LIMITS EASEMENT FOR CONSTR & MAINTENANCE OF SLOPES EASEMENT FOR CONSTR OF SLOPES EASEMENT FOR CONSTR OF DRIVES		BEGIN LIMIT OF ACCESS.....BLA END LIMIT OF ACCESS.....ELA LIMIT OF ACCESS REQ'D R/W & LIMIT OF ACCESS	DATE	REVISIONS	DATE	REVISIONS
			5-17-11	SEE REVISION SUMMARY SHEET		



STATE OF GEORGIA  
 DEPARTMENT OF TRANSPORTATION  
**RIGHT OF WAY MAP**  
 PROJECT NO: NH000-0003-03-(053)  
 COUNTY: CLARKE  
 LAND LOT NO: N/A  
 LAND DISTRICT: 1  
 GMD: 241  
 DATE: 6-9-09 SH 12 OF 52