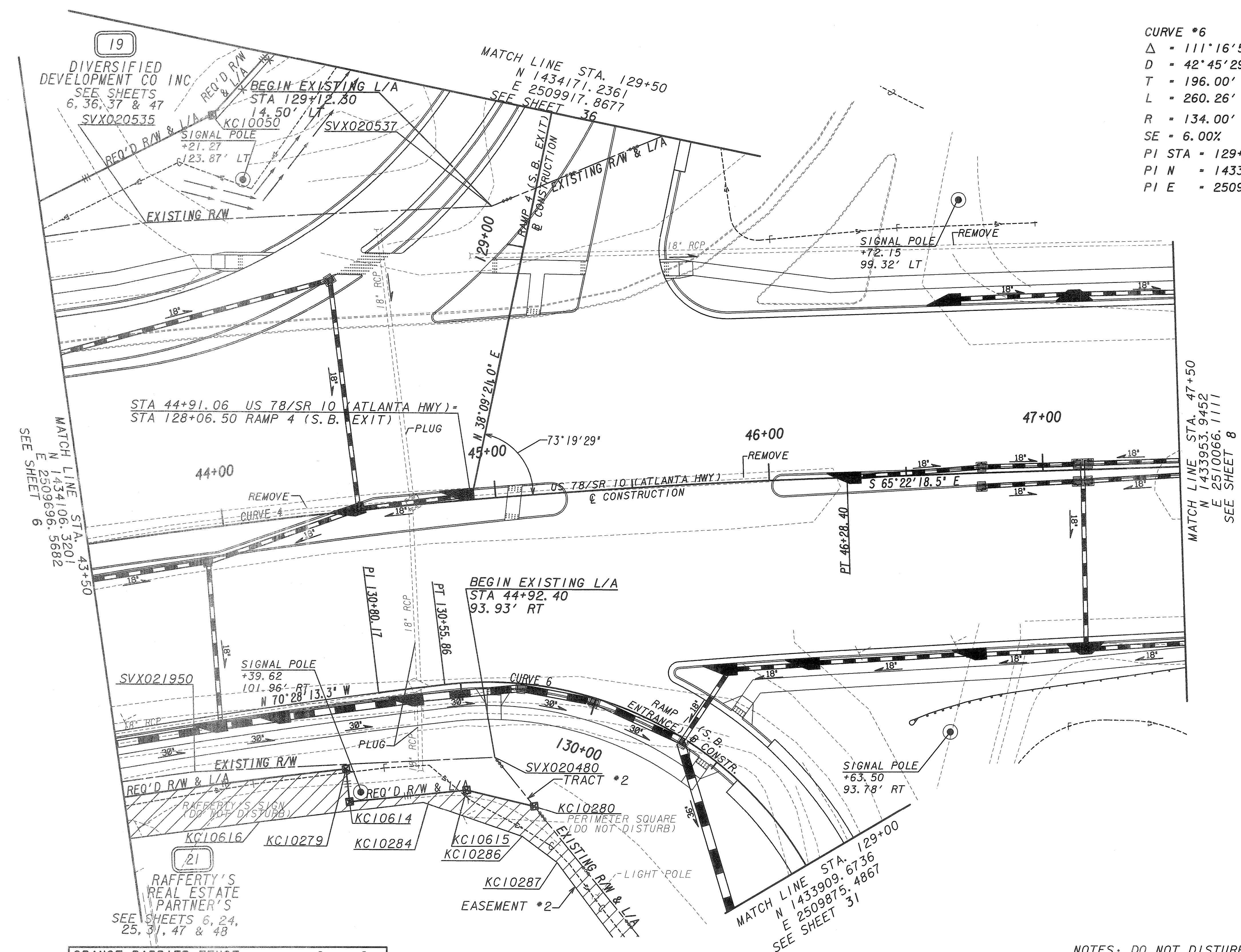
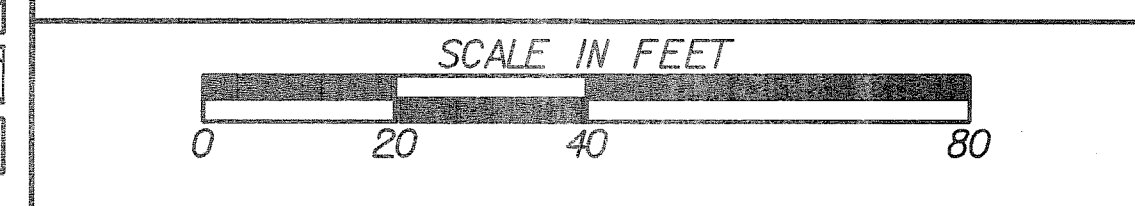
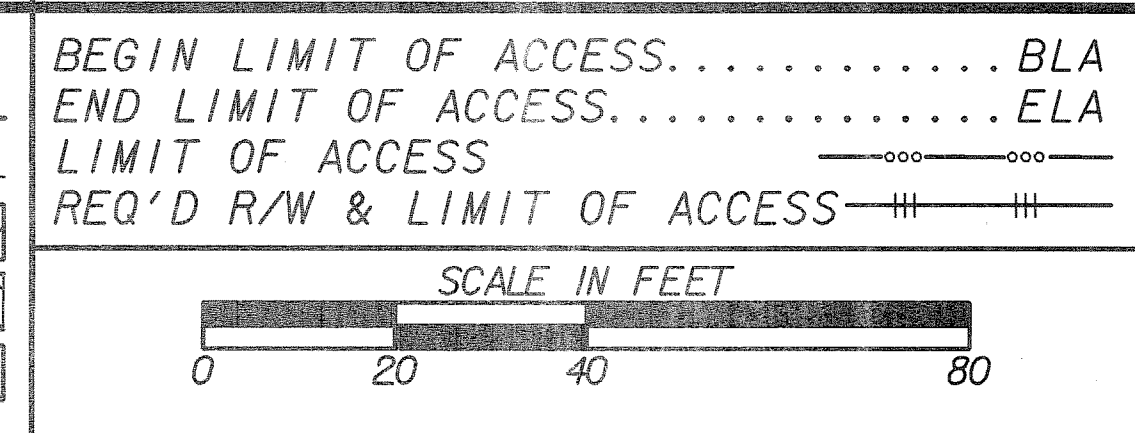


CURVE *4
 $\Delta = 13^{\circ}49'20.7''$ RT
 $D = 2^{\circ}17'30.6''$
 $T = 303.03'$
 $L = 603.12'$
 $R = 2500.00'$
 $SE = 2.60\%$
 $PI STA = 43+28.31$
 $PI N = 1434130.9000$
 $PI E = 2509680.1100$

CURVE *6
 $\Delta = 111^{\circ}16'52.4''$ LT
 $D = 42^{\circ}45'29.0''$
 $T = 196.00'$
 $L = 260.26'$
 $R = 134.00'$
 $SE = 6.00\%$
 $PI STA = 129+91.60$
 $PI N = 1433936.8500$
 $PI E = 2509975.2850$



ORANGE BARRIER FENCE
 FIELD FENCING



DATE	REVISIONS	DATE	REVISIONS
5-17-11	SEE REVISION SUMMARY SHEET		

NOTES: DO NOT DISTURB PERIMETER SQUARE SIGN STA 44+75 RT.
 DO NOT DISTURB RAFFERTY'S SIGN STA 43+53 RT.

PROPERTY AND EXISTING R/W LINE
 REQUIRED R/W LINE
 CONSTRUCTION LIMITS
 EASEMENT FOR CONSTR
 & MAINTENANCE OF SLOPES
 EASEMENT FOR CONSTR OF SLOPES
 EASEMENT FOR CONSTR OF DRIVES

STATE OF GEORGIA
 DEPARTMENT OF TRANSPORTATION
RIGHT OF WAY MAP
 PROJECT NO: NH000-0003-03-(053)
 COUNTY: CLARKE
 LAND LOT NO: N/A
 LAND DISTRICT: 1
 GMD: 241
 DATE: 6-9-09 SH 7 OF 52