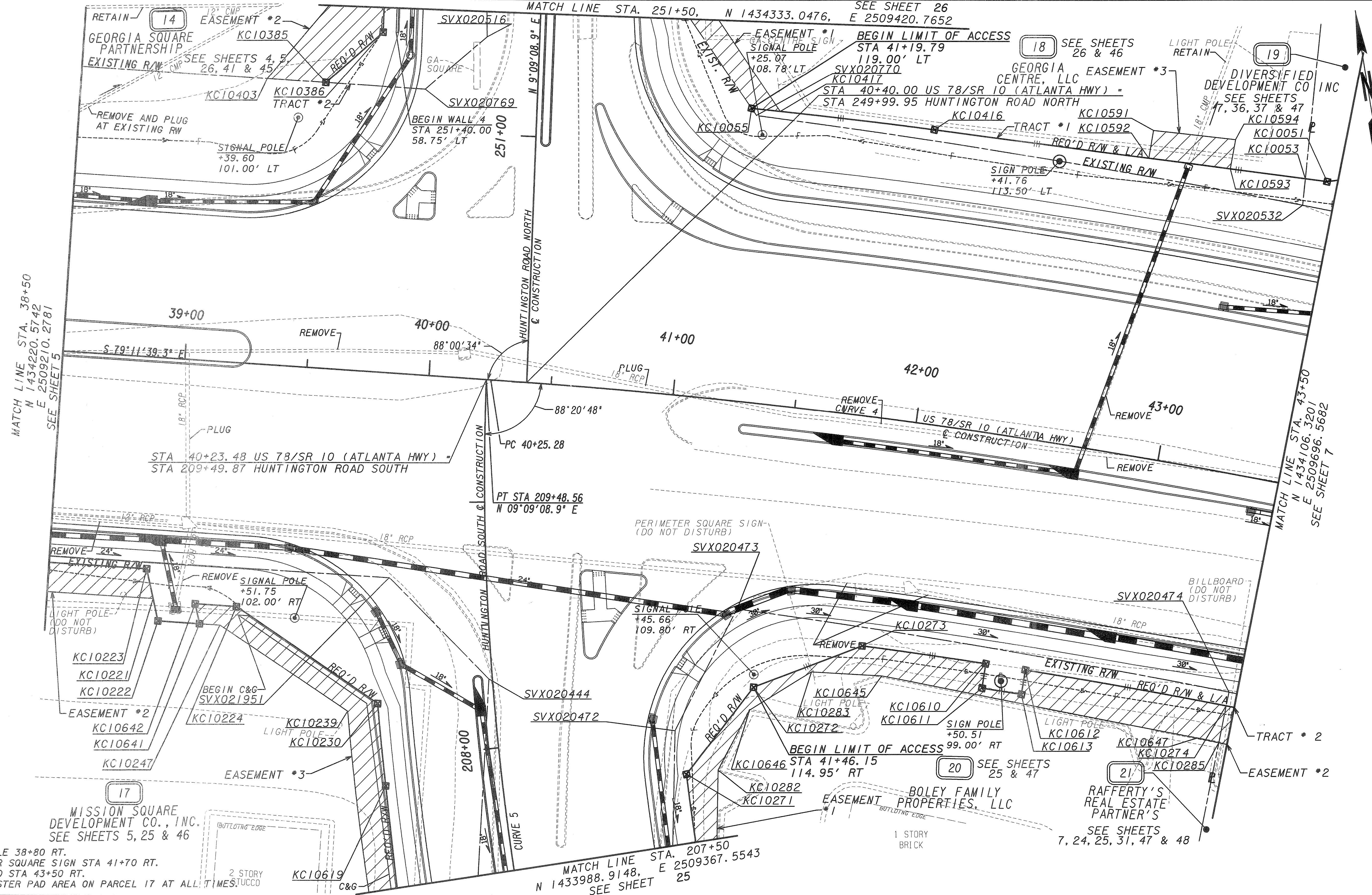


CURVE *4
 $\Delta = 13^{\circ}49'20.7''$ RT
 $D = 2'17'30.6''$
 $T = 303.03'$
 $L = 603.12'$
 $R = 2500.00'$
 $SE = 2.60\%$
 $PI\ STA = 43+28.31$
 $PI\ N = 1434130.9000$
 $PI\ E = 2509680.1100$

CURVE *5
 $\Delta = 19^{\circ}04'26.1''$ RT
 $D = 5'27'24.3''$
 $T = 176.41'$
 $L = 349.55'$
 $R = 1050.00'$
 $SE = 2.24\%$
 $PI\ STA = 207+75.42$
 $PI\ N = 1434012.6000$
 $PI\ E = 2509352.4100$

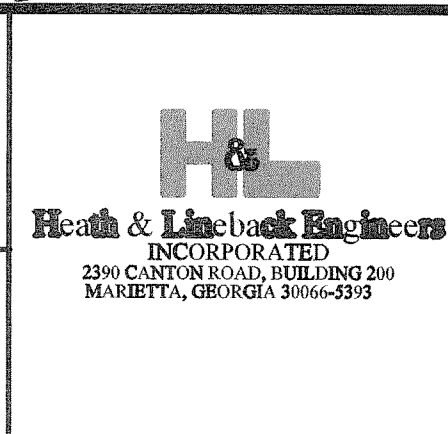


NOTES: DO NOT DISTURB LIGHT POLE 38+80 RT.
 DO NOT DISTURB PERIMETER SQUARE SIGN STA 41+70 RT.
 DO NOT DISTURB BILLBOARD STA 43+50 RT.
 MAINTAIN ACCESS TO DUMPSTER PAD AREA ON PARCEL 17 AT ALL TIMES.

PROPERTY AND EXISTING R/W LINE	—E—
REQUIRED R/W LINE	—C—
CONSTRUCTION LIMITS	—F—
EASEMENT FOR CONSTR & MAINTENANCE OF SLOPES	[Hatched Box]
EASEMENT FOR CONSTR OF SLOPES	[Diagonal Hatched Box]
EASEMENT FOR CONSTR OF DRIVES	[Cross-hatched Box]

BEGIN LIMIT OF ACCESS.....	BLA
END LIMIT OF ACCESS.....	ELA
LIMIT OF ACCESS	—O—
REQ'D R/W & LIMIT OF ACCESS	—H—

SCALE IN FEET
 0 20 40 80



DATE	REVISIONS	DATE	REVISIONS
5-17-11	SEE REVISION SUMMARY SHEET		

DATE	REVISIONS

STATE OF GEORGIA
 DEPARTMENT OF TRANSPORTATION
RIGHT OF WAY MAP
 PROJECT NO: NH000-0003-03-(053)
 COUNTY: CLARKE
 LAND LOT NO: N/A
 LAND DISTRICT: 1
 GMD: 241
 DATE: 6-9-09 SH 6 OF 52