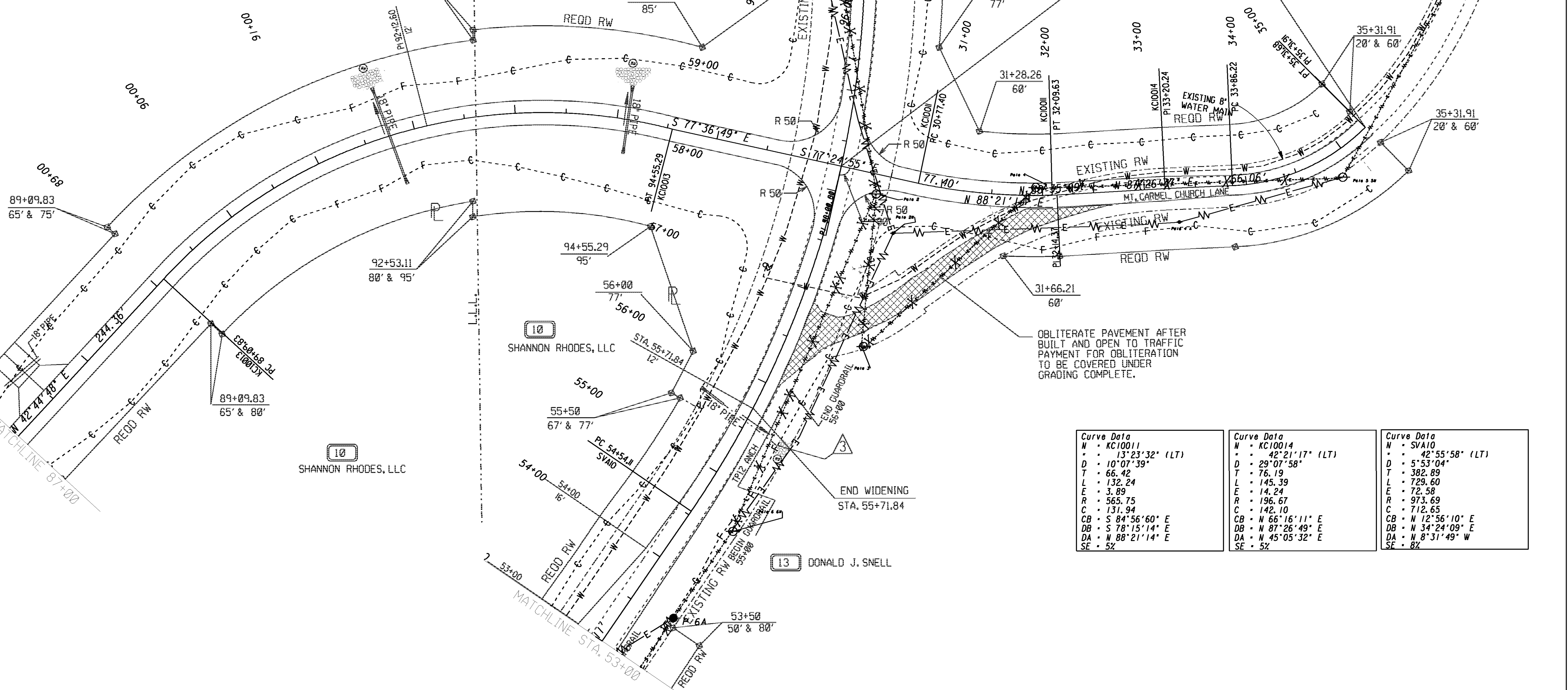


Curve Data

N	• KC10013
•	• 61°54'22" (RT)
D	• 11'20'58"
T	• 302.78
L	• 545.46
E	• 83.83
R	• 504.84
C	• 519.31
CB	• N 73°35'00" E
DB	• N 42°37'49" E
DA	• S 75°27'49" E
SE	• 8%

10A
 CHEROKEE COUNTY SCHOOL SYSTEM

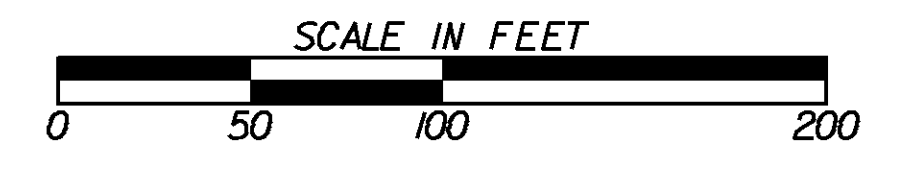


Curve Data	
N	• KC10011
•	• 13°23'32" (LT)
D	• 10'07'39"
T	• 66.42
L	• 132.24
E	• 3.89
R	• 565.75
C	• 131.94
CB	• S 84°56'60" E
DB	• S 78°15'14" E
DA	• N 88°21'14" E
SE	• 5%

Curve Data	
N	• KC10014
•	• 42°21'17" (LT)
D	• 29'07'58"
T	• 76.19
L	• 145.39
E	• 14.24
R	• 196.67
C	• 142.10
CB	• N 66°16'11" E
DB	• N 87°26'49" E
DA	• N 45°05'32" E
SE	• 5%

Curve Data	
N	• SVA10
•	• 42°55'58" (LT)
D	• 5'53'04"
T	• 382.89
L	• 729.60
E	• 72.58
R	• 973.69
C	• 712.65
CB	• N 12°56'10" E
DB	• N 34°24'09" E
DA	• N 8°31'49" W
SE	• 8%

GEORGIA
 DEPARTMENT
 OF
 TRANSPORTATION



REVISION DATES	

STATE OF GEORGIA DEPARTMENT OF TRANSPORTATION
OFFICE:
UTILITY PLANS

DRAWING No.
24-004

1/5/2009
 GPN
 662650.dgn (served) (Rev: 2/7/2014 9:45:27 AM) 4241-63
 662650.dwg (w/Block) (Rev: 01/13/14 10:45:03 AM) 4241-63
 662650.dwg (w/Block) (Rev: 01/13/14 10:45:03 AM) 4241-63
 662650.dwg (w/Block) (Rev: 01/13/14 10:45:03 AM) 4241-63
 662650.dwg (w/Block) (Rev: 01/13/14 10:45:03 AM) 4241-63