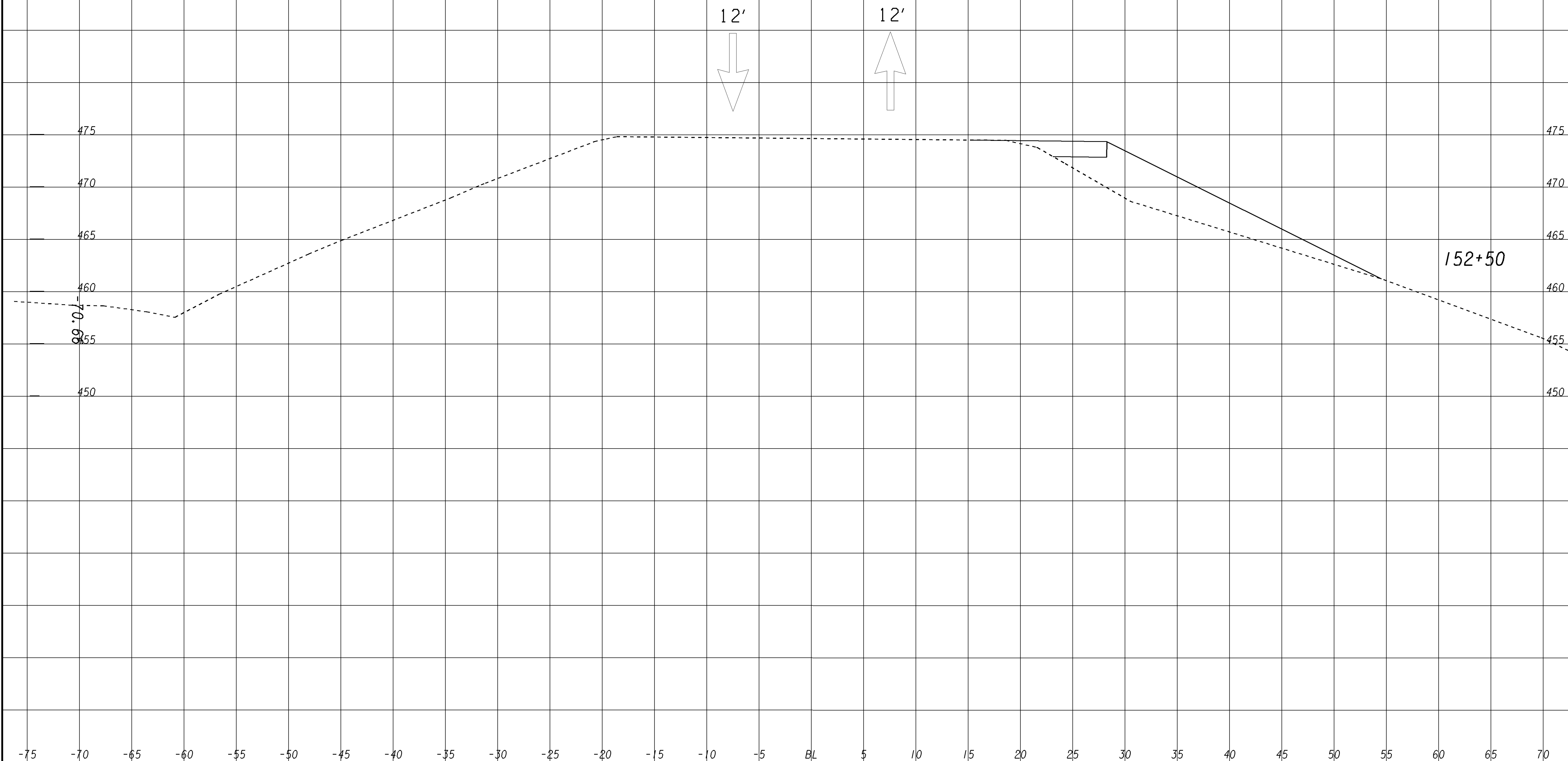
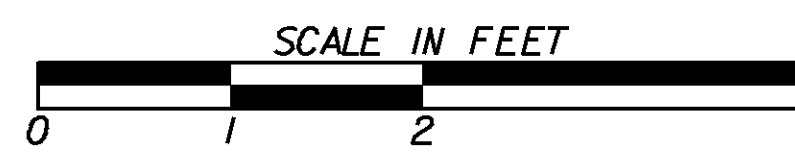


PHASE 1
 MAINTAIN TRAFFIC ON EXISTING PAVEMENT.
 BUILD TEMPORARY PAVEMENT ON RIGHT SIDE STA. 152+50 TO 164+00



SUXSEW

GEORGIA
 DEPARTMENT
 OF
 TRANSPORTATION



REVISION DATES

STATE OF GEORGIA
 DEPARTMENT OF TRANSPORTATION

OFFICE:
STAGING CROSS SECTIONS

SR20 STAGING CROSS SECTIONS
 STAGE 1

DRAWING No.
19-16