

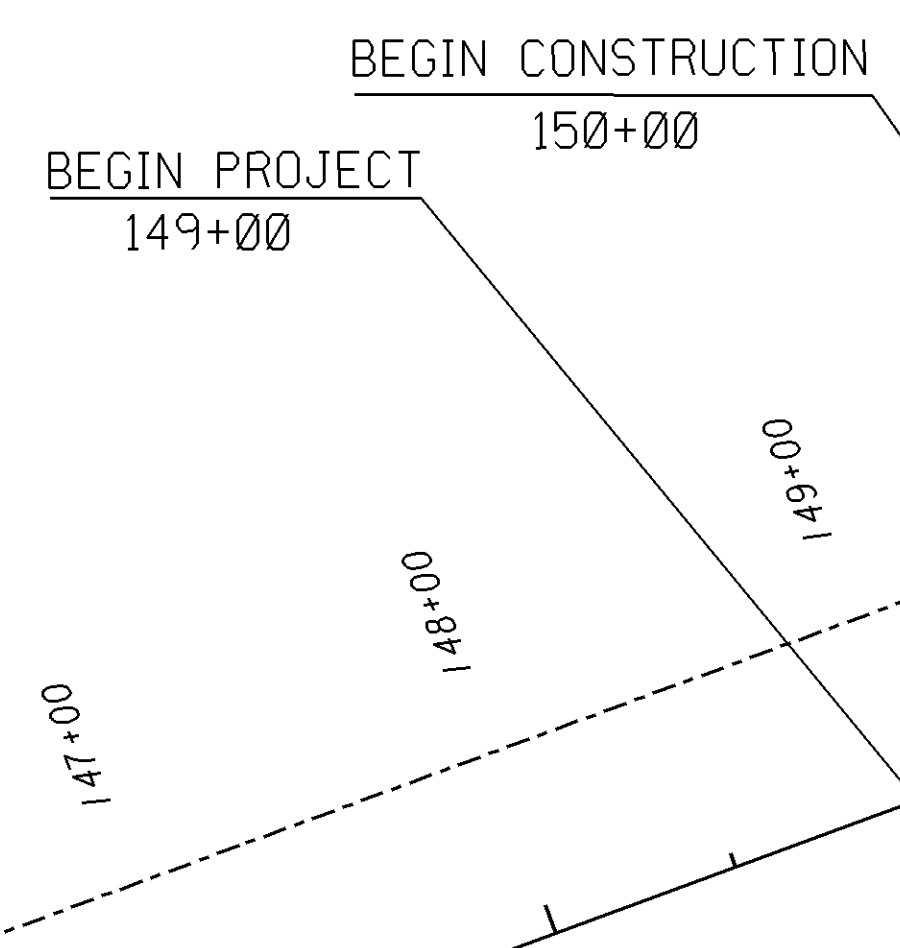
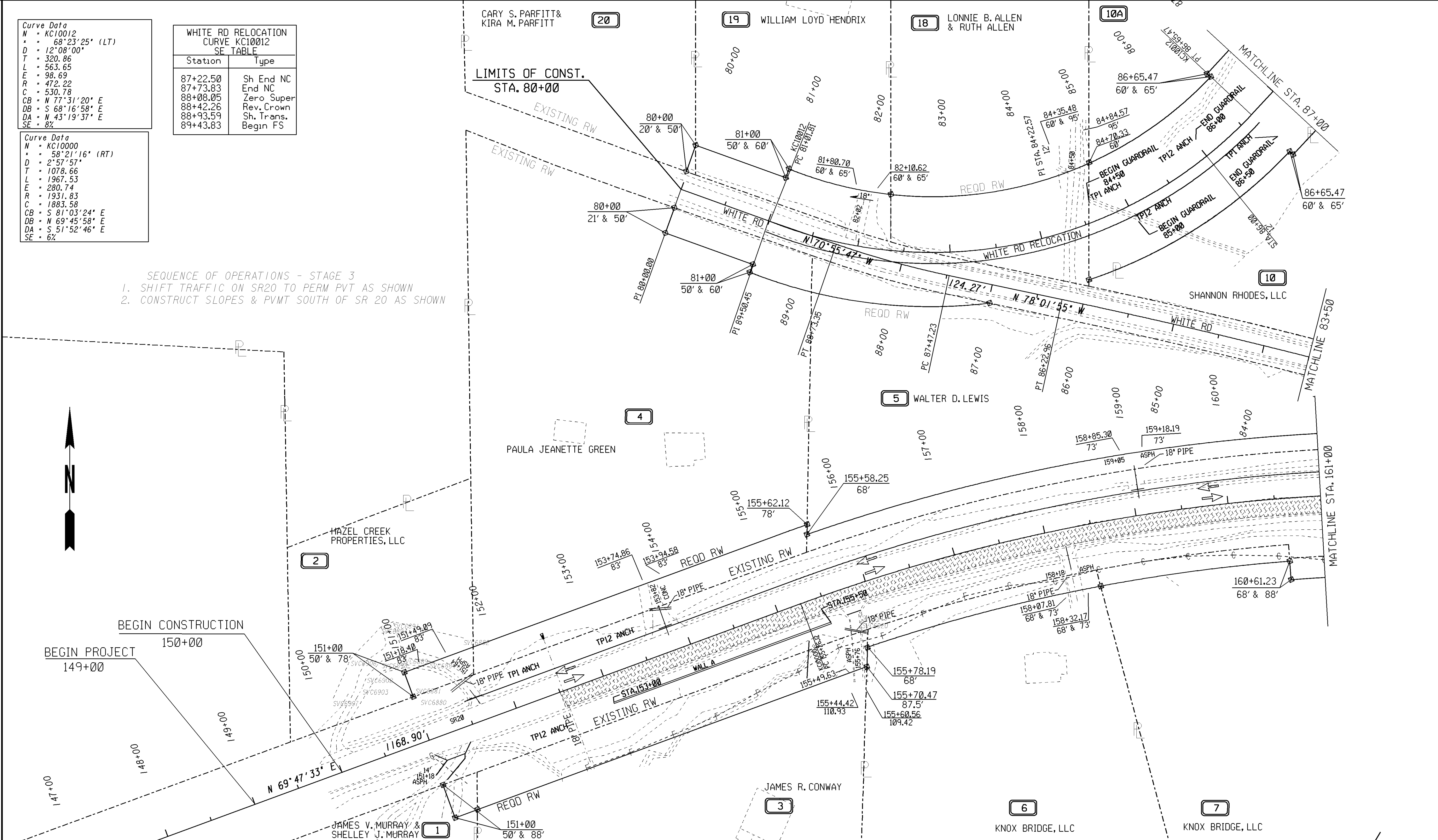
**Curve Data**  
 N = KC10012  
 Δ = 68°23'25" (LT)  
 D = 12°08'00"  
 T = 320.86  
 L = 563.65  
 E = 98.69  
 R = 472.22  
 C = 530.78  
 CB = N 77°31'20" E  
 DB = S 68°16'58" E  
 DA = N 43°19'37" E  
 SE = 8%

**WHITE RD RELOCATION CURVE KC10012 SE TABLE**

Station	Type
87+22.50	Sh End NC
87+73.83	End NC
88+08.05	Zero Super
88+42.26	Rev. Crown
88+93.59	Sh. Trans.
89+43.83	Begin FS

**Curve Data**  
 N = KC10000  
 Δ = 58°21'16" (RT)  
 D = 2°57'57"  
 T = 1078.66  
 L = 1967.53  
 E = 280.74  
 R = 1931.83  
 C = 1883.58  
 CB = S 81°03'24" E  
 DB = N 69°45'58" E  
 DA = S 51°52'46" E  
 SE = 6%

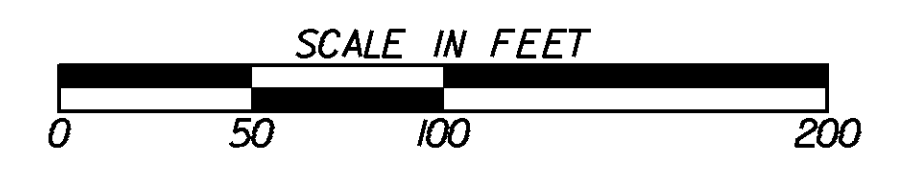
SEQUENCE OF OPERATIONS - STAGE 3  
 1. SHIFT TRAFFIC ON SR20 TO PERM PVT AS SHOWN  
 2. CONSTRUCT SLOPES & PVMT SOUTH OF SR 20 AS SHOWN



**LEGEND**

PAVEMENT REMOVAL	
TEMPORARY CONSTRUCTION PAVEMENT	
PERMANENT CONSTRUCTION	
CONCRETE MEDIAN CONSTRUCTION	
MILL & OVERLAY CONSTRUCTION	
OPEN LANES OF TRAFFIC	

**GEORGIA**  
 DEPARTMENT  
 OF  
 TRANSPORTATION



**REVISION DATES**

No.	Date	Description

STATE OF GEORGIA  
 DEPARTMENT OF TRANSPORTATION  
 OFFICE: DISTRICT SIX ROAD DESIGN  
**CONSTRUCTION STAGING PLAN**  
 SR20 STAGE 3

DRAWING No.  
**19-05**