

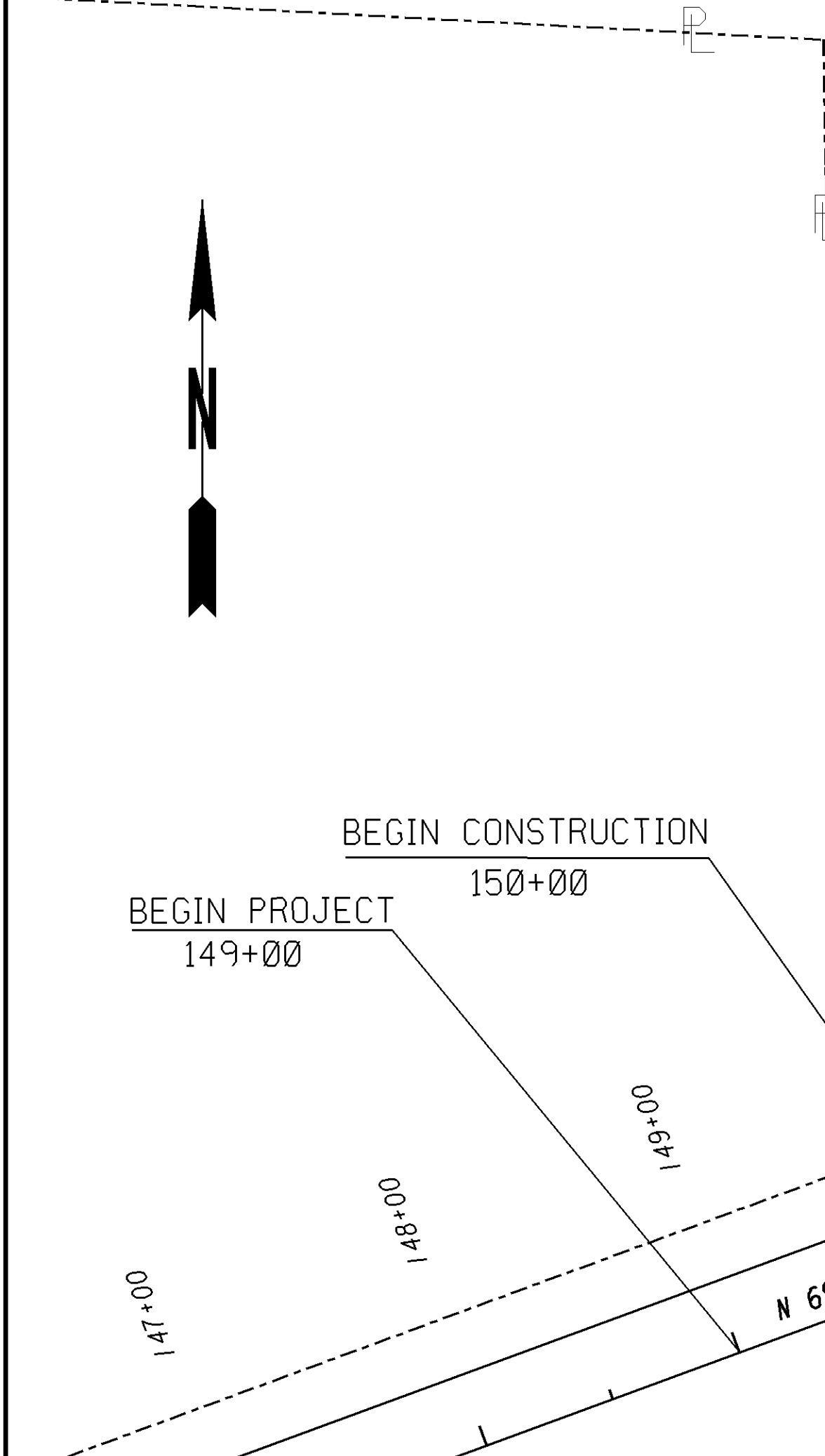
Curve Data
 N = KC10012
 Δ = 68°23'25" (LT)
 D = 12°08'00"
 T = 320.86
 L = 563.65
 E = 98.69
 R = 472.22
 C = 530.78
 CB = N 77°31'20" E
 DB = S 68°16'58" E
 DA = N 43°19'37" E
 SE = 8%

WHITE RD RELOCATION CURVE KC10012 SE TABLE

Station	Type
87+22.50	Sh End NC
87+73.83	End NC
88+08.05	Zero Super
88+42.26	Rev. Crown
88+93.59	Sh. Trans.
89+43.83	Begin FS

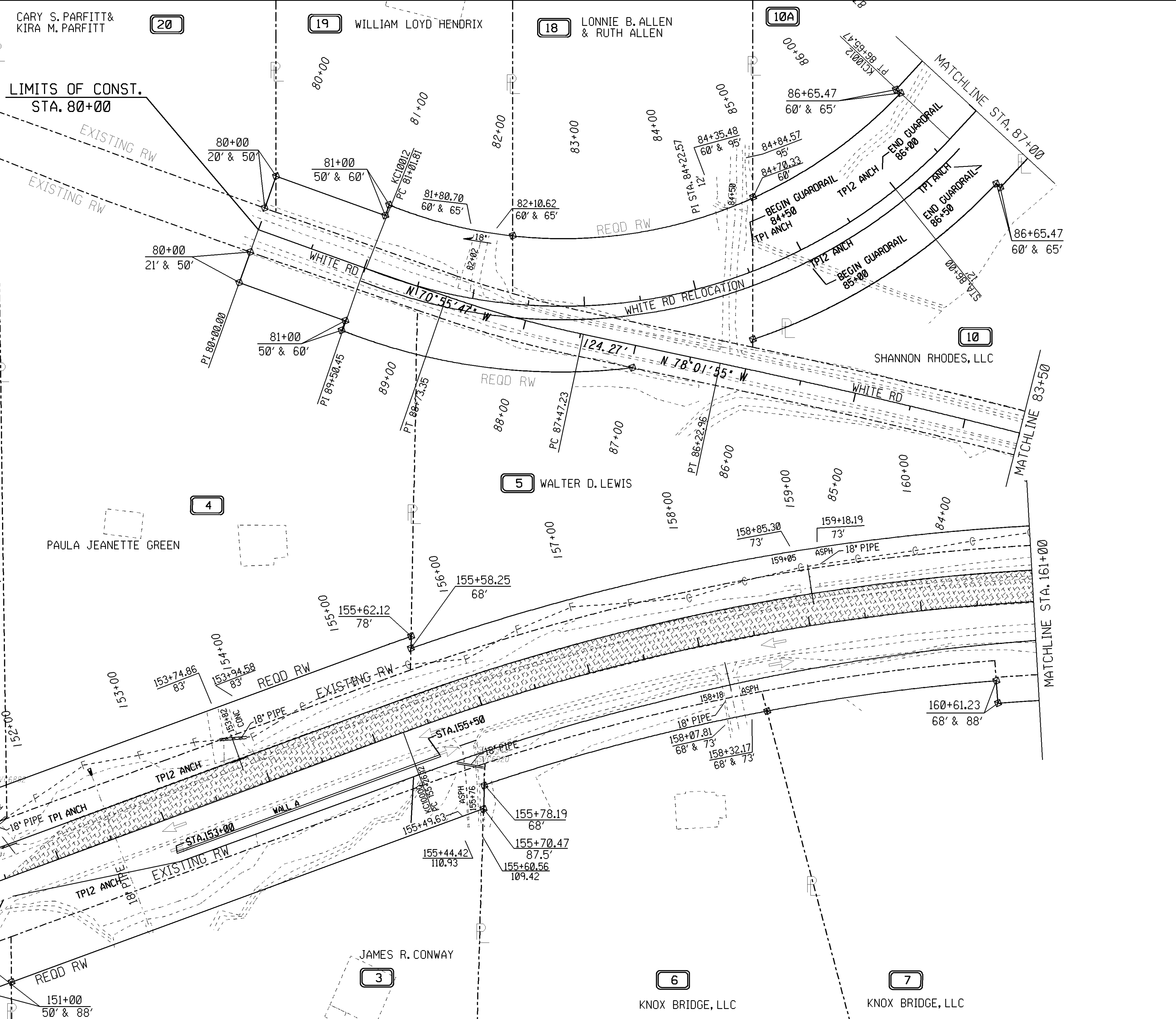
Curve Data
 N = KC10000
 Δ = 58°21'16" (RT)
 D = 2°57'57"
 T = 1078.66
 L = 1967.53
 E = 280.74
 R = 1931.83
 C = 1883.58
 CB = S 81°03'24" E
 DB = S 69°45'58" E
 DA = S 51°52'46" E
 SE = 6%

SEQUENCE OF OPERATIONS - STAGE 2
 1. SHIFT TRAFFIC ON SR20 TO TEMP PVMT AS SHOWN
 2. CONSTRUCT PERM PVMT AND SLOPES NORTH OF SR20 AS SHOWN

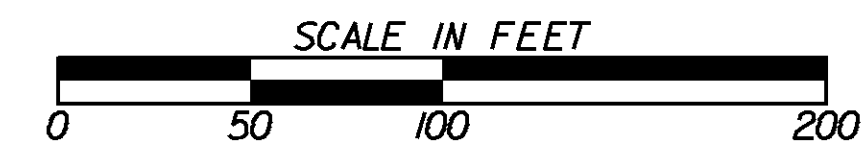


LEGEND

PAVEMENT REMOVAL	
TEMPORARY CONSTRUCTION PAVEMENT	
PERMANENT CONSTRUCTION	
CONCRETE MEDIAN CONSTRUCTION	
MILL & OVERLAY CONSTRUCTION	
OPEN LANES OF TRAFFIC	



GEORGIA
 DEPARTMENT
 OF
 TRANSPORTATION



REVISION DATES

NO.	DATE	DESCRIPTION

STATE OF GEORGIA
 DEPARTMENT OF TRANSPORTATION
 OFFICE: DISTRICT SIX ROAD DESIGN
CONSTRUCTION STAGING PLAN
 SR20 STAGE 2

DRAWING No.
19-03