

Curve Data
 N = KC10012
 Δ = 68°23'25" (LT)
 D = 12°08'00"
 T = 320.86
 L = 563.65
 E = 98.69
 C = 472.22
 CB = N 77°31'20" E
 DB = S 68°16'58" E
 DA = N 43°19'37" E
 SE = 8%

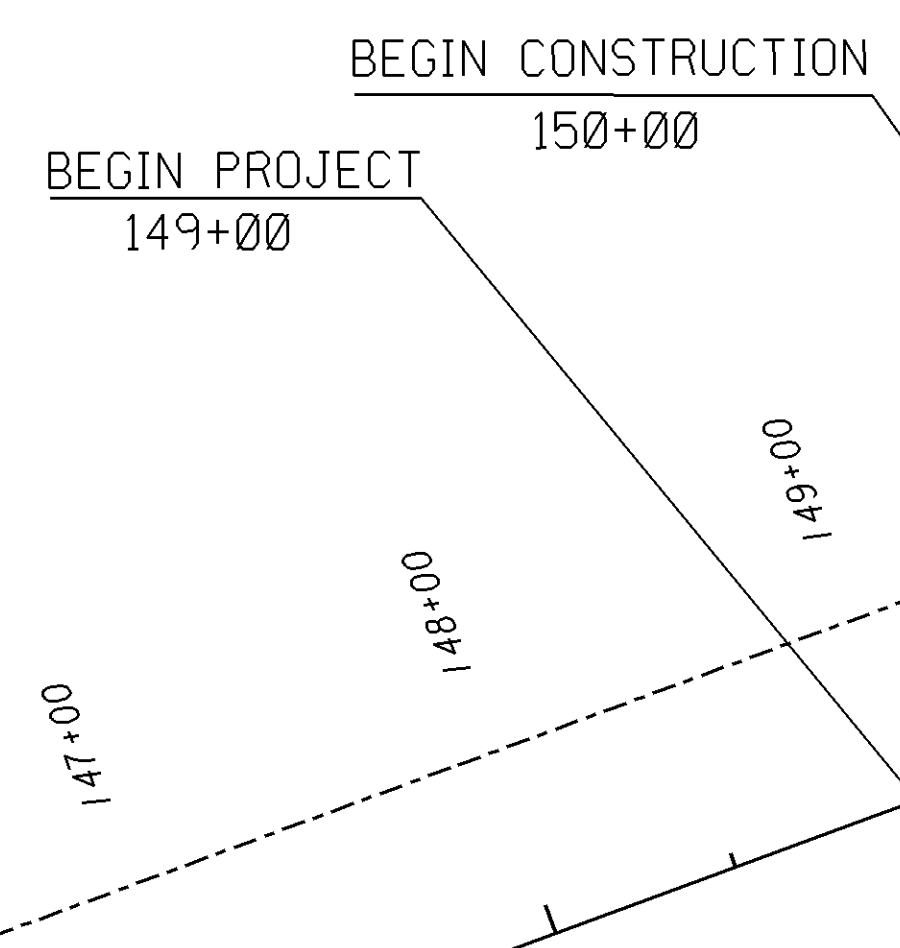
WHITE RD RELOCATION
 CURVE KC10012
 SE TABLE

Station	Type
87+22.50	Sh End NC
87+73.83	End NC
88+08.05	Zero Super
88+42.26	Rev. Crown
88+93.59	Sh. Trans.
89+43.83	Begin FS

Curve Data
 N = KC10000
 Δ = 58°21'16" (RT)
 D = 2°57'57"
 T = 1078.66
 L = 1967.53
 E = 280.74
 C = 1931.83
 CB = S 81°03'24" E
 DB = N 69°45'58" E
 DA = S 51°52'46" E
 SE = 6%

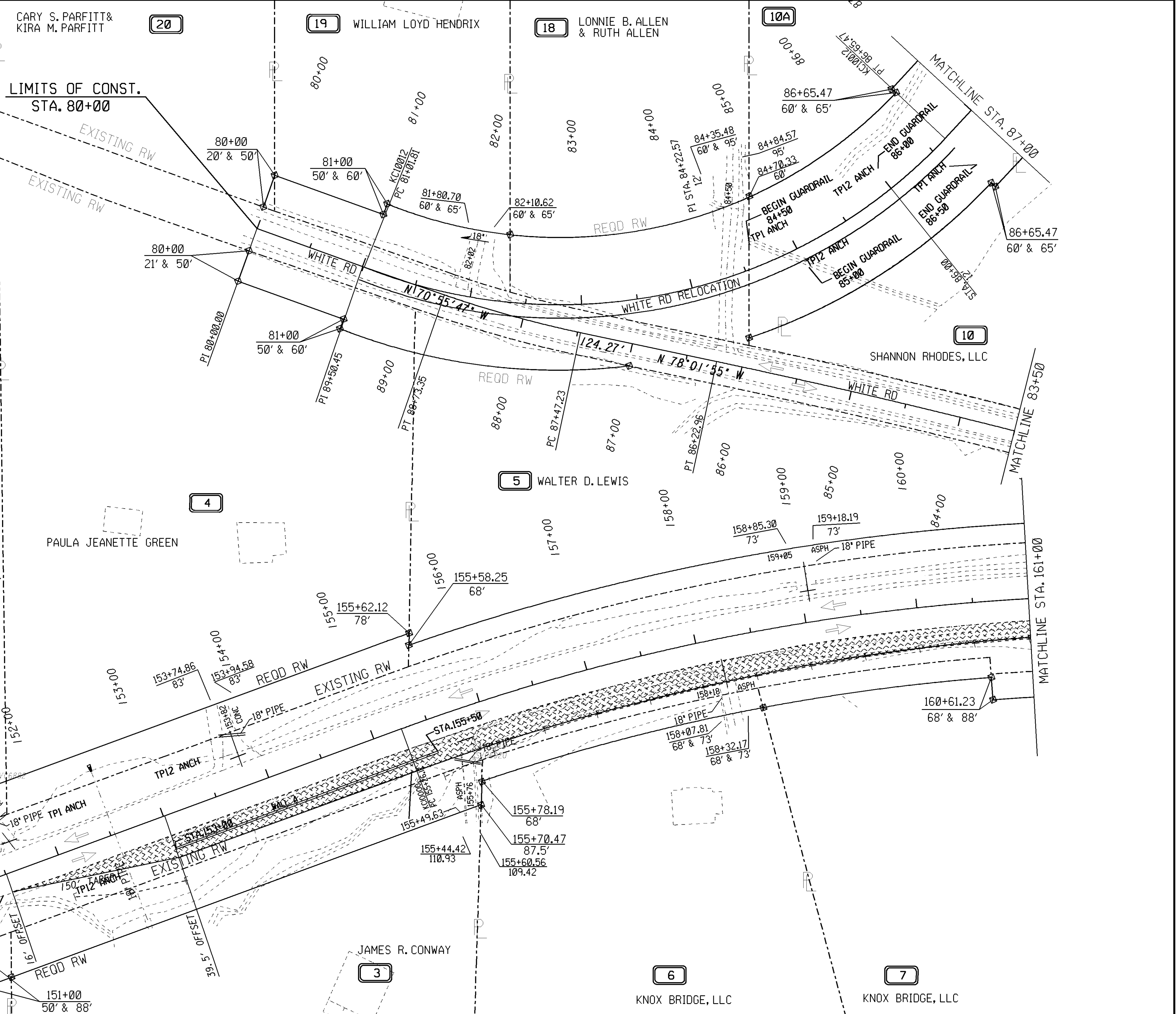
- SEQUENCE OF OPERATIONS - STAGE 1
1. MAINTAIN TWO WAY TRAFFIC ON EXISTING SR20, SR108, UPPERSWEETWATER, WHITE RD, AND MT. OLIVE RD.
 2. INSTALL AND MAINTAIN CONSTRUCTION EXITS
 3. CONSTRUCT ALL DRAINAGE STRUCTURES
 4. CONSTRUCT TEMPORARY PAVEMENT ON SR20 AS SHOWN

SHORING TO BE USED ON SR20 RIGHT AT STA. 153+00 TO 155+50

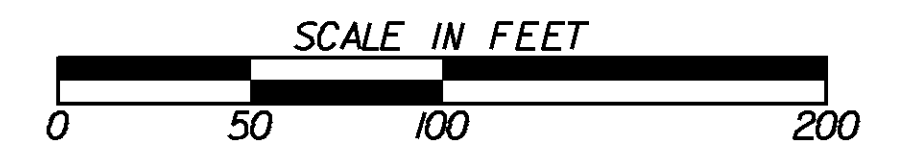


LEGEND

PAVEMENT REMOVAL	
TEMPORARY CONSTRUCTION PAVEMENT	
PERMANENT CONSTRUCTION	
CONCRETE MEDIAN CONSTRUCTION	
MILL & OVERLAY CONSTRUCTION	
OPEN LANES OF TRAFFIC	



GEORGIA
 DEPARTMENT
 OF
 TRANSPORTATION



REVISION DATES

NO.	DATE	DESCRIPTION

STATE OF GEORGIA
 DEPARTMENT OF TRANSPORTATION
 OFFICE: DISTRICT SIX ROAD DESIGN
**CONSTRUCTION STAGING
 PLAN**
 SR20 STAGE I

DRAWING No.
19-01