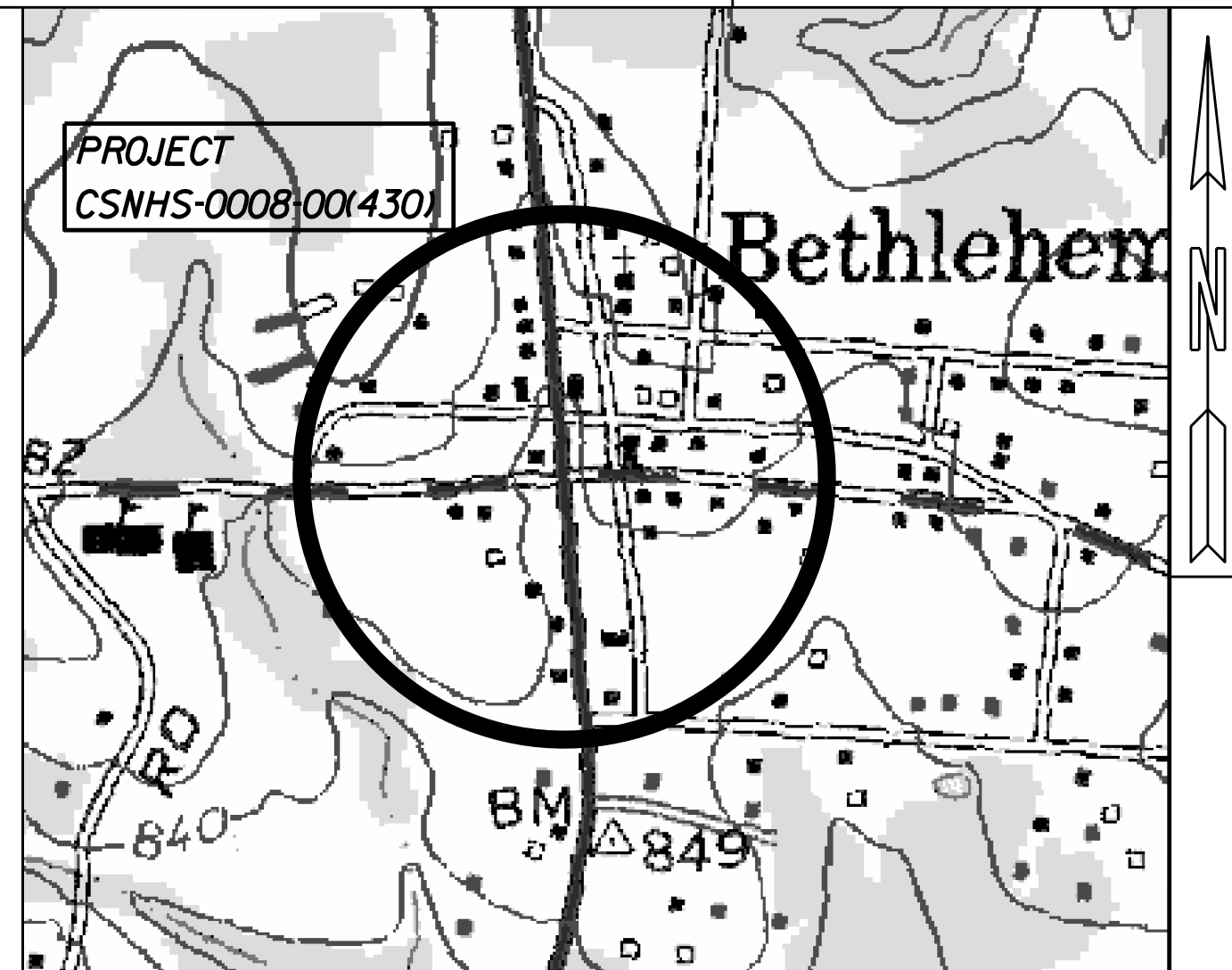
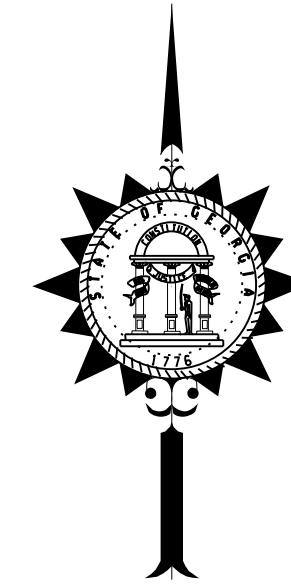


# DEPARTMENT OF TRANSPORTATION STATE OF GEORGIA

## PLAN AND PROFILE OF PROPOSED SR 316/US 29 @ SR 11 INTERCHANGE



LOCATION SKETCH

DESIGN DATA: SR 316 SR 11  
 TRAFFIC A.D.T.: 30,000 (2020) 14,500  
 TRAFFIC A.D.T.: 44,600 (2040) 21,450  
 TRAFFIC D.H.V.: 1,490 (ONE WAY) 815  
 DIRECTIONAL DIST: 52/48 57/43  
 % TRUCKS: 7.0% 7.5%  
 24 HR. TRUCKS %: 9.0% 10.0%  
 SPEED DESIGN: SR 316 65 MPH  
 SR 11 55 MPH  
 RAMPS 45 MPH  
 ACCESS RDS 25 MPH

LOCATION & DESIGN APPROVAL DATE:  
 FUNCTIONAL CLASS:  
 SR 316 - RURAL PRINCIPAL ARTERIAL  
 SR 11 - RURAL MINOR ARTERIAL

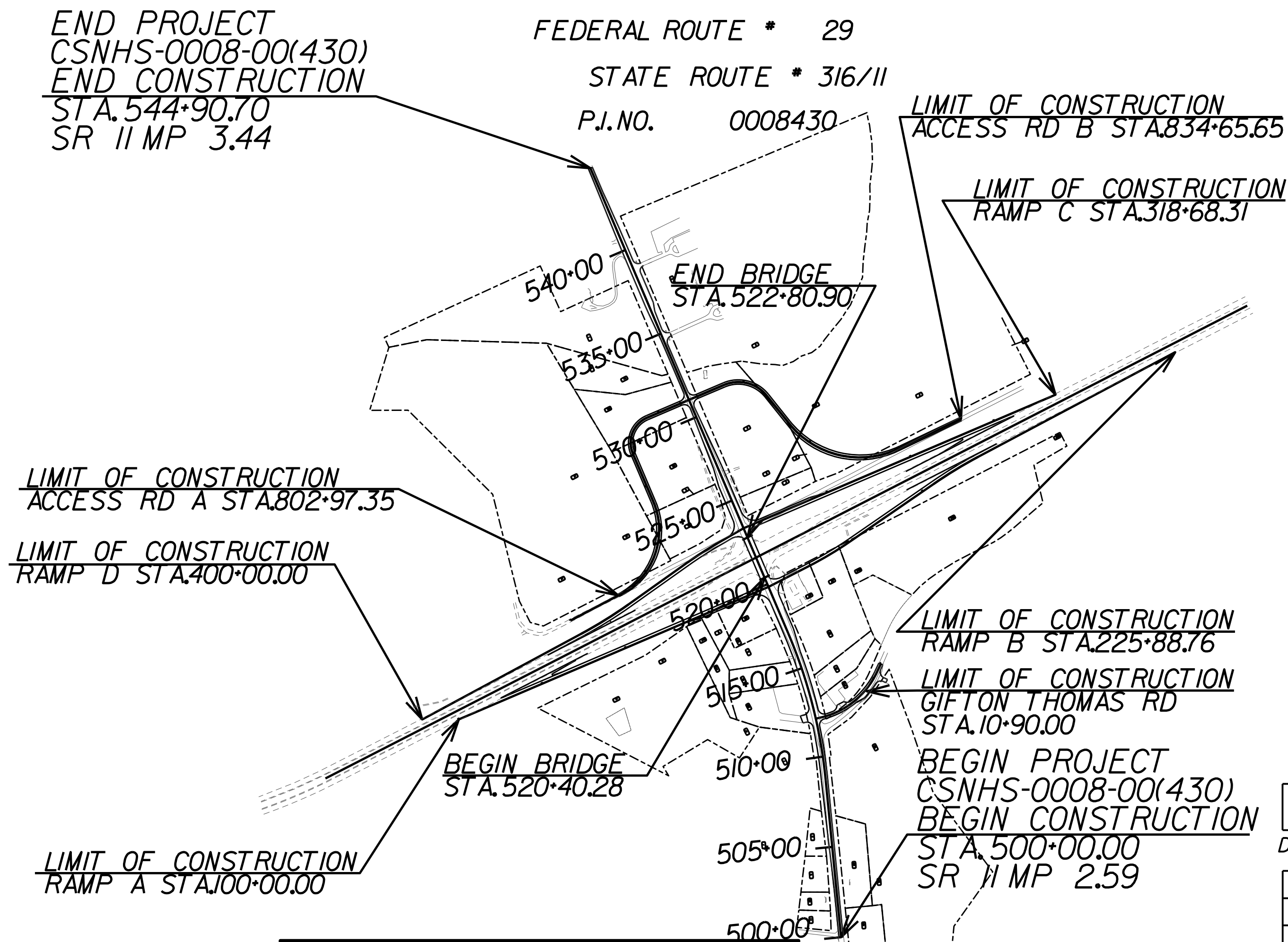
THIS PROJECT IS 100% IN BARROW COUNTY AND IS 100% IN CONG. DIST. NO. 10.

PROJECT DESIGNATION:  
 DESIGNED IN ENGLISH UNITS.

THIS PROJECT HAS BEEN PREPARED USING THE HORIZONTAL GEORGIA COORDINATE SYSTEM OF 1984 (NAD 1983/94 WEST ZONE, AND THE NORTH AMERICAN VERTICAL DATUM (NAVD) OF 1988.

THE DATA TOGETHER WITH ALL OTHER INFORMATION SHOWN ON THESE PLANS OR IN ANYWAY INDICATED THEREBY, WHETHER BY DRAWINGS OR NOTES, OR IN ANY OTHER MANNER, ARE BASED UPON FIELD INVESTIGATIONS AND ARE BELIEVED TO BE INDICATIVE OF ACTUAL CONDITIONS. HOWEVER, THE SAME ARE SHOWN AS INFORMATION ONLY, ARE NOT GUARANTEED, AND DO NOT BIND THE DEPARTMENT OF TRANSPORTATION IN ANY WAY. THE ATTENTION OF BIDDER IS SPECIFICALLY DIRECTED TO SUBSECTIONS 102.04, 102.05, AND 104.03 OF THE SPECIFICATIONS.

FEDERAL AID PROJECT  
 CSNHS-0008-00(430)



PREPARED BY: \_\_\_\_\_  
 DESIGN ENGINEER

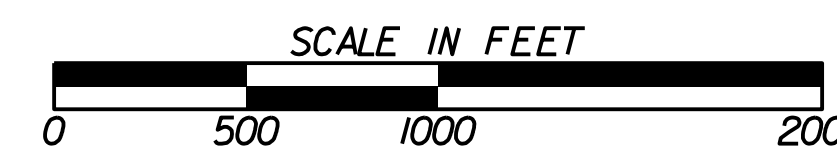
RECOMMENDED FOR SUBMISSION BY: \_\_\_\_\_  
 DESIGN GROUP MANAGER

SUBMITTED BY: \_\_\_\_\_  
 STATE ROADWAY DESIGN ENGINEER

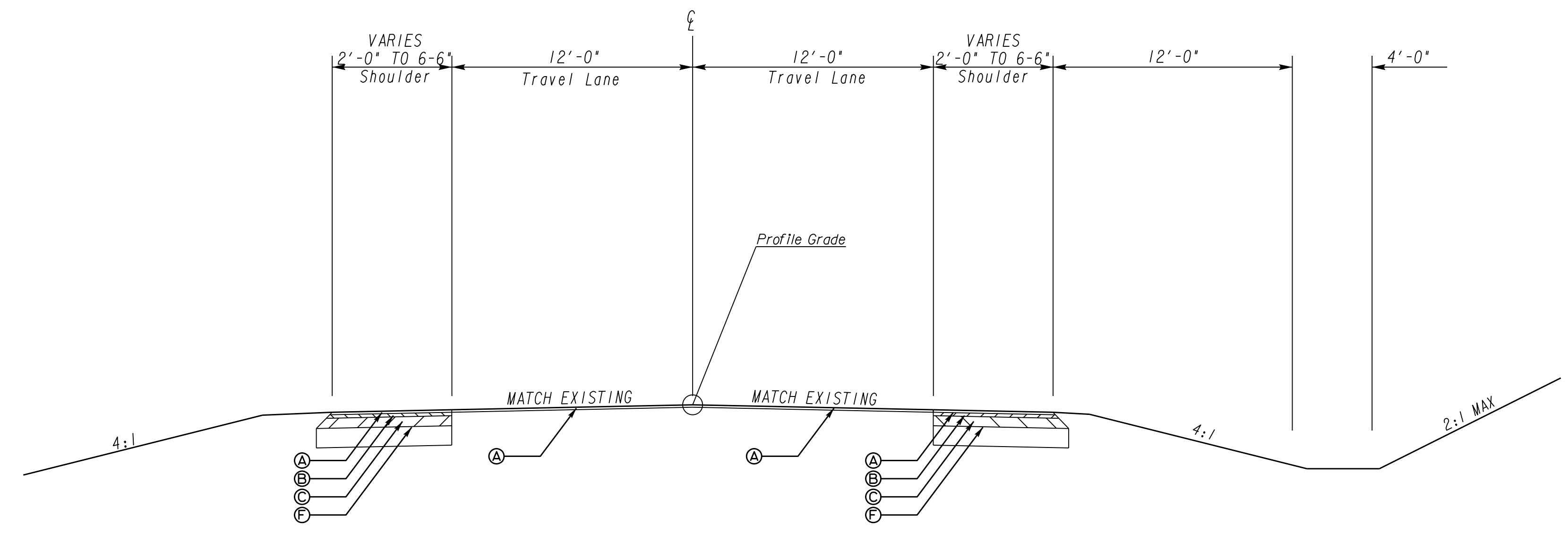
DATE \_\_\_\_\_  
 CHIEF ENGINEER

PLANS COMPLETED	- -
REVISIONS	

LENGTH OF PROJECT	COUNTY No. 3 BARROW Project No. CSNHS-0008-00(430)
	MILES
NET LENGTH OF ROADWAY	0.806
NET LENGTH OF BRIDGES	0.045
NET LENGTH OF PROJECT	0.851
NET LENGTH OF EXCEPTIONS	0.000
GROSS LENGTH OF PROJECT	0.851

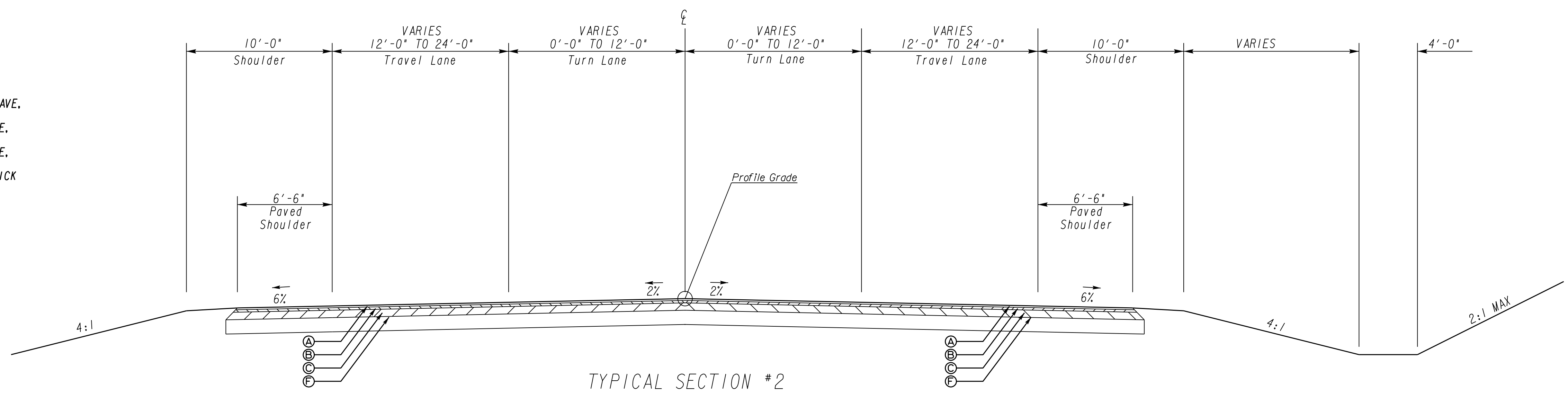


DRAWING No.  
 01-0001



**TYPICAL SECTION #1**  
**TANGENT SECTION**  
 SR 11  
 STA 500+00.00 TO STA 501+50.00  
 STA 544+50.00 TO STA 544+90.70  
 GIFTON THOMAS ROAD  
 STA 10+86.71 TO STA 11+01.00

- Ⓐ 165 LB/SY RECYCLED ASPH CONC. 12.5 MM SUPERPAVE, GP 2 ONLY, INCL BITUM MATL & H LIME
- Ⓑ 220 LB/SY RECYCLED ASPH CONC. 19 MM SUPERPAVE, GP 1 OR 2 ONLY, INCL BITUM MATL & H LIME
- Ⓒ 770 LB/SY RECYCLED ASPH CONC. 25 MM SUPERPAVE, GP 1 OR 2 ONLY, INCL BITUM MATL & H LIME
- Ⓓ PLAIN PC CONC PVMT, CL 1 CONC, 10.5 INCH THICK
- Ⓔ 10 IN GR AGGR BASE CRS, INCL MATL
- Ⓕ 12 IN GR AGGR BASE CRS, INCL MATL



**TYPICAL SECTION #2**  
**TANGENT SECTION**  
 SR 11  
 STA 501+50.00 TO STA 506+68.15  
 STA 518+91.33 TO STA 519+01.89  
 STA 524+23.29 TO STA 544+50.00

SLOPE CONTROLS		
SLOPE	CUT	FILL
4:1	—	0-10'
2:1	ALL	OVER 10'

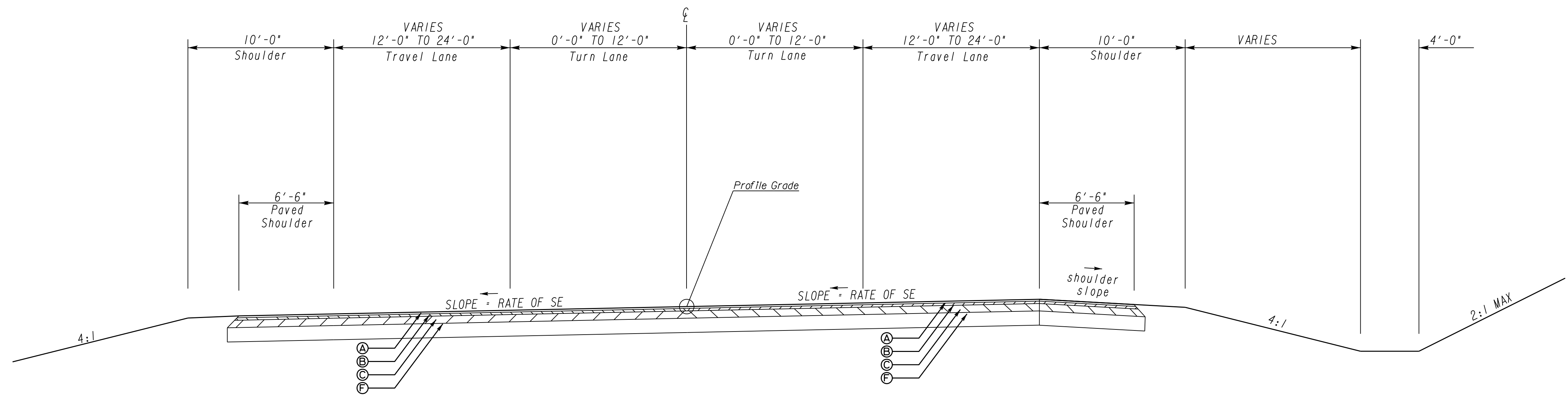
**GEORGIA**  
DEPARTMENT  
OF  
TRANSPORTATION

NO SCALE

REVISION DATES		

STATE OF GEORGIA  
 DEPARTMENT OF TRANSPORTATION  
 OFFICE: ROADWAY DESIGN  
**TYPICAL SECTIONS**  
 P. I. NO. 0008430

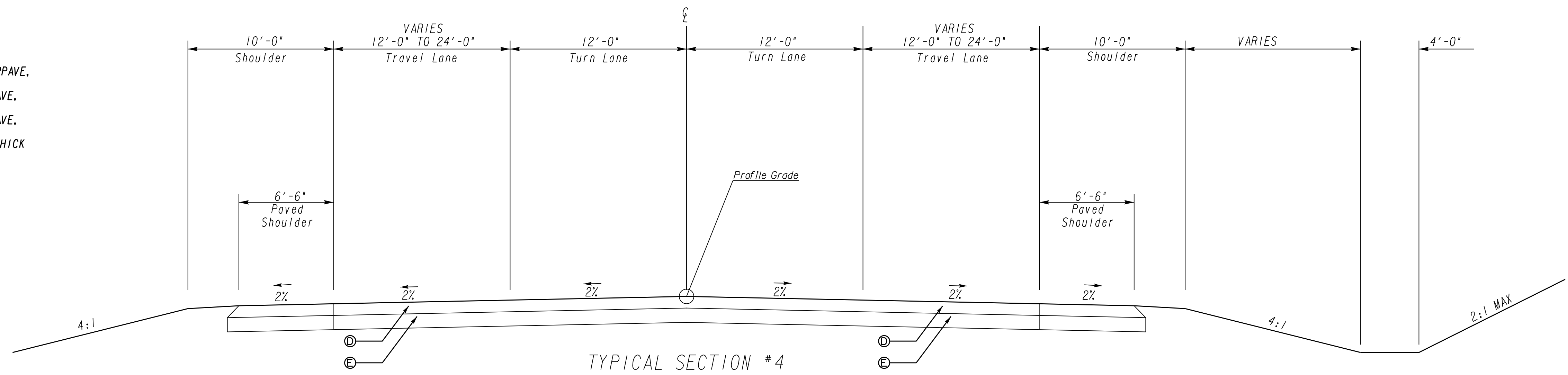
DRAWING No.  
**05-0001**



S. E. RATE	shoulder slope
2.0% OR 3.0%	4.0%
4.0% OR 5.0%	2.0%
6.0% OR 7.0%	1.0%
8.0% +	0.0%

TYPICAL SECTION #3  
SUPER ELEVATED SECTION  
SR 11  
\*SEE PLAN SHEETS FOR SUPERELEVATION RATES

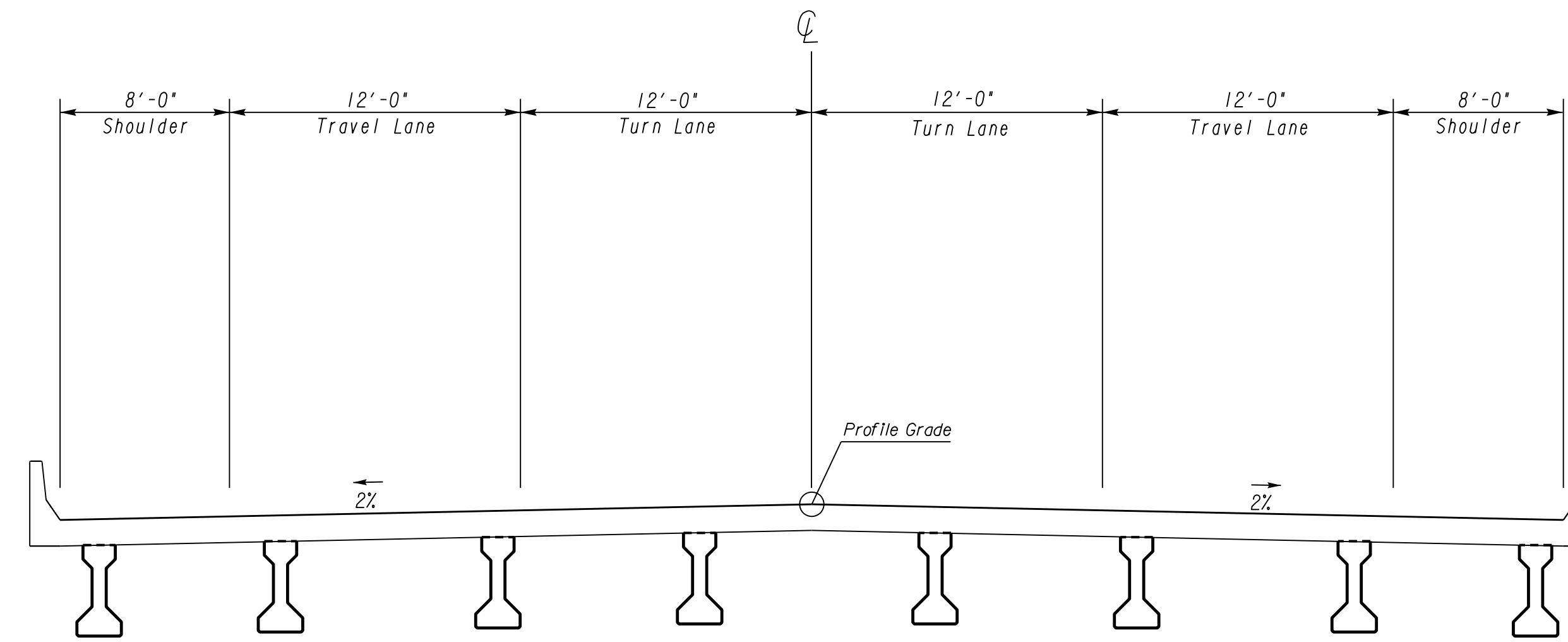
- Ⓐ 165 LB/SY RECYCLED ASPH CONC 12.5 MM SUPERPAVE, GP 2 ONLY, INCL BITUM MATL & H LIME
- Ⓑ 220 LB/SY RECYCLED ASPH CONC 19 MM SUPERPAVE, GP 1 OR 2 ONLY, INCL BITUM MATL & H LIME
- Ⓒ 770 LB/SY RECYCLED ASPH CONC 25 MM SUPERPAVE, GP 1 OR 2 ONLY, INCL BITUM MATL & H LIME
- Ⓓ PLAIN PC CONC PVMT, CL 1 CONC, 10.5 INCH THICK
- Ⓔ 10 IN GR AGGR BASE CRS, INCL MATL
- Ⓕ 12 IN GR AGGR BASE CRS, INCL MATL



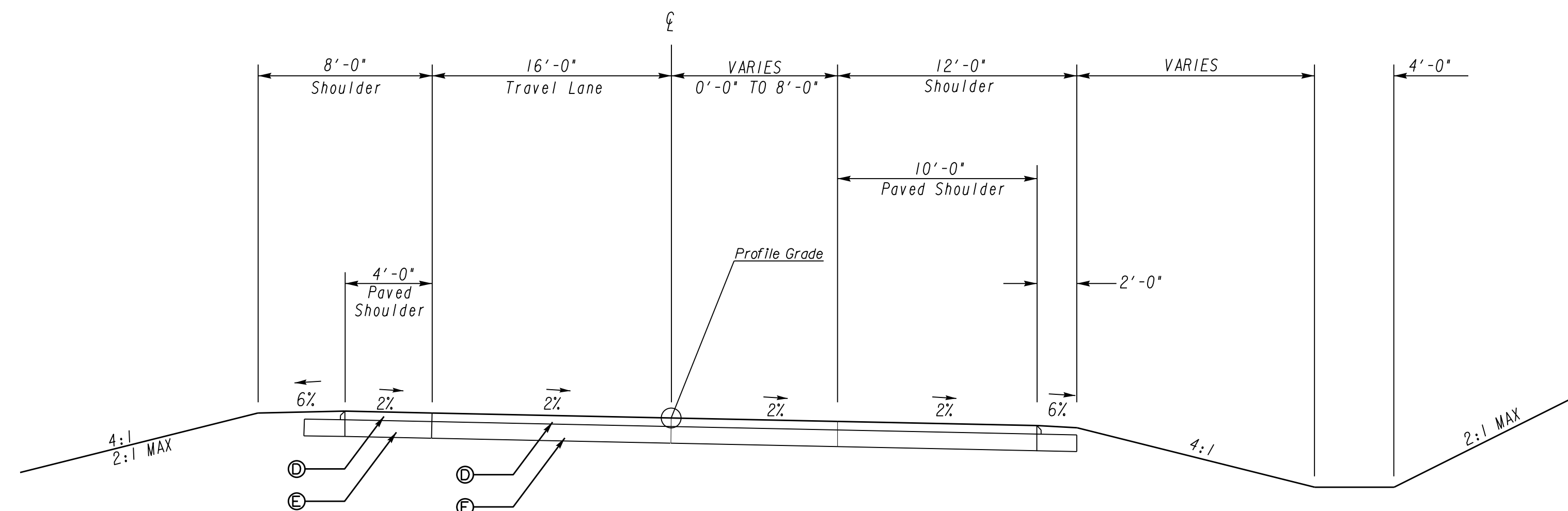
TYPICAL SECTION #4  
TANGENT SECTION  
SR 11  
STA 519+01.89 TO STA 520+40.28  
STA 522+80.90 TO STA 524+23.29

SLOPE CONTROLS		
SLOPE	CUT	FILL
4:1	—	0-10'
2:1	ALL	OVER 10'

<b>GEORGIA</b> DEPARTMENT OF TRANSPORTATION	NO SCALE	REVISION DATES <table border="1" style="width: 100%; border-collapse: collapse;"> <tr><td> </td><td> </td><td> </td></tr> <tr><td> </td><td> </td><td> </td></tr> <tr><td> </td><td> </td><td> </td></tr> <tr><td> </td><td> </td><td> </td></tr> <tr><td> </td><td> </td><td> </td></tr> </table>																STATE OF GEORGIA DEPARTMENT OF TRANSPORTATION OFFICE: ROADWAY DESIGN <b>TYPICAL SECTIONS</b> P. I. NO. 0008430 DRAWING No. <b>05-0002</b>



TYPICAL SECTION #3  
BRIDGE SECTION  
SR 11  
STA 520+40.28 TO STA 522+80.90



TYPICAL SECTION #6  
TANGENT SECTION

- RAMP A  
STA 100+00.00 TO STA 118+55.60
- RAMP B  
STA 200+00.00 TO STA 200+82.08  
STA 206+83.86 TO STA 210+67.24  
STA 214+16.01 TO STA 225+88.76
- RAMP C  
STA 300+00.00 TO STA 318+68.31
- RAMP D  
STA 400+00.00 TO STA 409+56.66  
STA 413+28.65 TO STA 415+65.85  
STA 420+29.39 TO STA 420+61.71

- Ⓐ 165 LB/SY RECYCLED ASPH CONC 12.5 MM SUPERPAVE, GP 2 ONLY, INCL BITUM MATL & H LIME
- Ⓑ 220 LB/SY RECYCLED ASPH CONC 19 MM SUPERPAVE, GP 1 OR 2 ONLY, INCL BITUM MATL & H LIME
- Ⓒ 770 LB/SY RECYCLED ASPH CONC 25 MM SUPERPAVE, GP 1 OR 2 ONLY, INCL BITUM MATL & H LIME
- Ⓓ PLAIN PC CONC PVMT, CL 1 CONC, 10.5 INCH THICK
- Ⓔ 10 IN GR AGGR BASE CRS, INCL MATL
- Ⓕ 12 IN GR AGGR BASE CRS, INCL MATL

SLOPE CONTROLS		
SLOPE	CUT	FILL
4:1	—	0-10'
2:1	ALL	OVER 10'

**GEORGIA**  
DEPARTMENT  
OF  
TRANSPORTATION

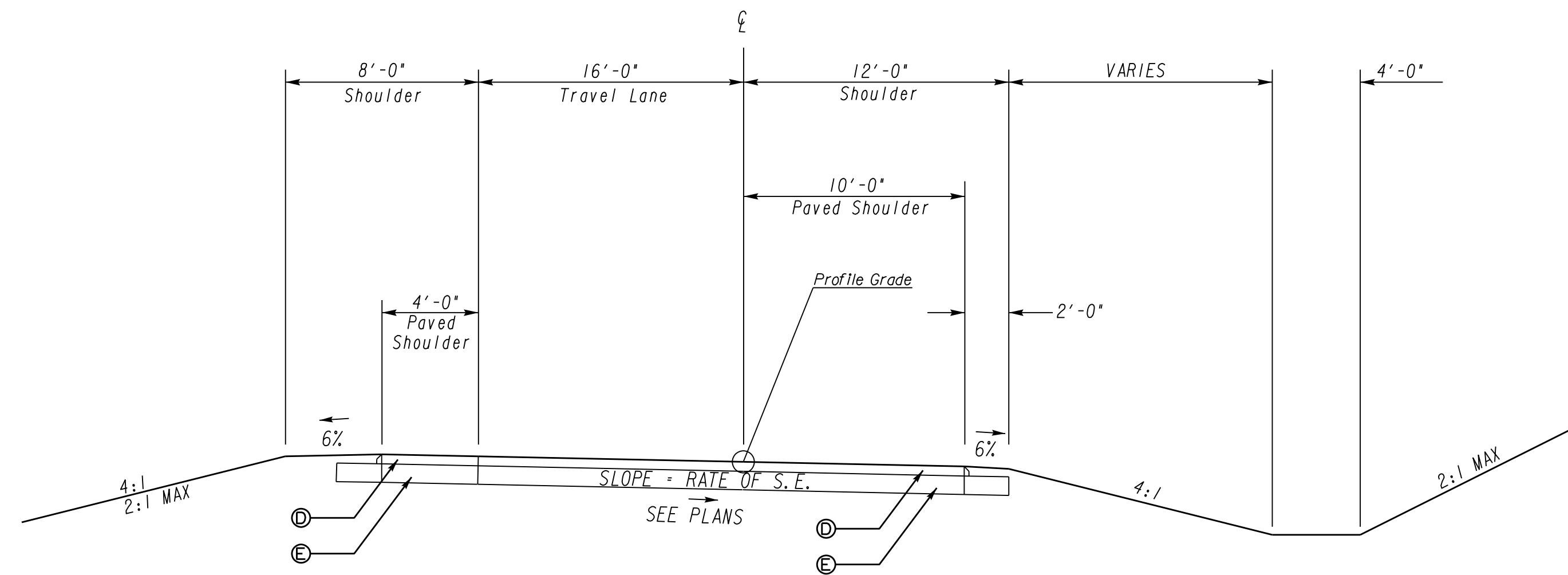
NO SCALE

REVISION DATES


STATE OF GEORGIA  
DEPARTMENT OF TRANSPORTATION  
OFFICE: ROADWAY DESIGN  
**TYPICAL SECTIONS**

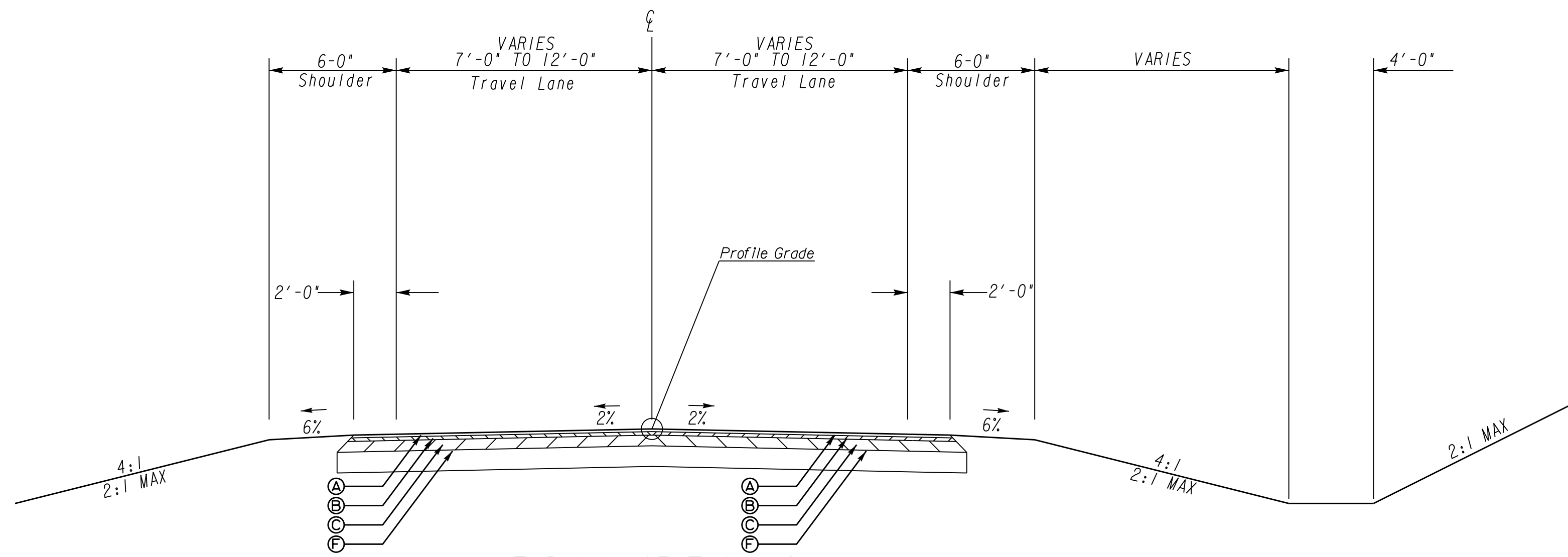
P. I. NO. 0008430

DRAWING No.  
**05-0003**



TYPICAL SECTION #7  
SUPER ELEVATED SECTION  
RAMPS B & D  
\*SEE PLAN SHEETS FOR SUPERELEVATION RATES

- Ⓐ 165 LB/SY RECYCLED ASPH CONC 12.5 MM SUPERPAVE. GP 2 ONLY. INCL BITUM MATL & H LIME
- Ⓑ 220 LB/SY RECYCLED ASPH CONC 19 MM SUPERPAVE. GP 1 OR 2 ONLY. INCL BITUM MATL & H LIME
- Ⓒ 770 LB/SY RECYCLED ASPH CONC 25 MM SUPERPAVE. GP 1 OR 2 ONLY. INCL BITUM MATL & H LIME
- Ⓓ PLAIN PC CONC PVMT, CL 1 CONC, 10.5 INCH THICK
- Ⓔ 10 IN GR AGGR BASE CRS, INCL MATL
- Ⓕ 12 IN GR AGGR BASE CRS, INCL MATL



TYPICAL SECTION #8  
TANGENT SECTION  
ACCESS ROAD A & B  
STA 802+97.35 TO STA 833+96.32  
GIFTON THOMAS ROAD  
STA 10+78.46 TO STA 10+90.00

SLOPE CONTROLS		
SLOPE	CUT	FILL
4:1	—	0-10'
2:1	ALL	OVER 10'

**GEORGIA**  
DEPARTMENT  
OF  
TRANSPORTATION

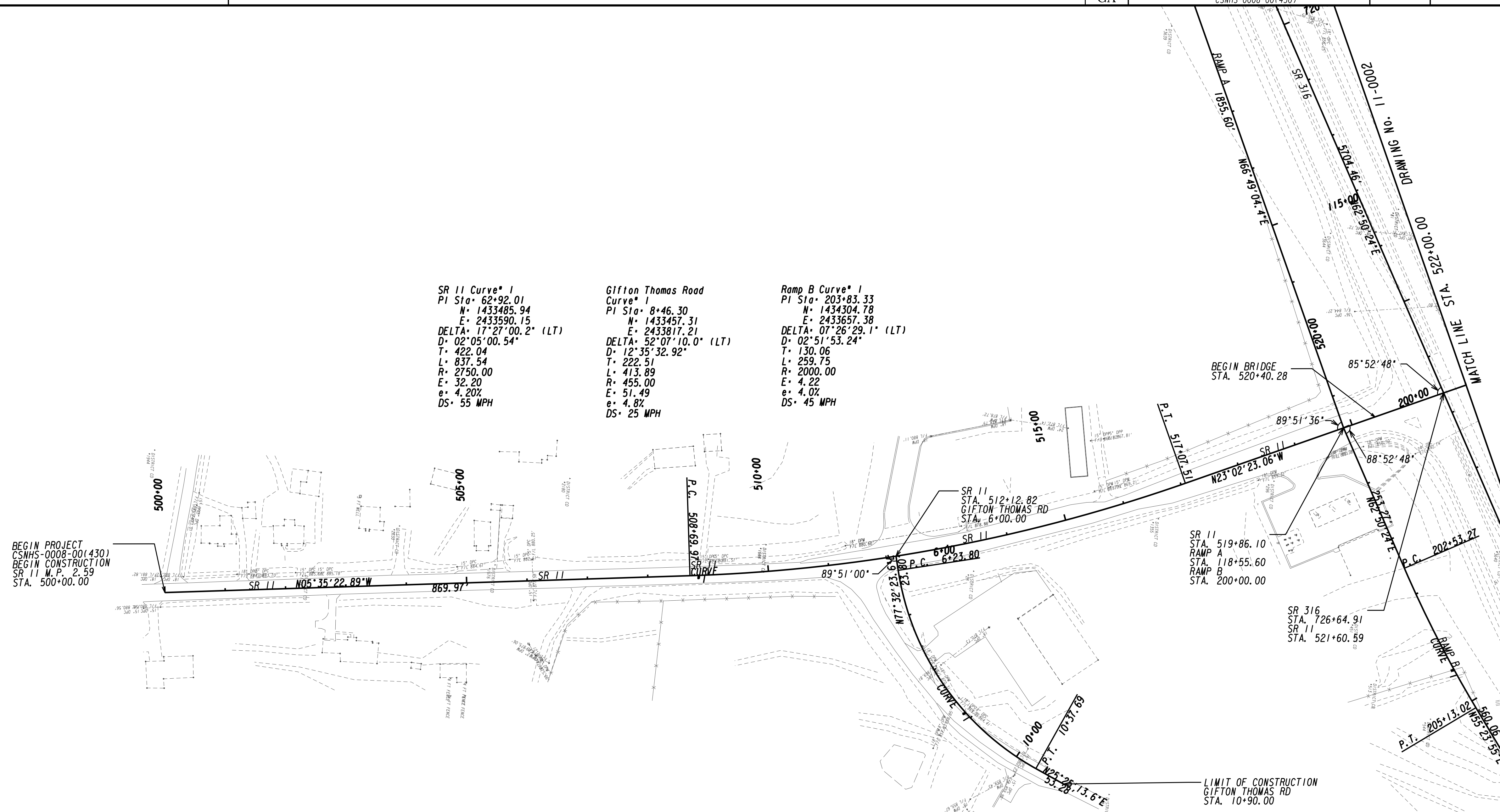
NO SCALE

REVISION DATES


STATE OF GEORGIA  
DEPARTMENT OF TRANSPORTATION  
OFFICE: ROADWAY DESIGN  
**TYPICAL SECTIONS**

P. I. NO. 0008430

DRAWING No.  
**05-0004**



SR 11 Curve\* 1  
 PI Sta. 62+92.01  
 N= 1433485.94  
 E= 2433590.15  
 DELTA= 17°27'00.2" (LT)  
 D= 02°05'00.54"  
 T= 422.04  
 L= 837.54  
 R= 2750.00  
 E= 32.20  
 e= 4.20%  
 DS= 55 MPH

Gifton Thomas Road  
 Curve\* 1  
 PI Sta. 8+46.30  
 N= 1433457.31  
 E= 2433817.21  
 DELTA= 52°07'10.0" (LT)  
 D= 12°35'32.92"  
 T= 222.51  
 L= 413.89  
 R= 455.00  
 E= 51.49  
 e= 4.8%  
 DS= 25 MPH

Ramp B Curve\* 1  
 PI Sta. 203+83.33  
 N= 1434304.78  
 E= 2433657.38  
 DELTA= 07°26'29.1" (LT)  
 D= 02°51'53.24"  
 T= 130.06  
 L= 259.75  
 R= 2000.00  
 E= 4.22  
 e= 4.0%  
 DS= 45 MPH

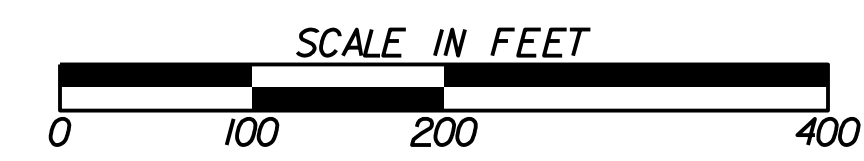
BEGIN PROJECT  
 CSNHS-0008-001(430)  
 BEGIN CONSTRUCTION  
 SR 11 M.P. 2.59  
 STA. 500+00.00

SR 11  
 STA. 519+86.10  
 RAMP A  
 STA. 118+55.60  
 RAMP B  
 STA. 200+00.00

SR 316  
 STA. 726+64.91  
 SR 11  
 STA. 521+60.59

LIMIT OF CONSTRUCTION  
 GIFTON THOMAS RD  
 STA. 10+90.00

**GEORGIA**  
 DEPARTMENT  
 OF  
 TRANSPORTATION

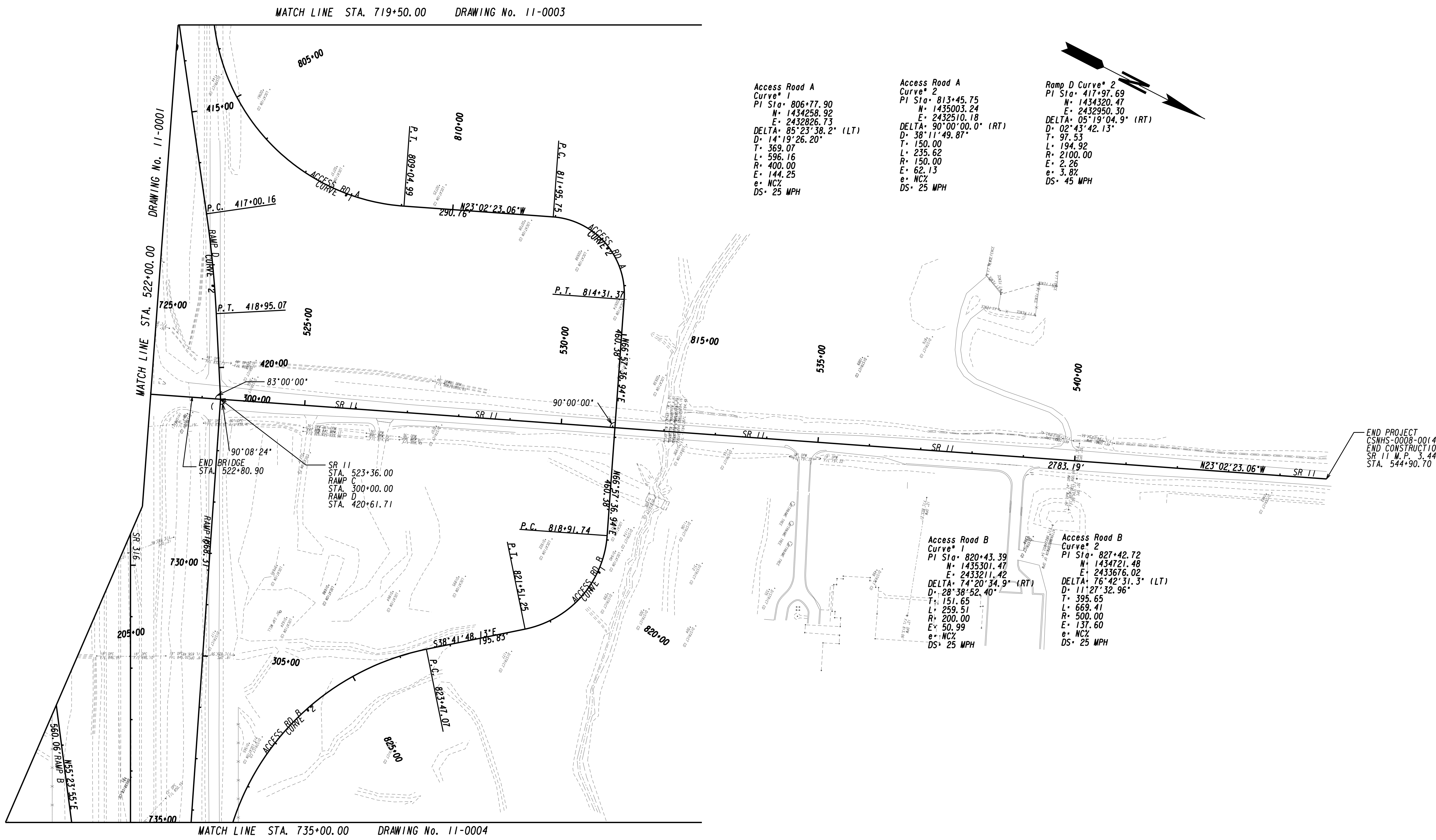


REVISION DATES

STATE OF GEORGIA  
 DEPARTMENT OF TRANSPORTATION  
 OFFICE: ROADWAY DESIGN  
**CONSTRUCTION LAYOUT**

SR 316 @ SR 11 INTERCHANGE

DRAWING No.  
**11-0001**



**Access Road A**  
 Curve\* 1  
 PI Sta. 806+77.90  
 N= 1434258.92  
 E= 2432826.73  
 DELTA: 85°23'38.2" (LT)  
 D= 14°19'26.20"  
 T= 369.07  
 L= 596.16  
 R= 400.00  
 E= 144.25  
 e= NC%  
 DS= 25 MPH

**Access Road A**  
 Curve\* 2  
 PI Sta. 813+45.75  
 N= 1435003.24  
 E= 2432510.18  
 DELTA: 90°00'00.0" (RT)  
 D= 38°11'49.87"  
 T= 150.00  
 L= 235.62  
 R= 150.00  
 E= 62.13  
 e= NC%  
 DS= 25 MPH

**Ramp D Curve\* 2**  
 PI Sta. 417+97.69  
 N= 1434320.47  
 E= 2432950.30  
 DELTA: 05°19'04.9" (RT)  
 D= 02°43'42.13"  
 T= 97.53  
 L= 194.92  
 R= 2100.00  
 E= 2.26  
 e= 3.8%  
 DS= 45 MPH

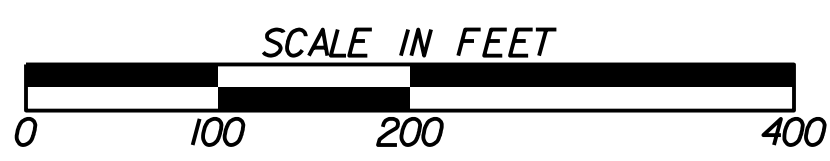
**Access Road B**  
 Curve\* 1  
 PI Sta. 820+43.39  
 N= 1435301.47  
 E= 2433211.42  
 DELTA: 74°20'34.9" (RT)  
 D= 28°38'52.40"  
 T= 151.65  
 L= 259.51  
 R= 200.00  
 E= 50.99  
 e= NC%  
 DS= 25 MPH

**Access Road B**  
 Curve\* 2  
 PI Sta. 827+42.72  
 N= 1434721.48  
 E= 2433676.02  
 DELTA: 76°42'31.3" (LT)  
 D= 11°27'32.96"  
 T= 395.65  
 L= 669.41  
 R= 500.00  
 E= 137.60  
 e= NC%  
 DS= 25 MPH

MATCH LINE STA. 719+50.00 DRAWING No. 11-0003

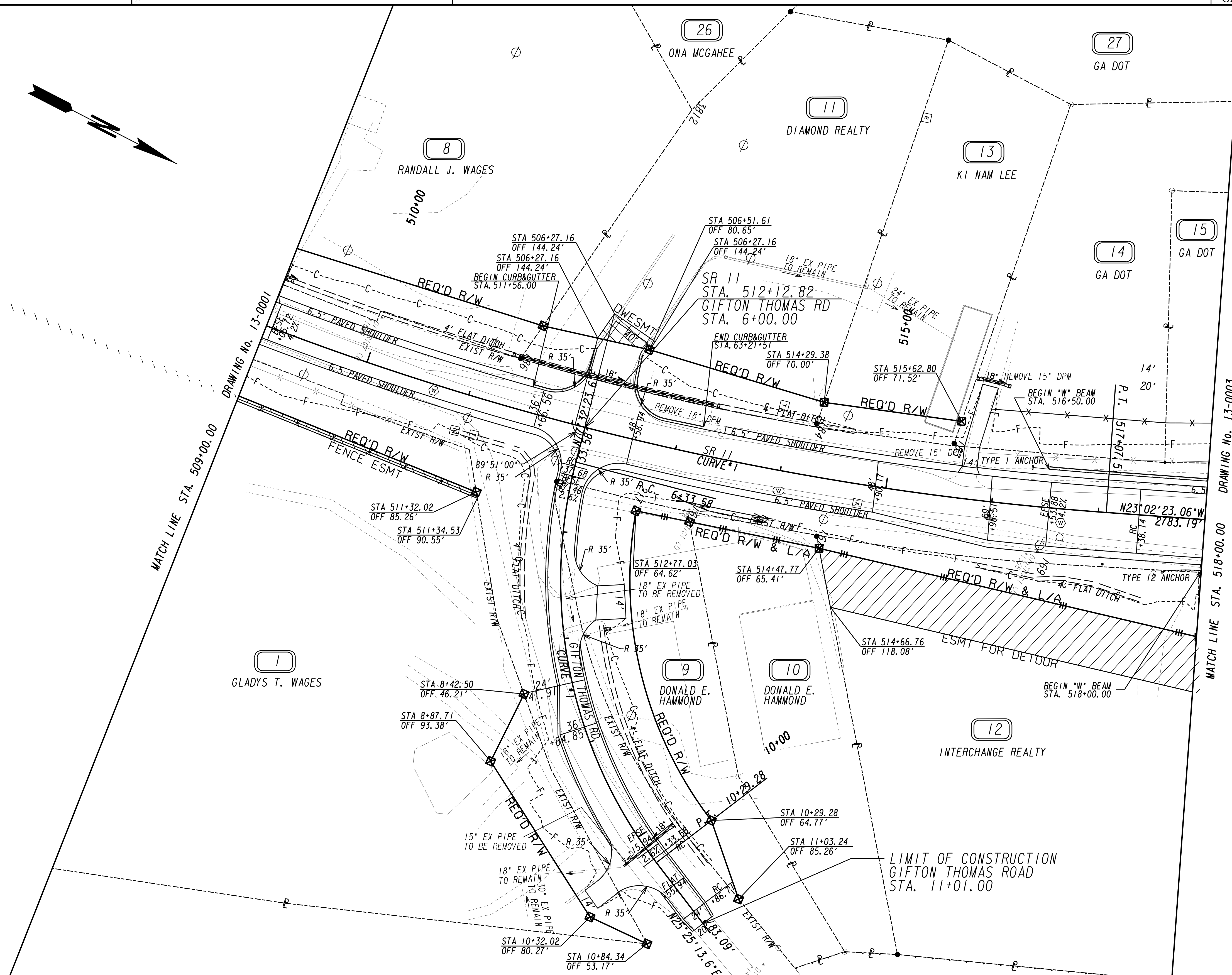
MATCH LINE STA. 735+00.00 DRAWING No. 11-0004

**GEORGIA**  
 DEPARTMENT  
 OF  
 TRANSPORTATION



REVISION DATES	

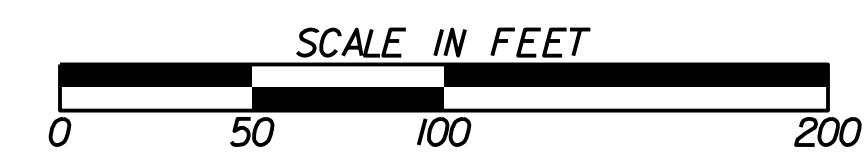
STATE OF GEORGIA  
 DEPARTMENT OF TRANSPORTATION  
 OFFICE: ROADWAY DESIGN  
**CONSTRUCTION LAYOUT**  
 SR 316 @ SR 11 INTERCHANGE  
 DRAWING No. 11-0002



PROPERTY AND EXISTING R/W LINE	---
REQUIRED R/W LINE	---
CONSTRUCTION LIMITS	---
EASEMENT FOR CONSTR & MAINTENANCE OF SLOPES	---
EASEMENT FOR CONSTR OF SLOPES	---
EASEMENT FOR CONSTR OF DRIVES	---

BEGIN LIMIT OF ACCESS.....BLA	---
END LIMIT OF ACCESS.....ELA	---
LIMIT OF ACCESS	---
REQ'D R/W & LIMIT OF ACCESS	---

**GEORGIA**  
 DEPARTMENT  
 OF  
 TRANSPORTATION



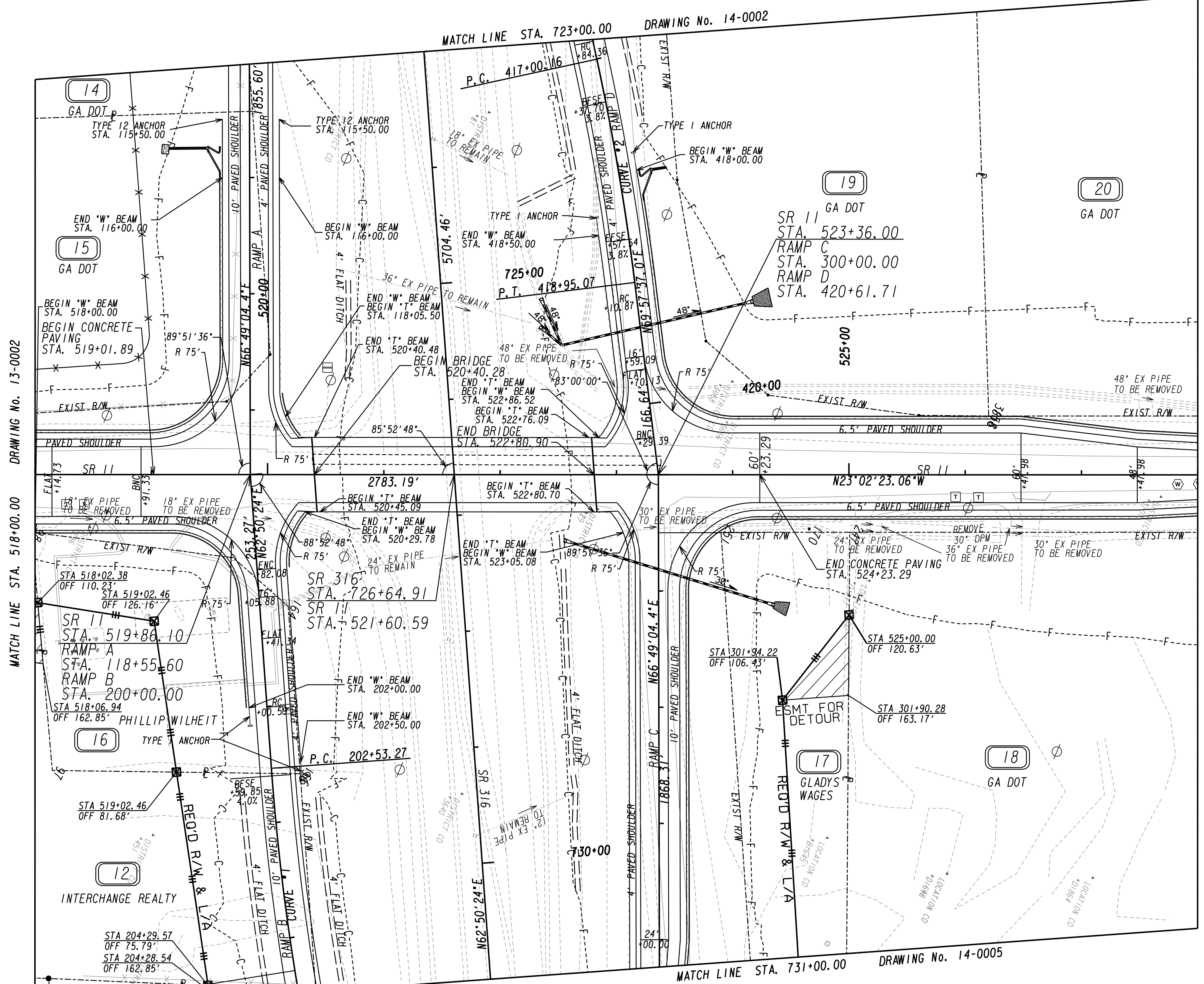
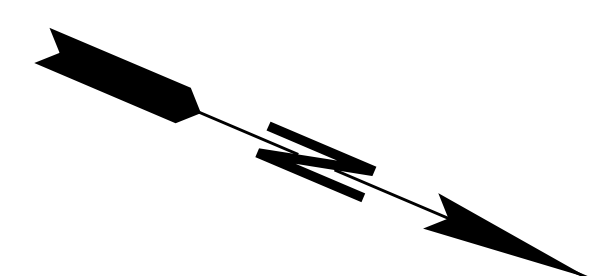
REVISION DATES		

STATE OF GEORGIA  
 DEPARTMENT OF TRANSPORTATION  
 OFFICE: ROADWAY DESIGN  
**MAINLINE PLAN**

SR 316 @ SR 11 INTERCHANGE

DRAWING No. **13-0002**

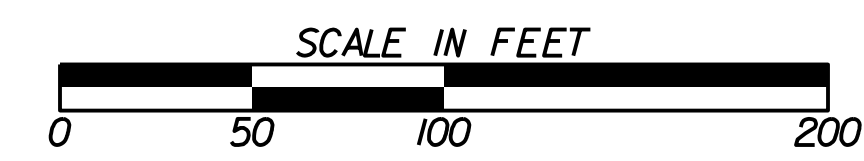




PROPERTY AND EXISTING R/W LINE	---
REQUIRED R/W LINE	---
CONSTRUCTION LIMITS	---
EASEMENT FOR CONSTR & MAINTENANCE OF SLOPES	▨
EASEMENT FOR CONSTR OF SLOPES	▩
EASEMENT FOR CONSTR OF DRIVES	▧

BEGIN LIMIT OF ACCESS.....	BLA
END LIMIT OF ACCESS.....	ELA
LIMIT OF ACCESS	---
REQ'D R/W & LIMIT OF ACCESS	---

**GEORGIA**  
 DEPARTMENT  
 OF  
 TRANSPORTATION

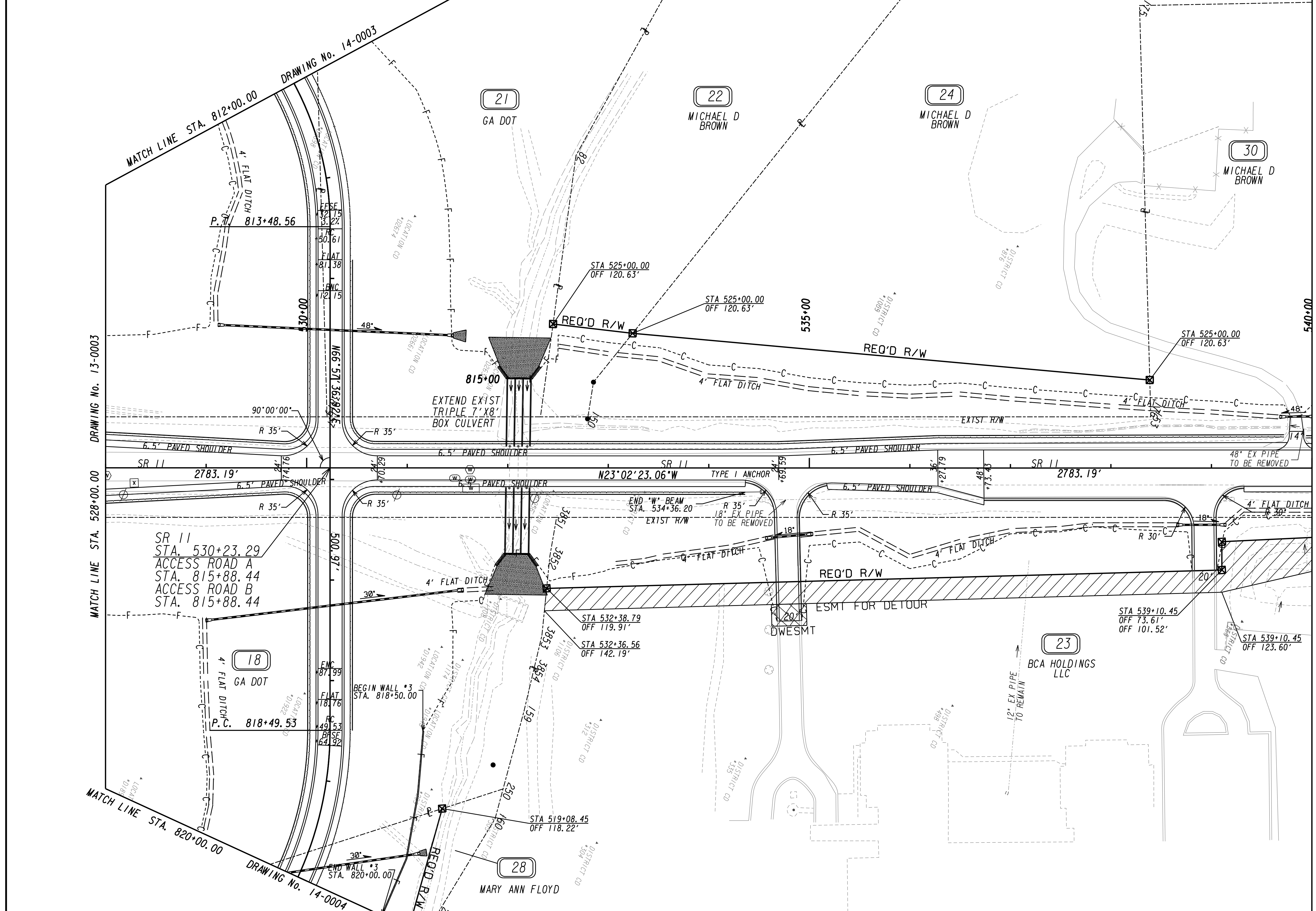


REVISION DATES		

STATE OF GEORGIA  
 DEPARTMENT OF TRANSPORTATION  
 OFFICE: ROADWAY DESIGN  
**MAINLINE PLAN**

SR 316 @ SR 11 INTERCHANGE

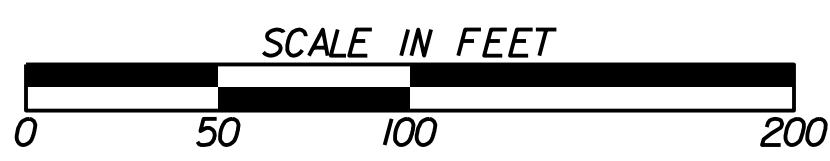
DRAWING No. 13-0003



PROPERTY AND EXISTING R/W LINE  
 REQUIRED R/W LINE  
 CONSTRUCTION LIMITS  
 EASEMENT FOR CONSTR  
 & MAINTENANCE OF SLOPES  
 EASEMENT FOR CONSTR OF SLOPES  
 EASEMENT FOR CONSTR OF DRIVES

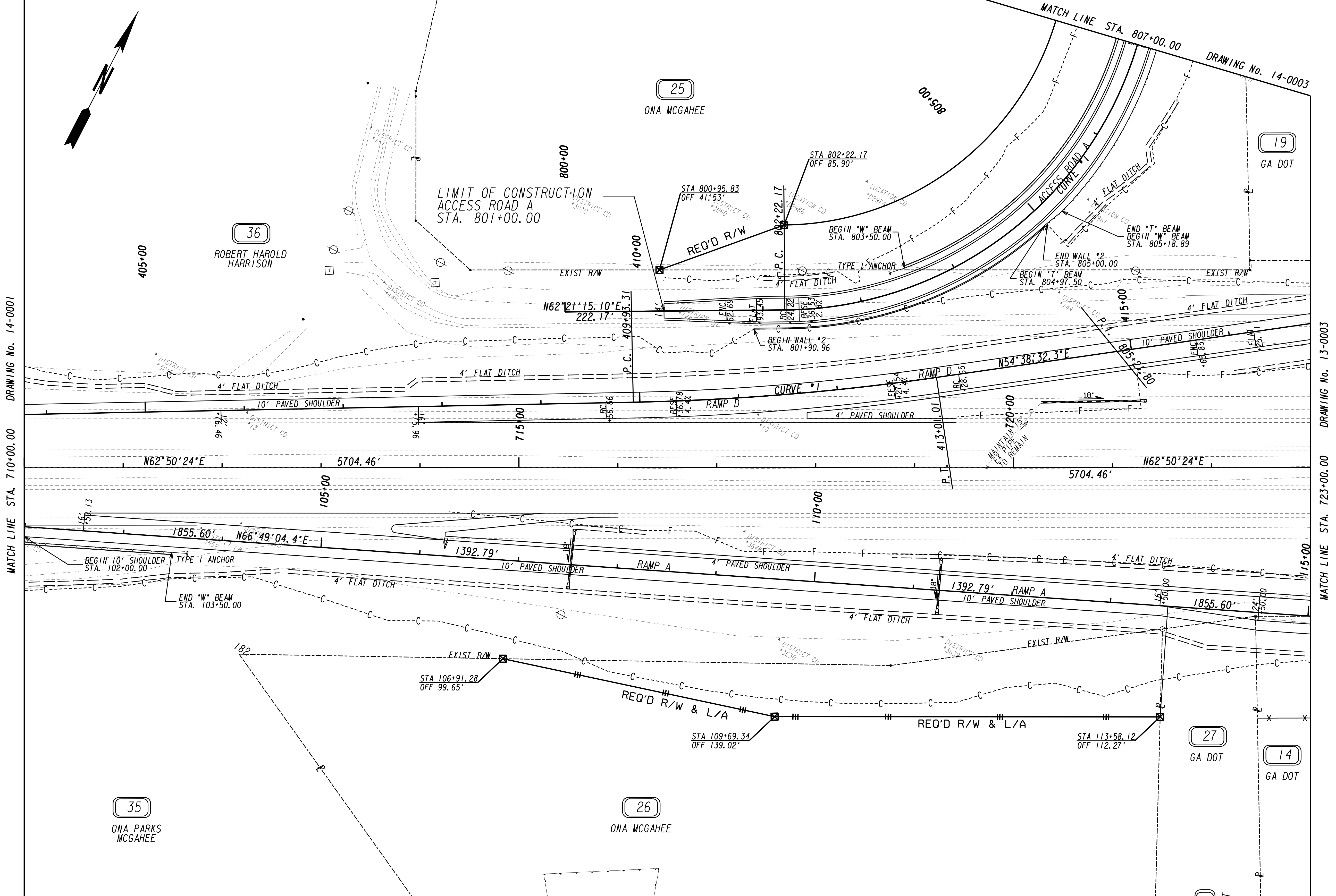
---@--- BEGIN LIMIT OF ACCESS.....BLA  
 ---C--- END LIMIT OF ACCESS.....ELA  
 ---F--- LIMIT OF ACCESS  
 [Hatched Box] REQ'D R/W & LIMIT OF ACCESS

**GEORGIA**  
 DEPARTMENT  
 OF  
 TRANSPORTATION



REVISION DATES	

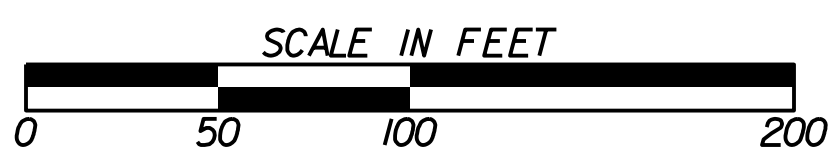
STATE OF GEORGIA  
 DEPARTMENT OF TRANSPORTATION  
 OFFICE: ROADWAY DESIGN  
**MAINLINE PLAN**  
 SR 316 @ SR 11 INTERCHANGE  
 DRAWING No. 13-0004



PROPERTY AND EXISTING R/W LINE  
 REQUIRED R/W LINE  
 CONSTRUCTION LIMITS  
 EASEMENT FOR CONSTR  
 & MAINTENANCE OF SLOPES  
 EASEMENT FOR CONSTR OF SLOPES  
 EASEMENT FOR CONSTR OF DRIVES

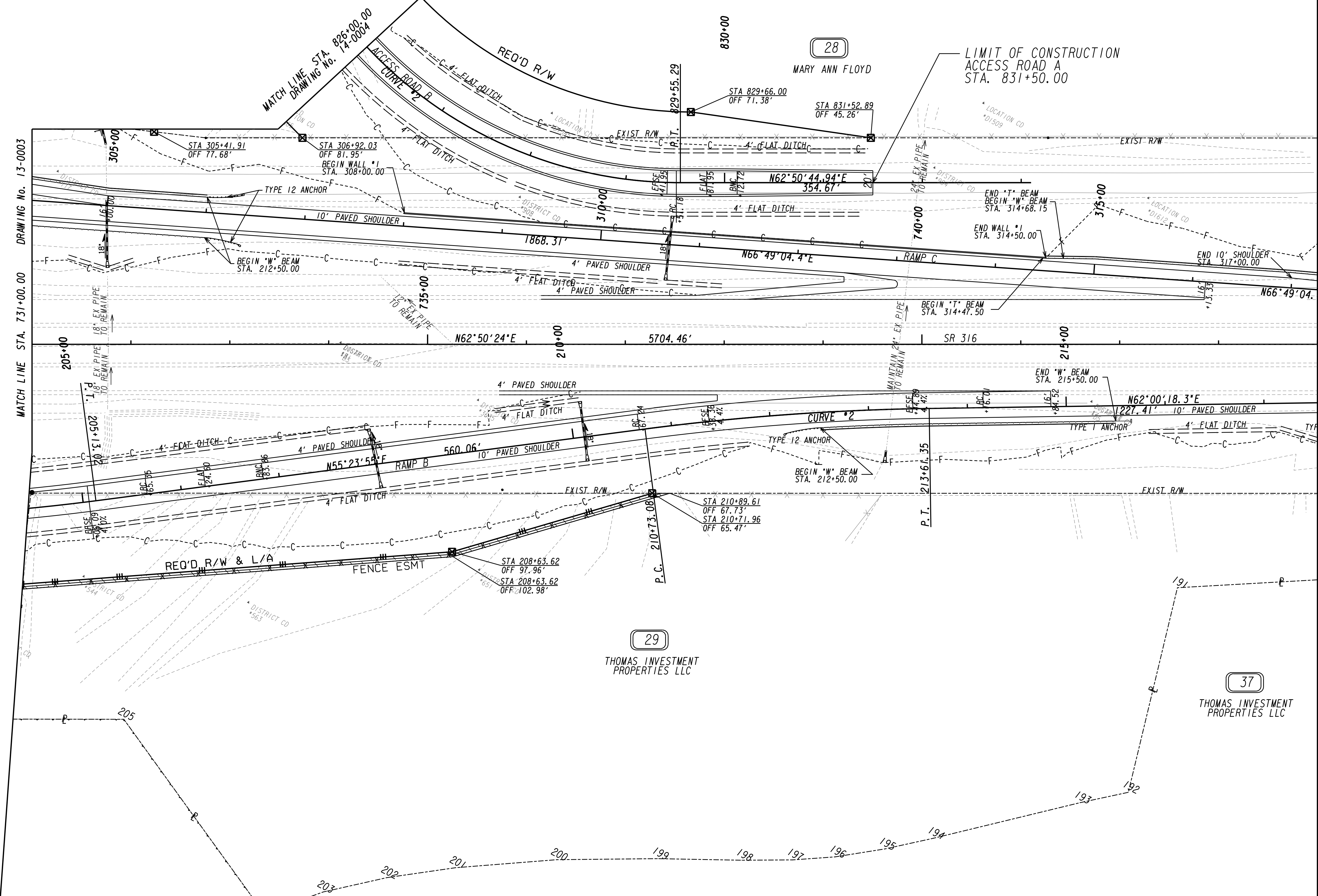
---@--- BEGIN LIMIT OF ACCESS.....BLA  
 ---C--- F--- END LIMIT OF ACCESS.....ELA  
 ---C--- F--- LIMIT OF ACCESS  
 ---X---X--- REQ'D R/W & LIMIT OF ACCESS

**GEORGIA**  
 DEPARTMENT  
 OF  
 TRANSPORTATION



REVISION DATES	

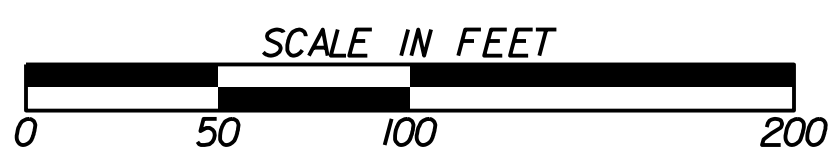
STATE OF GEORGIA  
 DEPARTMENT OF TRANSPORTATION  
 OFFICE: ROADWAY DESIGN  
**CROSSROAD PLAN**  
 SR 316 @ SR 11 INTERCHANGE  
 DRAWING No. 14-0002



PROPERTY AND EXISTING R/W LINE  
 REQUIRED R/W LINE  
 CONSTRUCTION LIMITS  
 EASEMENT FOR CONSTR  
 & MAINTENANCE OF SLOPES  
 EASEMENT FOR CONSTR OF SLOPES  
 EASEMENT FOR CONSTR OF DRIVES

---@--- BEGIN LIMIT OF ACCESS.....BLA  
 ---@--- END LIMIT OF ACCESS.....ELA  
 ---@--- LIMIT OF ACCESS  
 ---@--- REQ'D R/W & LIMIT OF ACCESS

**GEORGIA**  
 DEPARTMENT  
 OF  
 TRANSPORTATION

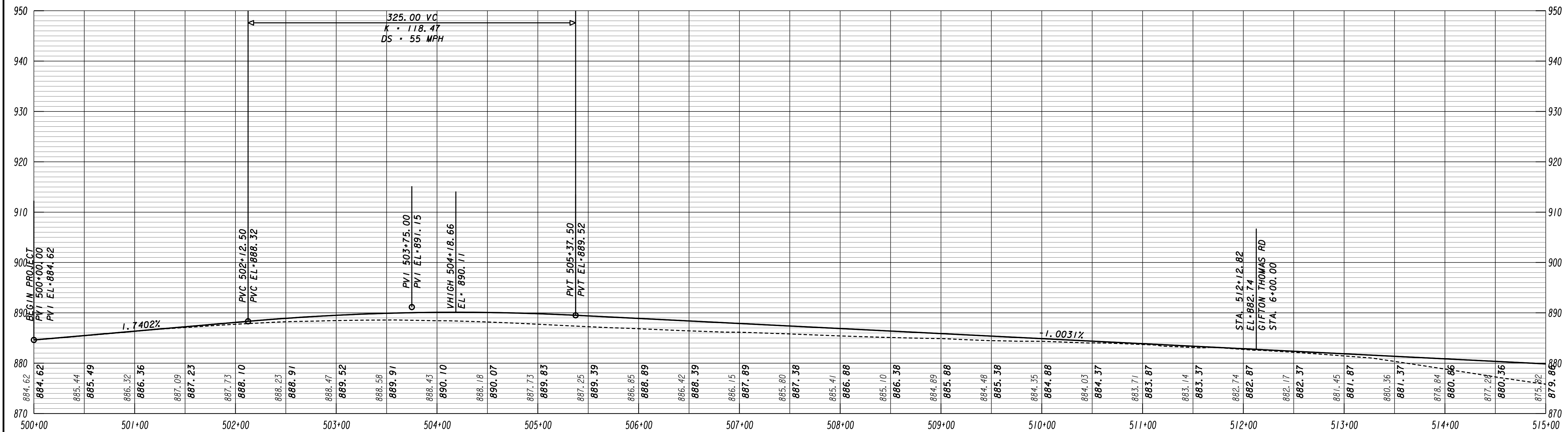
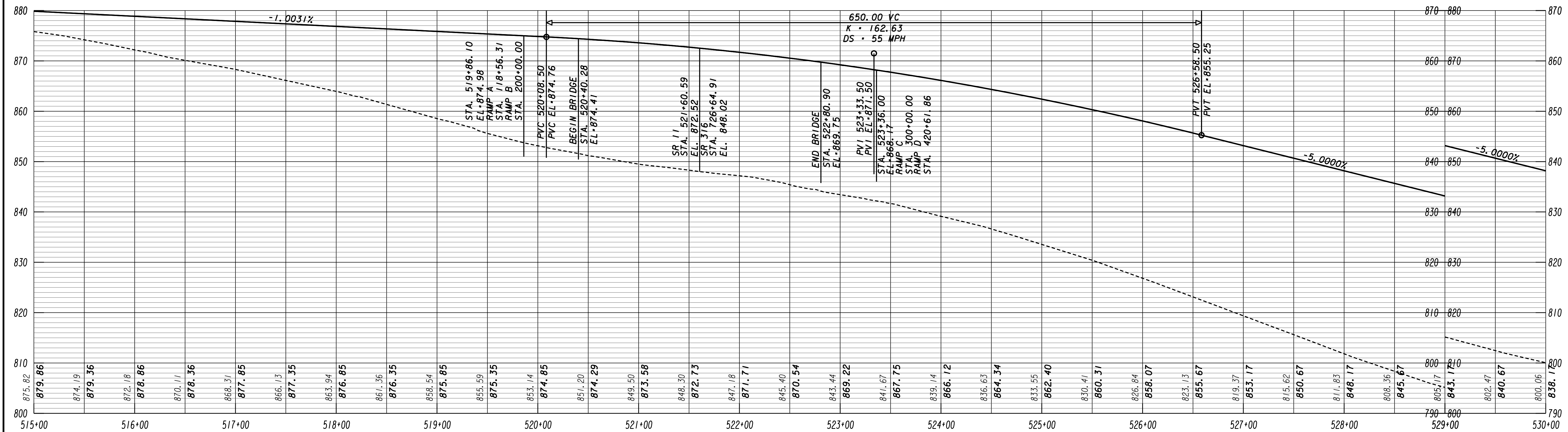


REVISION DATES	

STATE OF GEORGIA  
 DEPARTMENT OF TRANSPORTATION  
 OFFICE: ROADWAY DESIGN  
**CROSSROAD PLAN**  
 SR 316 @ SR 11 INTERCHANGE  
 DRAWING No. 14-0005

MATCH LINE STA. 731+00.00 DRAWING No. 13-0003

MATCH LINE STA. 744+00.00 DRAWING No. 14-0006



**GEORGIA**  
 DEPARTMENT  
 OF  
 TRANSPORTATION

1" = 50' HORIZ.  
 1" = 10' VERT.

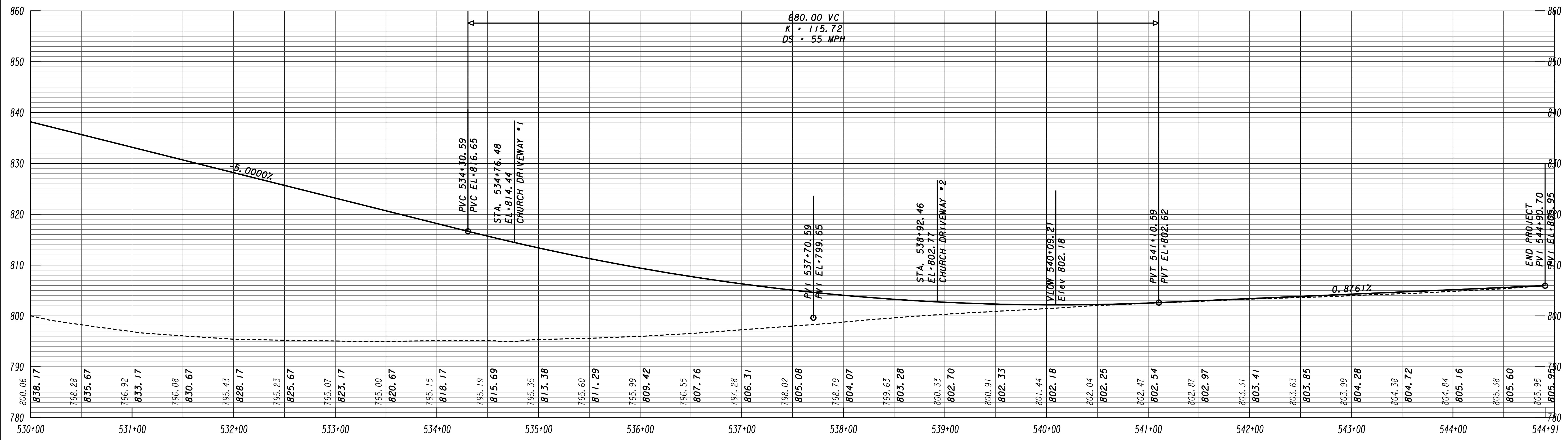
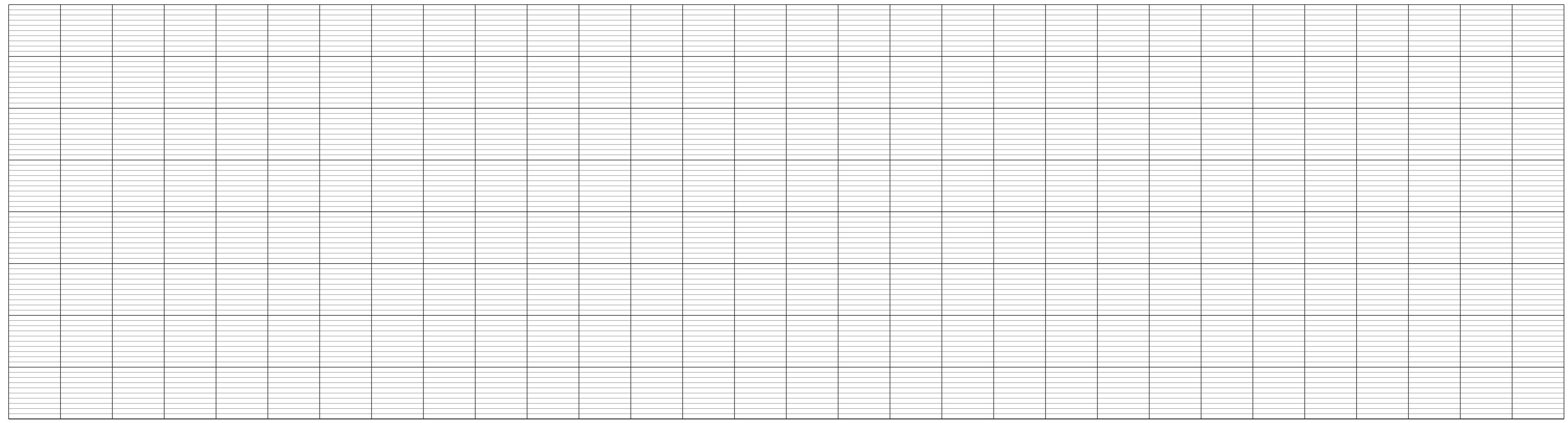
REVISION DATES

STATE OF GEORGIA  
 DEPARTMENT OF TRANSPORTATION  
 OFFICE: ROADWAY DESIGN

**MAINLINE PROFILE**

S. R. 11

DRAWING NO.  
**15-0001**



**GEORGIA**  
DEPARTMENT  
OF  
TRANSPORTATION

1" = 50' HORIZ.  
1" = 10' VERT.

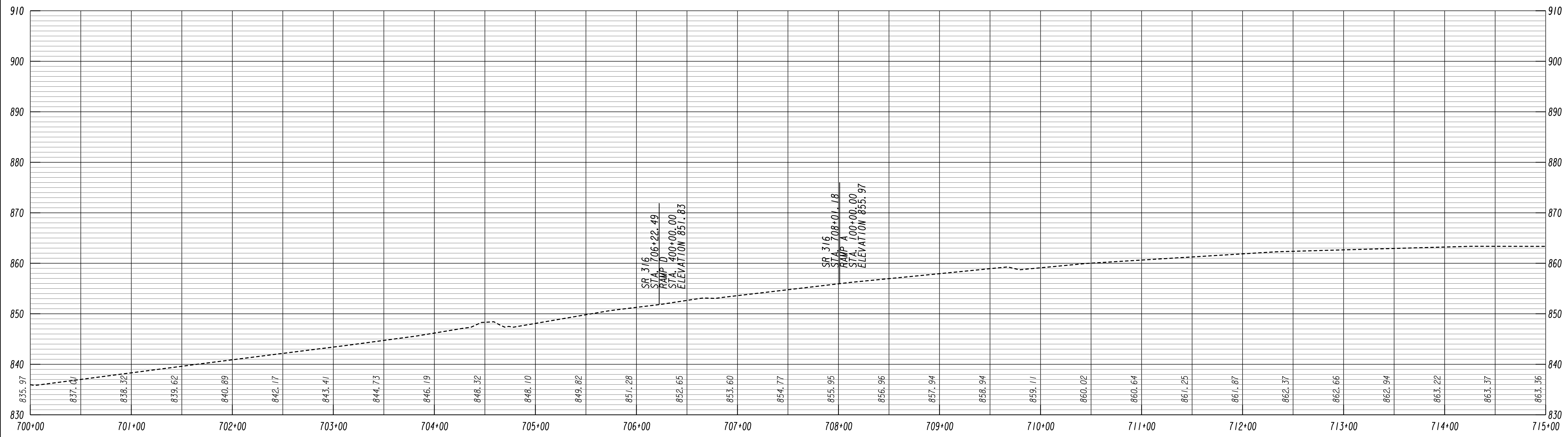
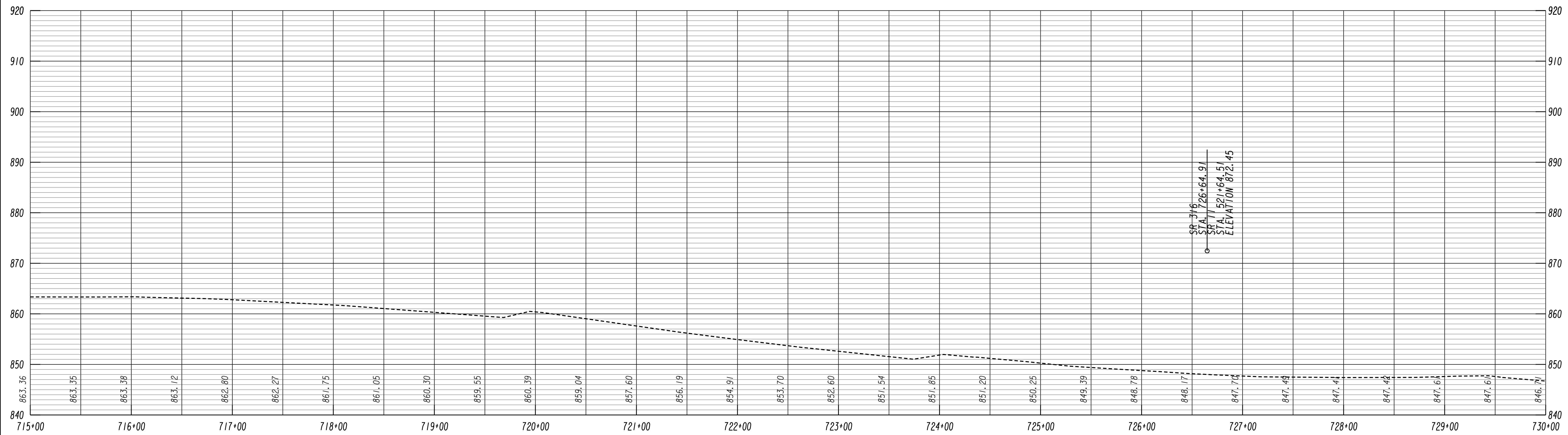
REVISION DATES

STATE OF GEORGIA  
DEPARTMENT OF TRANSPORTATION  
OFFICE: ROADWAY DESIGN

**MAINLINE PROFILE**

S. R. 11

DRAWING No.  
**15-0002**



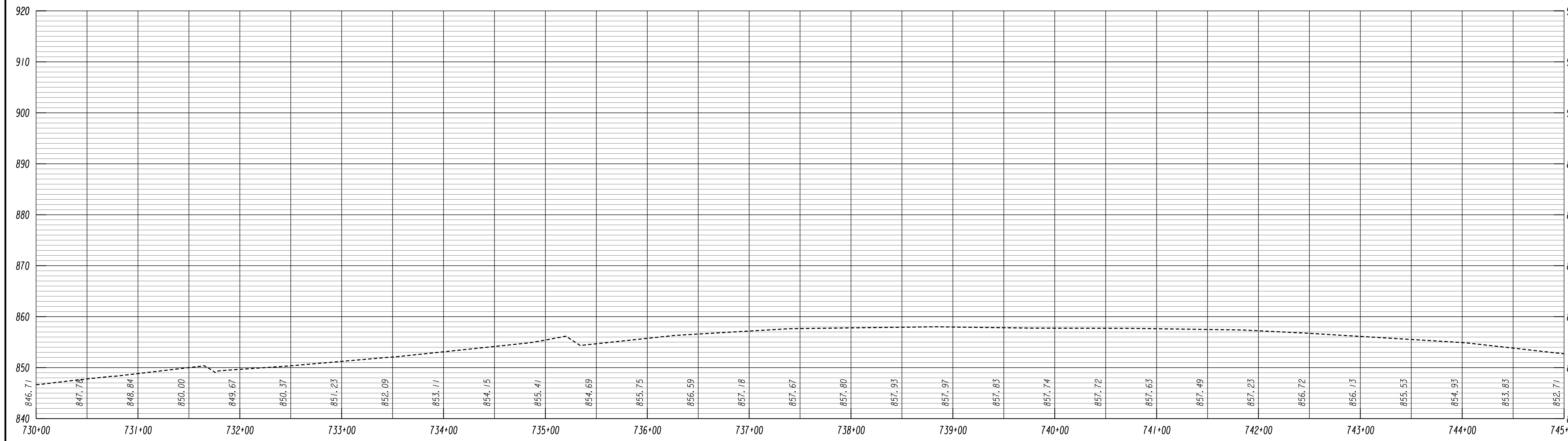
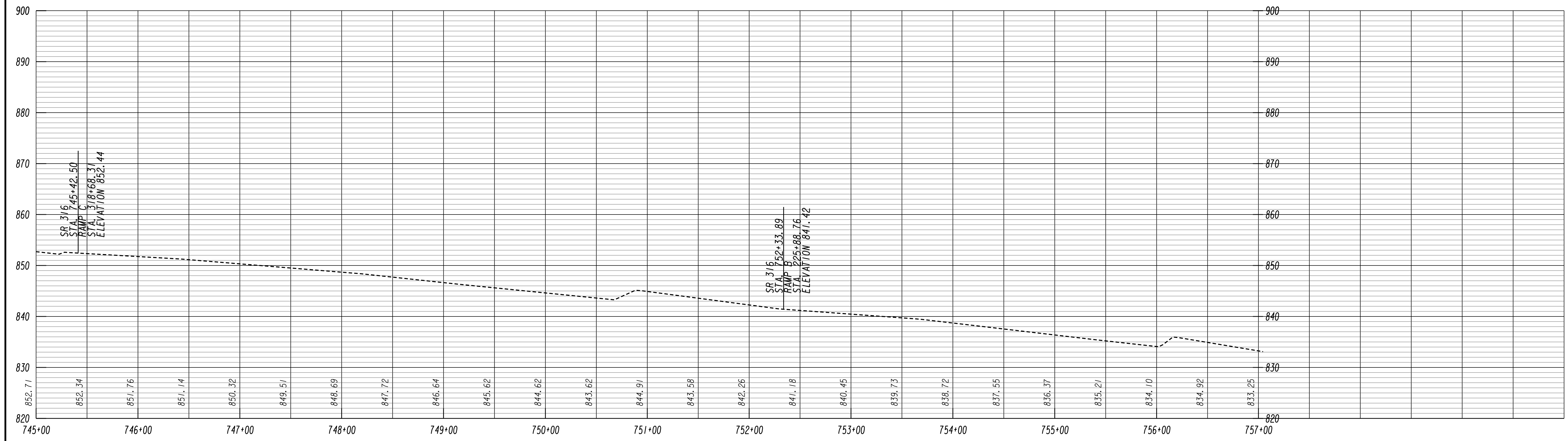
**GEORGIA**  
DEPARTMENT  
OF  
TRANSPORTATION

1" = 50' HORIZ  
1" = 10' VERT

REVISION DATES	

STATE OF GEORGIA  
DEPARTMENT OF TRANSPORTATION  
OFFICE: ROADWAY DESIGN  
**CROSSROAD PROFILE**  
S. R. 316

DRAWING No.  
**16-0008**



**GEORGIA**  
DEPARTMENT  
OF  
TRANSPORTATION

1" = 50' HORIZ  
1" = 10' VERT

REVISION DATES	

STATE OF GEORGIA  
DEPARTMENT OF TRANSPORTATION  
OFFICE: ROADWAY DESIGN

**CROSSROAD PROFILE**

S. R. 316

DRAWING No. **16-0009**