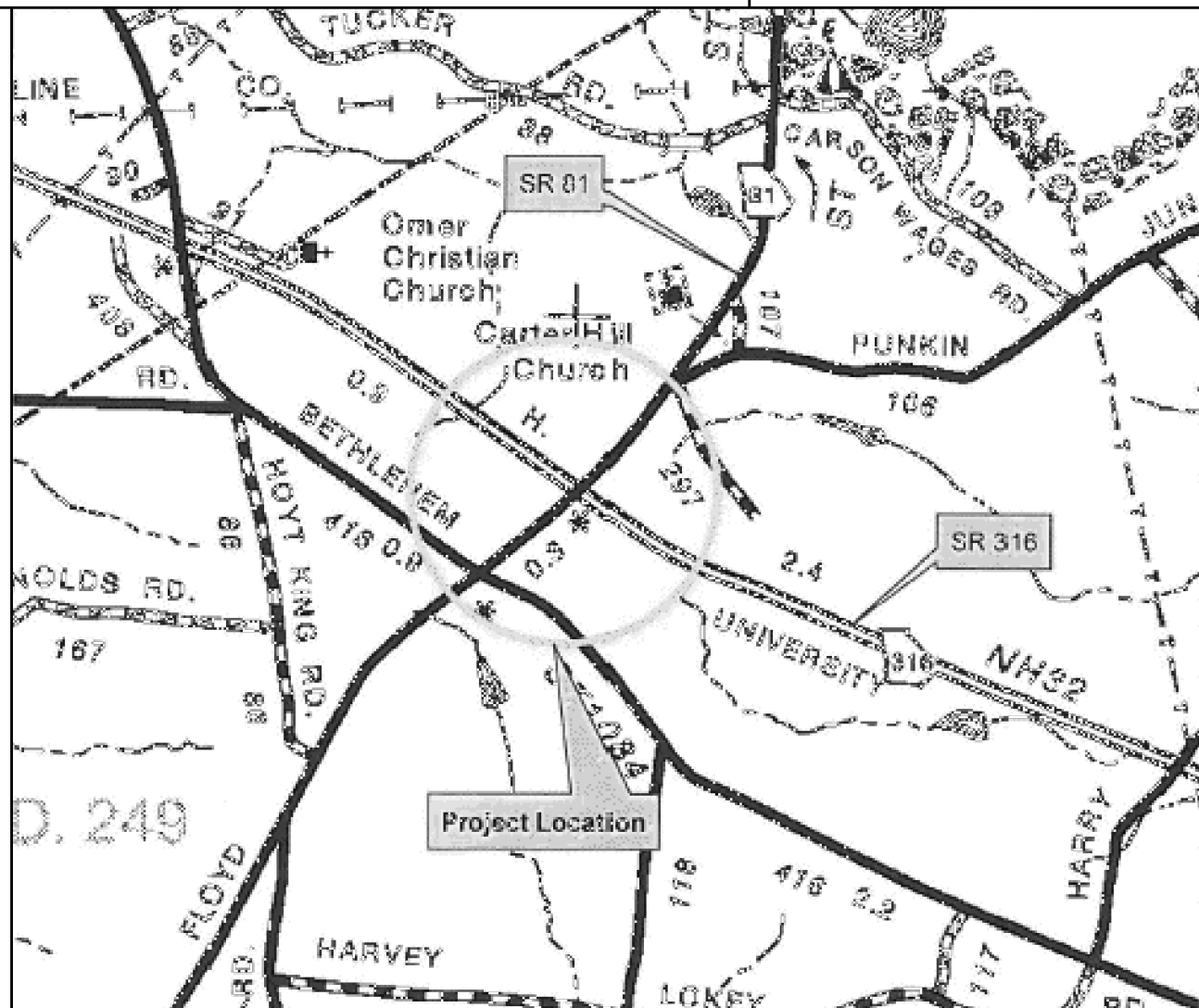


DEPARTMENT OF TRANSPORTATION STATE OF GEORGIA

PLAN AND PROFILE OF PROPOSED SR 316/US 29 AT SR 81 BARROW COUNTY

FEDERAL AID PROJECT
CSNHS-0008-00(429)



LOCATION SKETCH

DESIGN DATA:	SR 316	SR 81
TRAFFIC A.D.T.:	32600 (2020)	19100
TRAFFIC A.D.T.:	48350 (2040)	28300
TRAFFIC D.H.V.:	1835 ONE WAY	1135
DIRECTIONAL DIST:	57%	56%
% TRUCKS:	14.0%	4.5%
24 HR. TRUCKS %:	9.25%	5.0%
SPEED DESIGN:	65 MPH	45 MPH

LOCATION & DESIGN APPROVAL DATE:

FUNCTIONAL CLASS:
RURAL PRINCIPAL ARTERIAL (SR 316)
RURAL MAJOR COLLECTOR (SR 81)

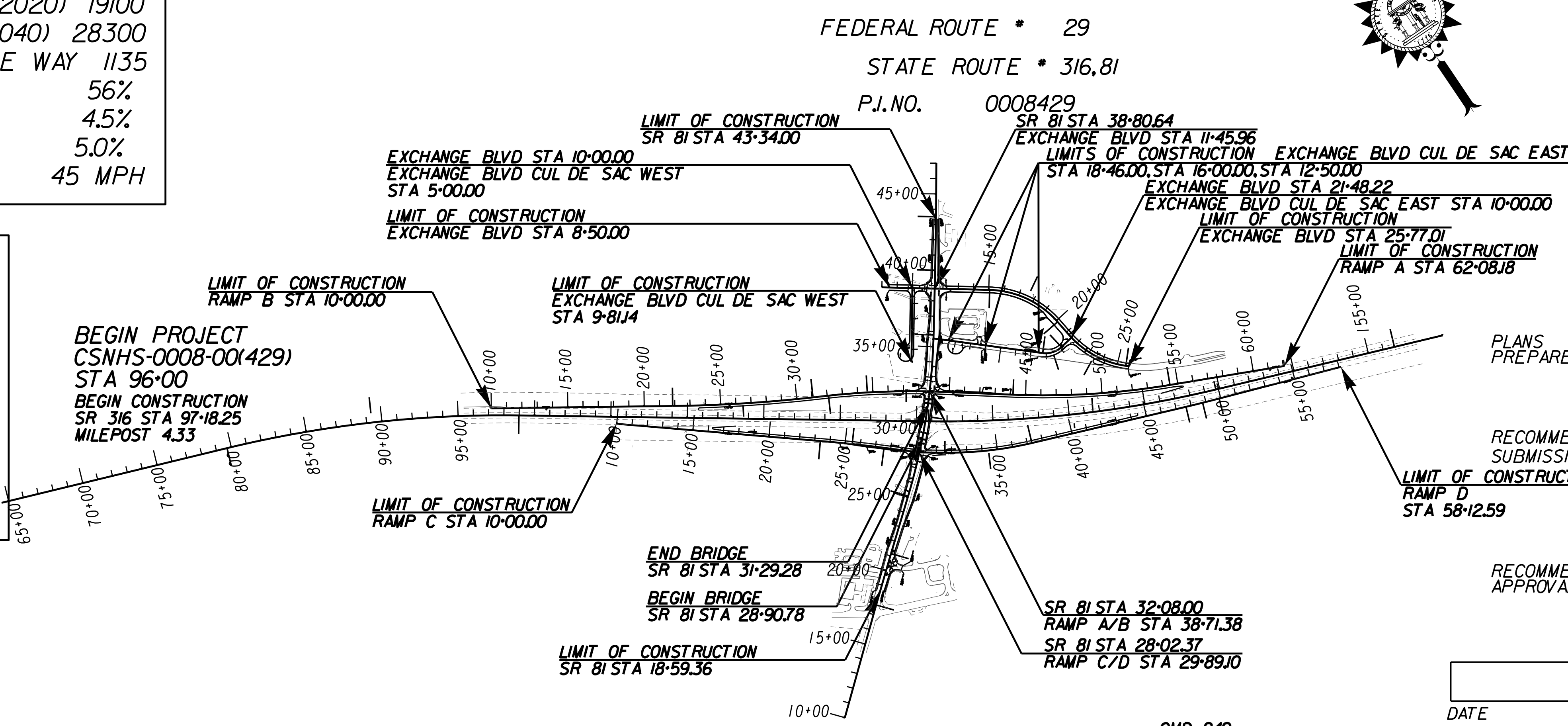
THIS PROJECT IS 100% IN BARROW COUNTY AND IS 100% IN CONG. DIST. NO. 10

PROJECT DESIGNATION: EXEMPT DESIGNED IN ENGLISH UNITS.

THIS PROJECT HAS BEEN PREPARED USING THE HORIZONTAL GEORGIA COORDINATE SYSTEM OF 1984 (NAD 1983/94 WEST ZONE, AND THE NORTH AMERICAN VERTICAL DATUM (NAVD) OF 1988.

MID-POINT COORDINATES
STA 30+10.03 S.R. 81
N 1435682.427
E 2421649.002

THE DATA TOGETHER WITH ALL OTHER INFORMATION SHOWN ON THESE PLANS OR IN ANYWAY INDICATED THEREBY, WHETHER BY DRAWINGS OR NOTES, OR IN ANY OTHER MANNER, ARE BASED UPON FIELD INVESTIGATIONS AND ARE BELIEVED TO BE INDICATIVE OF ACTUAL CONDITIONS. HOWEVER, THE SAME ARE SHOWN AS INFORMATION ONLY, ARE NOT GUARANTEED, AND DO NOT BIND THE DEPARTMENT OF TRANSPORTATION IN ANY WAY. THE ATTENTION OF BIDDER IS SPECIFICALLY DIRECTED TO SUBSECTIONS 102.04, 102.05, AND 104.03 OF THE SPECIFICATIONS.



NOTE: ALL REFERENCES IN THIS DOCUMENT, WHICH INCLUDES ALL PAPERS, WRITINGS, DOCUMENTS, DRAWINGS, OR PHOTOGRAPHS USED, OR TO BE USED IN CONNECTION WITH THIS DOCUMENT, TO "STATE HIGHWAY DEPARTMENT OF GEORGIA," "STATE HIGHWAY DEPARTMENT," "GEORGIA STATE HIGHWAY DEPARTMENT," "HIGHWAY DEPARTMENT," OR "DEPARTMENT" WHEN THE CONTEXT THEREOF MEANS THE STATE HIGHWAY DEPARTMENT OF GEORGIA, AND SHALL BE DEEMED TO MEAN THE DEPARTMENT OF TRANSPORTATION.

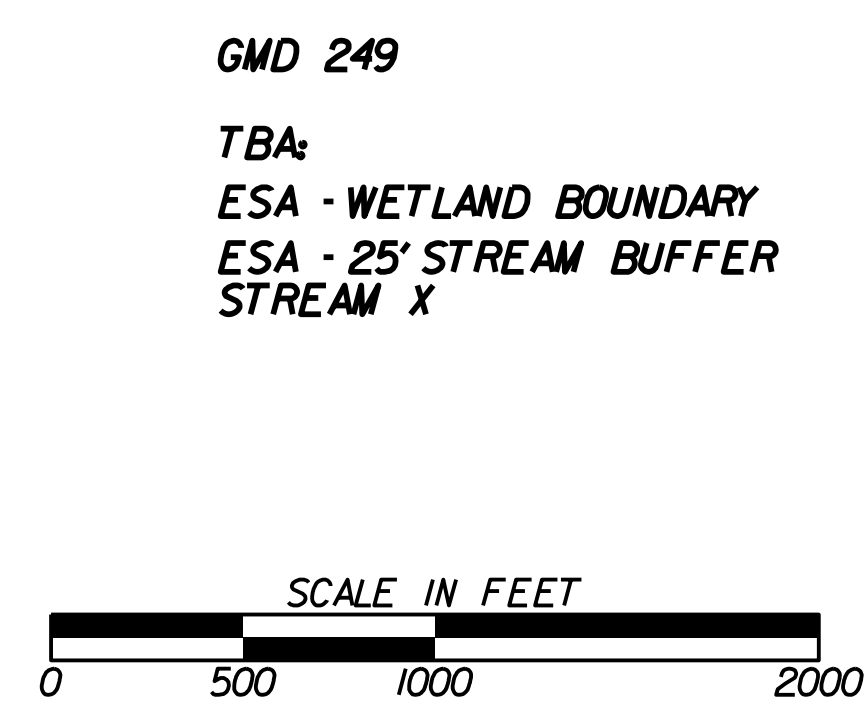
END PROJECT CSNHS-0008-00(429) STA 155+00
END CONSTRUCTION SR 81 STA 153+05.07 MILEPOST 5.39

PLANS PREPARED BY: TERESA LANNON
DESIGN ENGINEER

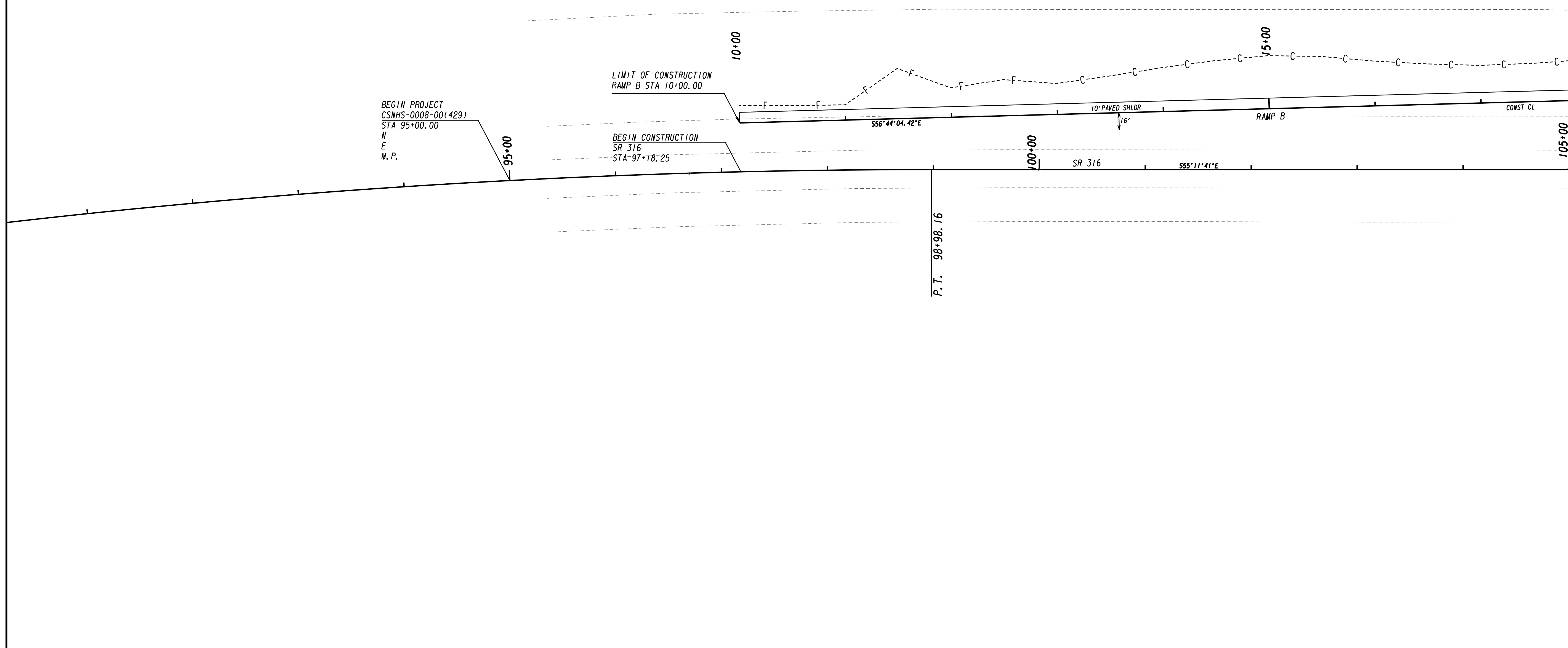
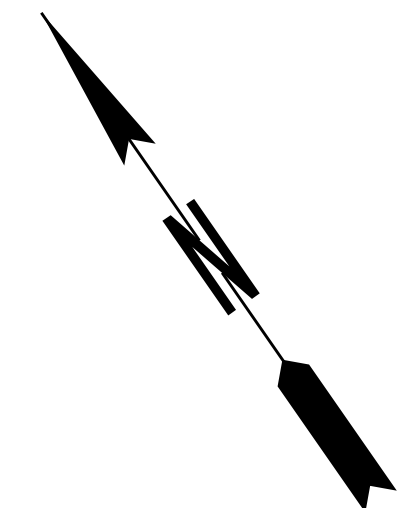
RECOMMENDED FOR SUBMISSION BY: JAN HILLIARD
DESIGN ENGINEER GROUP MANAGER

RECOMMENDED FOR APPROVAL BY: STATE ROADWAY DESIGN ENGINEER

LENGTH OF PROJECT	COUNTY No. 013
	Project No. CSNHS-0008-00(429)
	MILES
NET LENGTH OF ROADWAY	0.424
NET LENGTH OF BRIDGES	0.045
NET LENGTH OF PROJECT	0.469
NET LENGTH OF EXCEPTIONS	0.000
GROSS LENGTH OF PROJECT	0.469



DATE	CHIEF ENGINEER
PLANS COMPLETED	- -
REVISIONS	



MATCH LINE STA. 105+00 DRAWING No. 13-0002

PROPERTY AND EXISTING R/W LINE
 REQUIRED R/W LINE
 CONSTRUCTION LIMITS
 EASEMENT FOR CONSTR
 & MAINTENANCE OF SLOPES
 EASEMENT FOR CONSTR OF SLOPES
 EASEMENT FOR CONSTR OF DRIVES

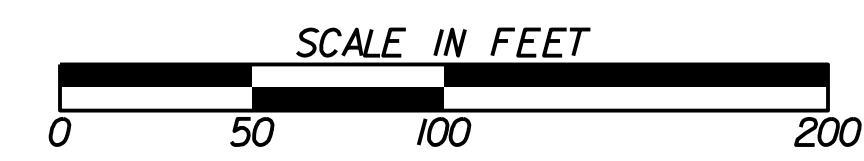
-----@-----

 -C-F-
 [Hatched Box]
 [Hatched Box]
 [Hatched Box]

BEGIN LIMIT OF ACCESS.....BLA
 END LIMIT OF ACCESS.....ELA
 LIMIT OF ACCESS
 REQ'D R/W & LIMIT OF ACCESS

---o---o---o---
 ---||---||

GEORGIA
 DEPARTMENT
 OF
 TRANSPORTATION

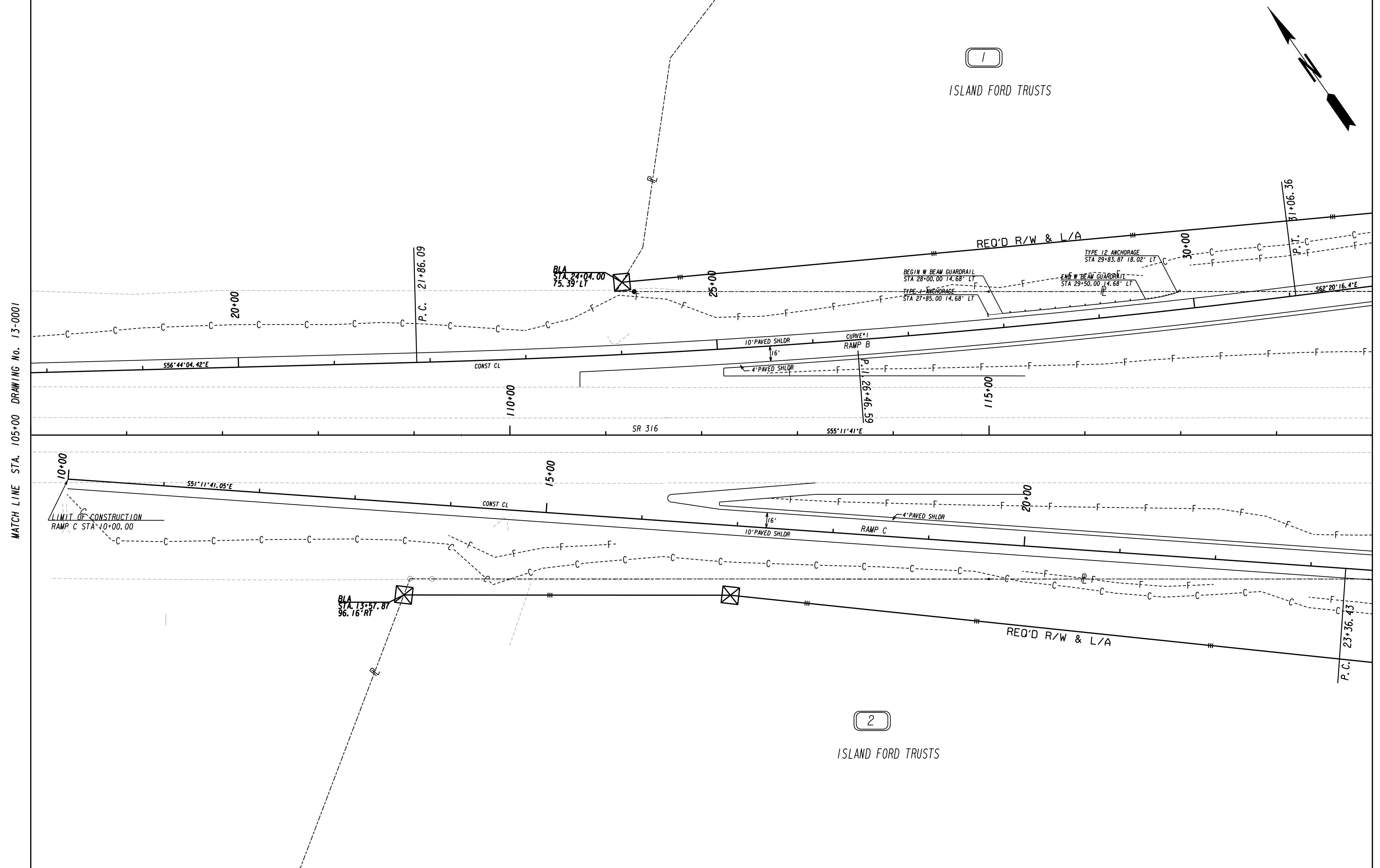


REVISION DATES		

STATE OF GEORGIA
 DEPARTMENT OF TRANSPORTATION
 OFFICE: ROADWAY DESIGN
MAINLINE PLAN

RAMPS B & C

DRAWING No.
13-0001



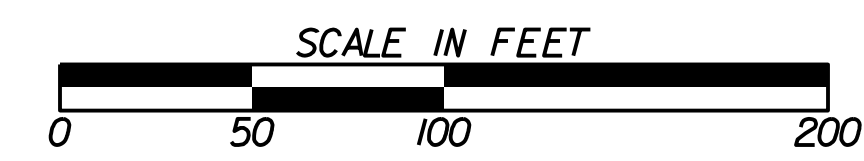
MATCH LINE STA. 105+00 DRAWING No. 13-0001

MATCH LINE STA. 119+00 DRAWING No. 13-0003

PROPERTY AND EXISTING R/W LINE
 REQUIRED R/W LINE
 CONSTRUCTION LIMITS
 EASEMENT FOR CONSTR
 & MAINTENANCE OF SLOPES
 EASEMENT FOR CONSTR OF SLOPES
 EASEMENT FOR CONSTR OF DRIVES

---@--- BEGIN LIMIT OF ACCESS.....BLA
 ---C---F--- END LIMIT OF ACCESS.....ELA
 ---@---@--- LIMIT OF ACCESS
 ---||---||--- REQ'D R/W & LIMIT OF ACCESS

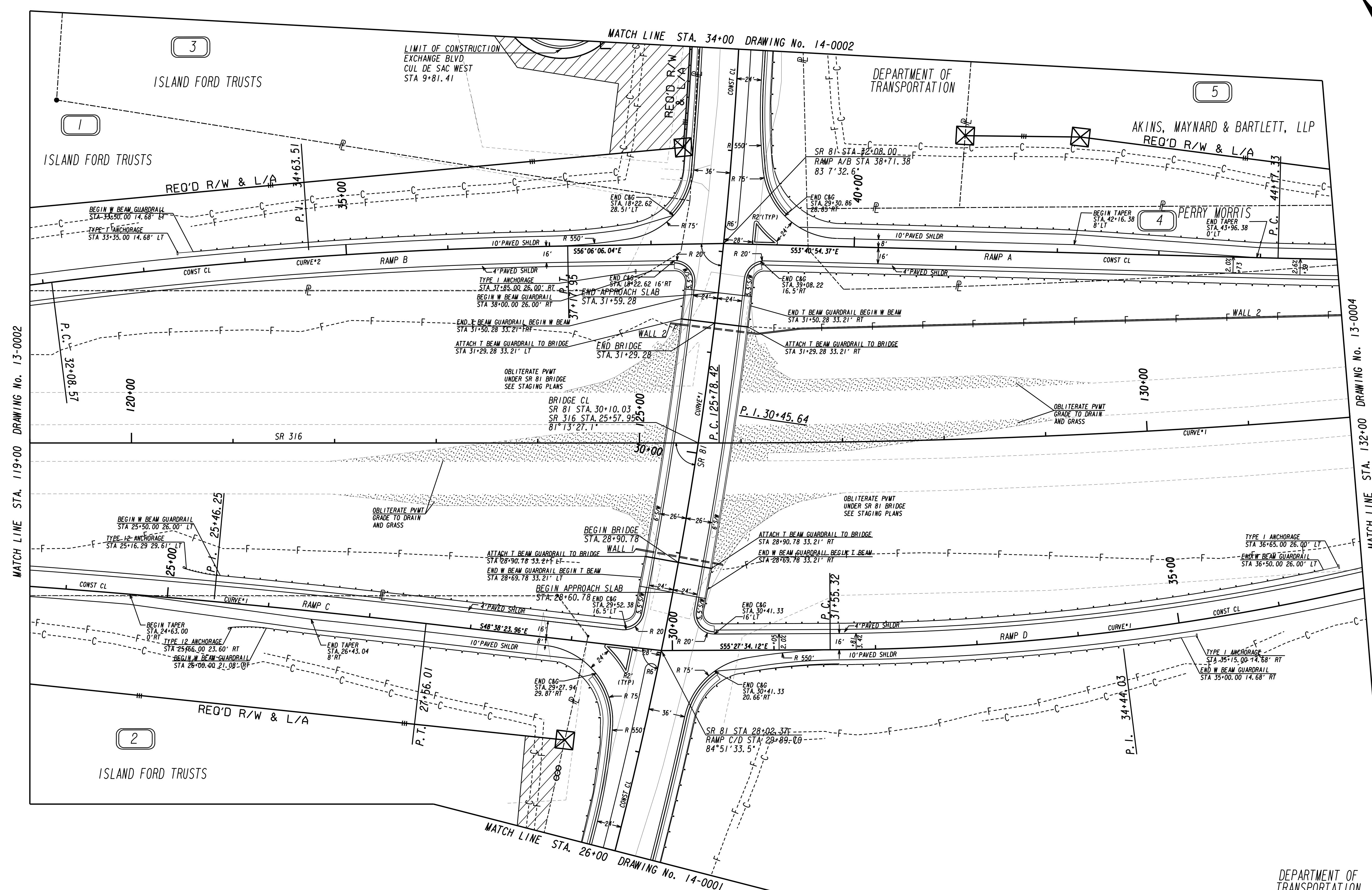
GEORGIA
 DEPARTMENT
 OF
 TRANSPORTATION



REVISION DATES	

STATE OF GEORGIA
 DEPARTMENT OF TRANSPORTATION
 OFFICE: ROADWAY DESIGN
MAINLINE PLAN
 RAMPS B & C

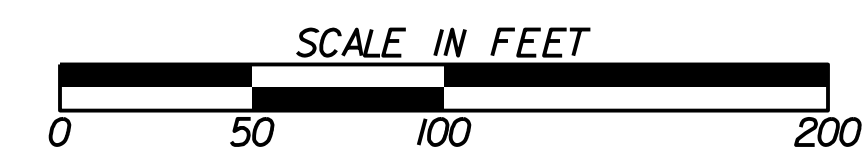
DRAWING No.
13-0002



PROPERTY AND EXISTING R/W LINE	---
REQUIRED R/W LINE	---
CONSTRUCTION LIMITS	---
EASEMENT FOR CONSTR & MAINTENANCE OF SLOPES	▨
EASEMENT FOR CONSTR OF SLOPES	▩
EASEMENT FOR CONSTR OF DRIVES	▧

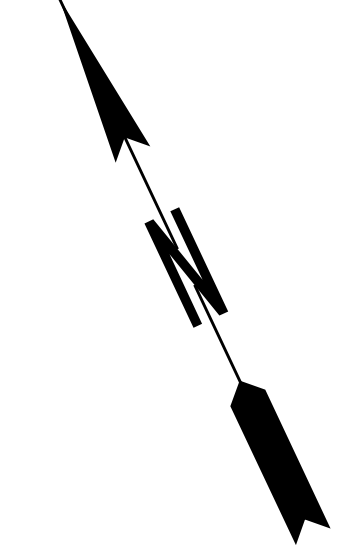
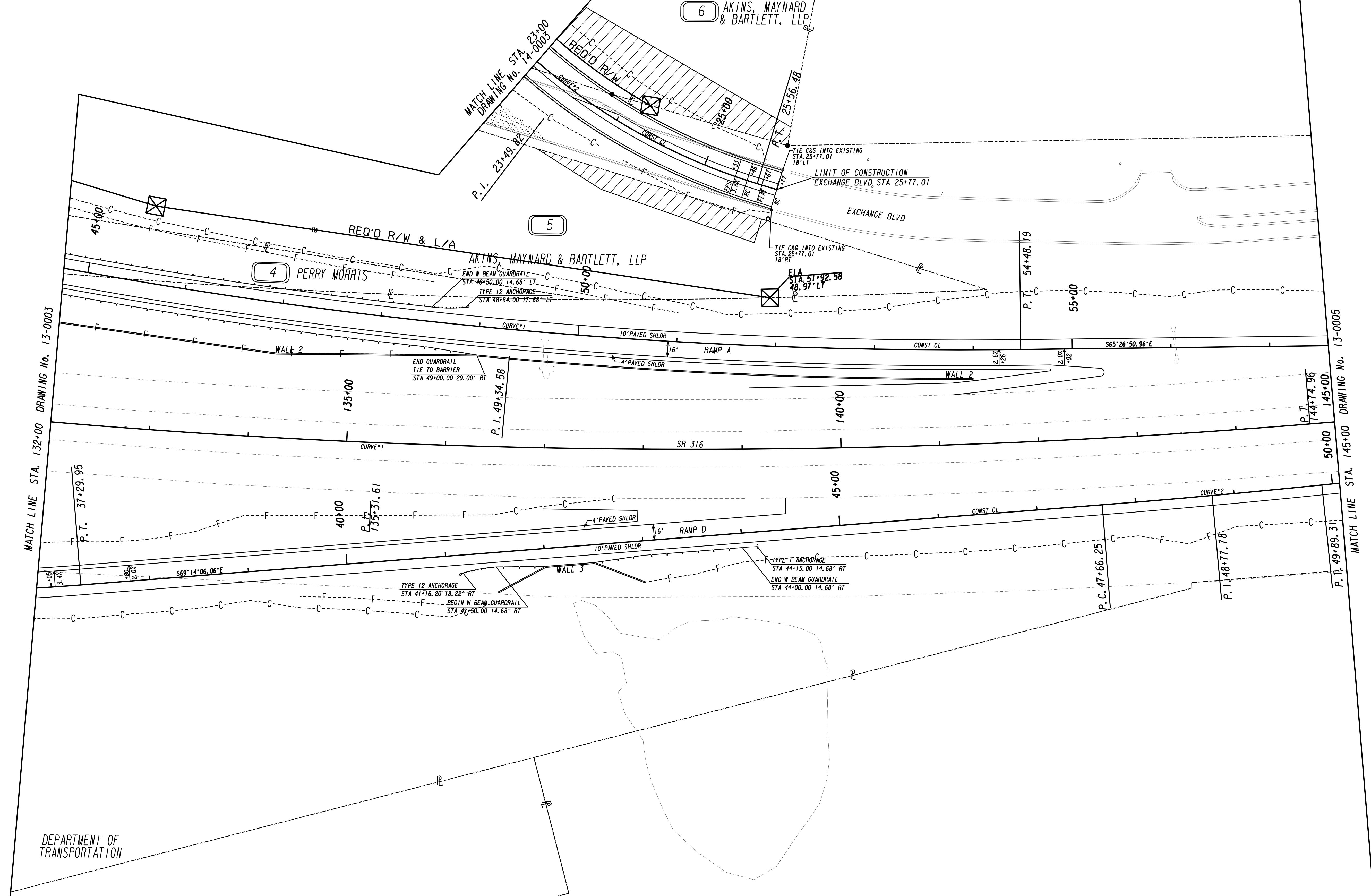
BEGIN LIMIT OF ACCESS.....BLA	---
END LIMIT OF ACCESS.....ELA	---
LIMIT OF ACCESS	---
REQ'D R/W & LIMIT OF ACCESS	---

GEORGIA
DEPARTMENT
OF
TRANSPORTATION



REVISION DATES	

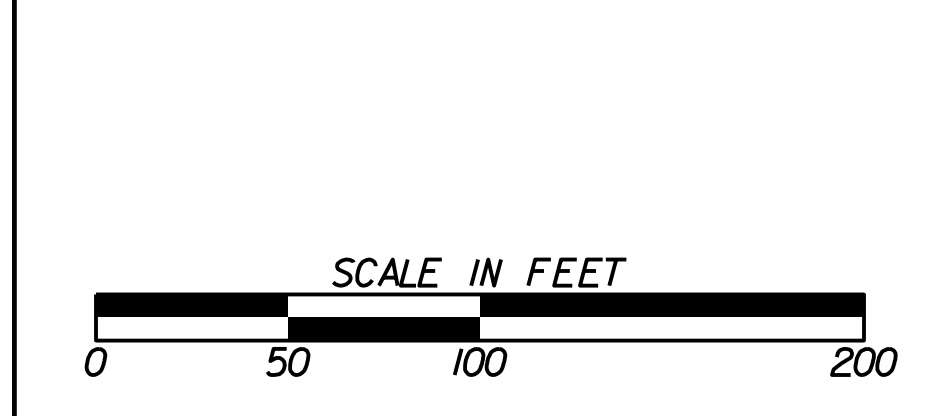
STATE OF GEORGIA
DEPARTMENT OF TRANSPORTATION
OFFICE: ROADWAY DESIGN
MAINLINE PLAN
SR 81
DRAWING No. 13-0003



PROPERTY AND EXISTING R/W LINE	---
REQUIRED R/W LINE	---
CONSTRUCTION LIMITS	---
EASEMENT FOR CONSTR & MAINTENANCE OF SLOPES	---
EASEMENT FOR CONSTR OF SLOPES	---
EASEMENT FOR CONSTR OF DRIVES	---

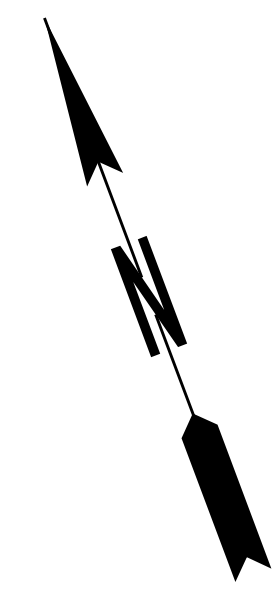
BEGIN LIMIT OF ACCESS.....BLA	---
END LIMIT OF ACCESS.....ELA	---
LIMIT OF ACCESS	---
REQ'D R/W & LIMIT OF ACCESS	---

GEORGIA
 DEPARTMENT
 OF
 TRANSPORTATION

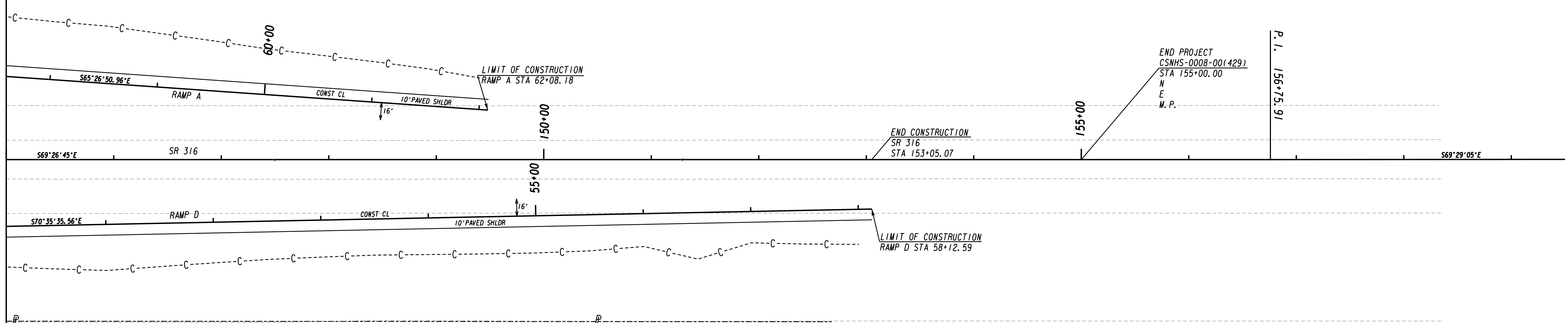


REVISION	DATE	DESCRIPTION

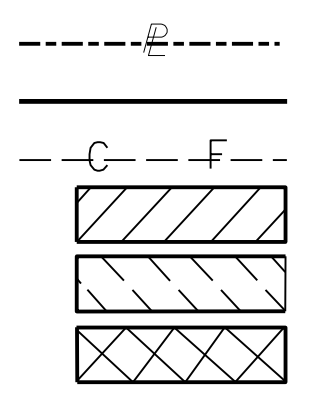
STATE OF GEORGIA
 DEPARTMENT OF TRANSPORTATION
 OFFICE: ROADWAY DESIGN
MAINLINE PLAN
 RAMPS A & D
 DRAWING No. 13-0004



MATCH LINE STA. 145+00 DRAWING No. 13-0004

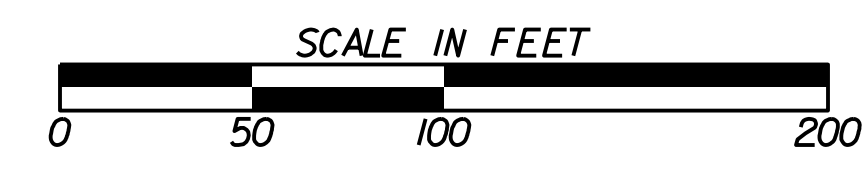


PROPERTY AND EXISTING R/W LINE
 REQUIRED R/W LINE
 CONSTRUCTION LIMITS
 EASEMENT FOR CONSTR
 & MAINTENANCE OF SLOPES
 EASEMENT FOR CONSTR OF SLOPES
 EASEMENT FOR CONSTR OF DRIVES



BEGIN LIMIT OF ACCESS.....BLA
 END LIMIT OF ACCESS.....ELA
 LIMIT OF ACCESS
 REQ'D R/W & LIMIT OF ACCESS

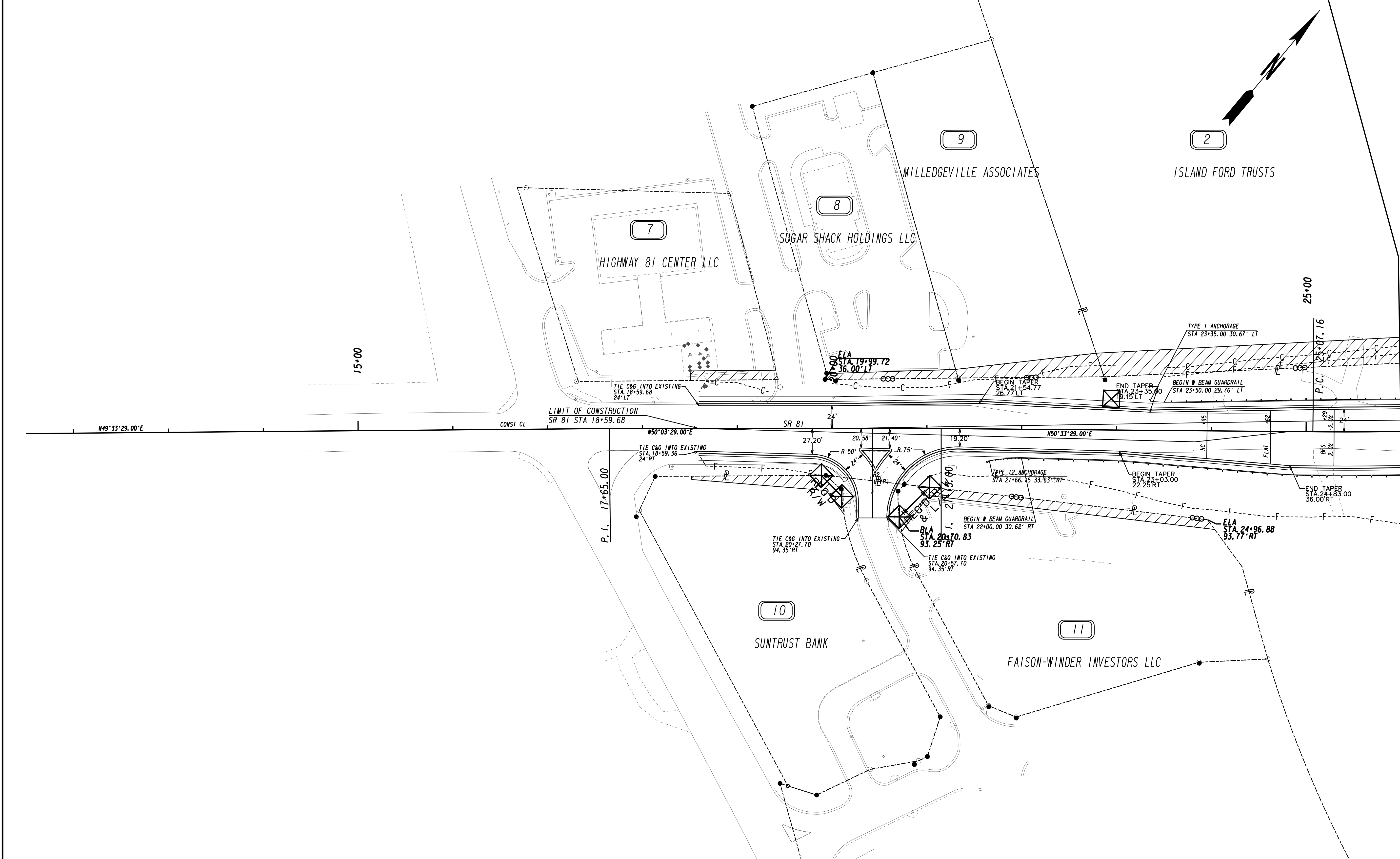
GEORGIA
 DEPARTMENT
 OF
 TRANSPORTATION



REVISION DATES	

STATE OF GEORGIA
 DEPARTMENT OF TRANSPORTATION
 OFFICE: ROADWAY DESIGN
MAINLINE PLAN
 RAMPS A & D

DRAWING No.
13-0005

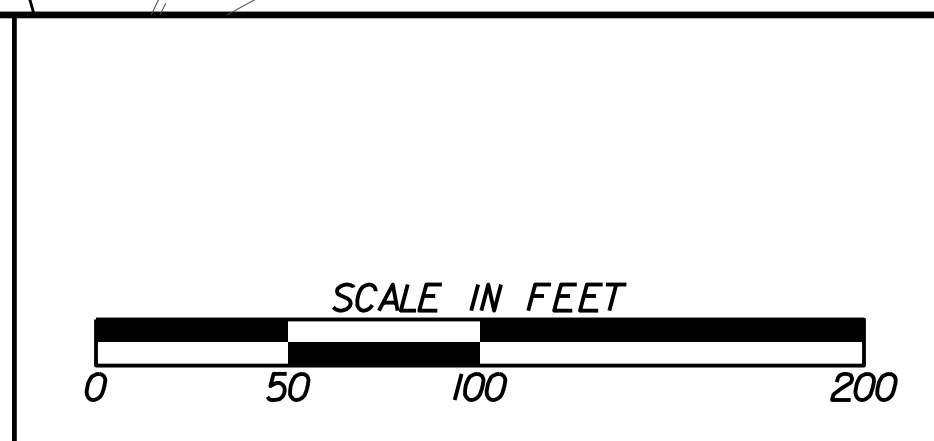


DRAWING No. 13-0003
MATCH LINE STA. 26+00

<p>PROPERTY AND EXISTING R/W LINE REQUIRED R/W LINE CONSTRUCTION LIMITS EASEMENT FOR CONSTR & MAINTENANCE OF SLOPES EASEMENT FOR CONSTR OF SLOPES EASEMENT FOR CONSTR OF DRIVES</p>	<p>---@--- ---C---F--- [Hatched Box] [Hatched Box] [Hatched Box]</p>
---	--

<p>BEGIN LIMIT OF ACCESS.....BLA END LIMIT OF ACCESS.....ELA LIMIT OF ACCESS REQ'D R/W & LIMIT OF ACCESS</p>	<p>---o---o--- --- --- ---</p>
--	--------------------------------------

GEORGIA
DEPARTMENT
OF
TRANSPORTATION

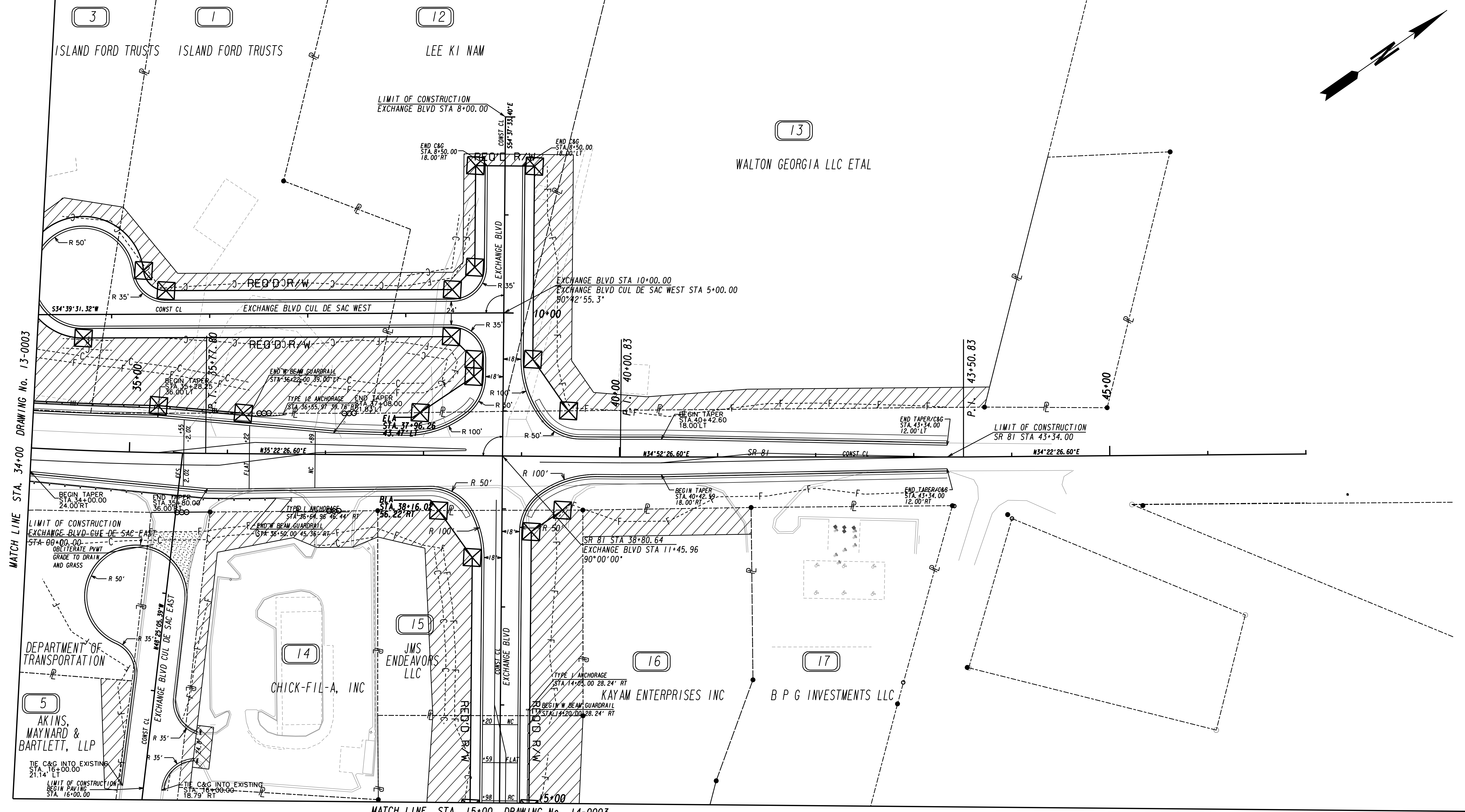


REVISION DATES	

STATE OF GEORGIA
DEPARTMENT OF TRANSPORTATION
OFFICE: ROADWAY DESIGN
CROSSROAD PLAN

SR 81

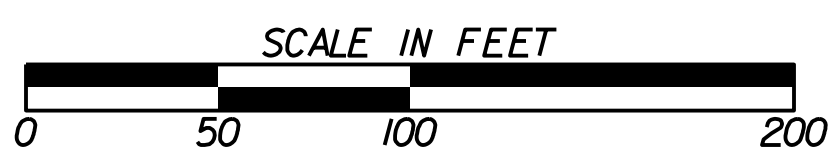
DRAWING No.
14-0001



PROPERTY AND EXISTING R/W LINE
 REQUIRED R/W LINE
 CONSTRUCTION LIMITS
 EASEMENT FOR CONSTR
 & MAINTENANCE OF SLOPES
 EASEMENT FOR CONSTR OF SLOPES
 EASEMENT FOR CONSTR OF DRIVES

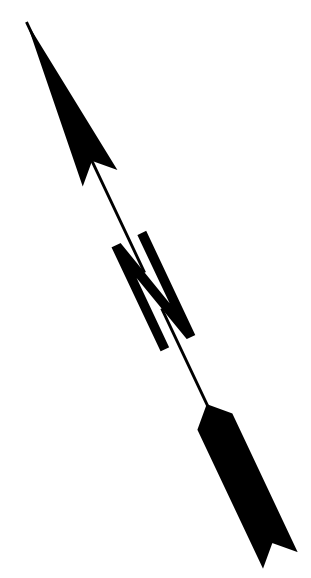
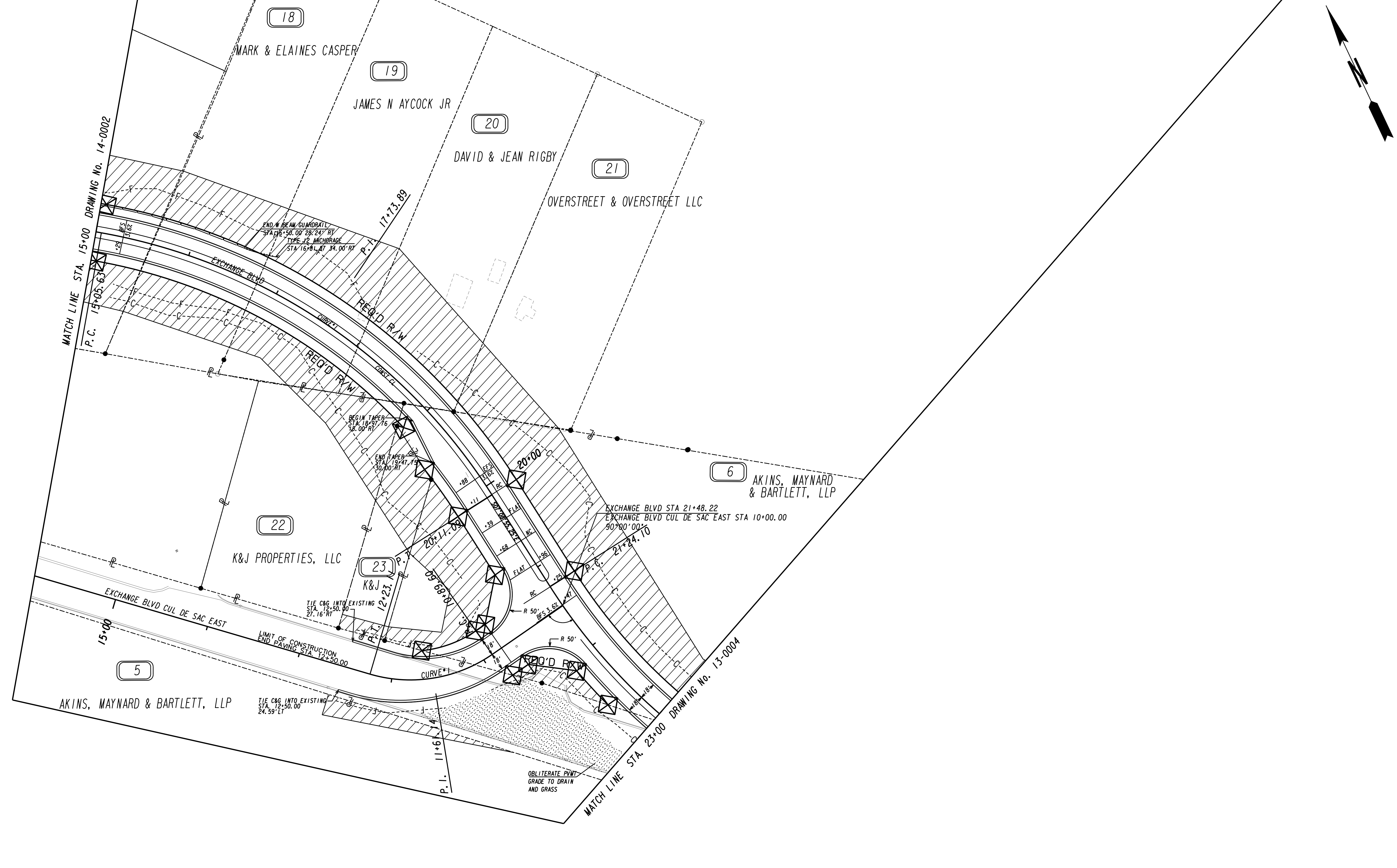
---@--- BEGIN LIMIT OF ACCESS.....BLA
 ---C--- F--- END LIMIT OF ACCESS.....ELA
 ---@---@--- LIMIT OF ACCESS
 ---||---||--- REQ'D R/W & LIMIT OF ACCESS

GEORGIA
 DEPARTMENT
 OF
 TRANSPORTATION



REVISION DATES	

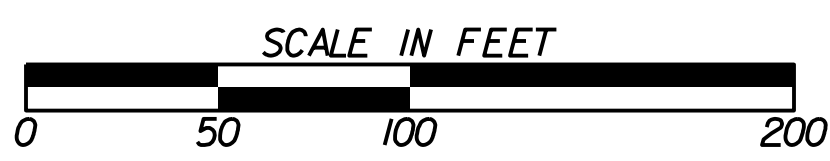
STATE OF GEORGIA
 DEPARTMENT OF TRANSPORTATION
 OFFICE: ROADWAY DESIGN
CROSSROAD PLAN
 SR 81
 DRAWING No. 14-0002



PROPERTY AND EXISTING R/W LINE
 REQUIRED R/W LINE
 CONSTRUCTION LIMITS
 EASEMENT FOR CONSTR
 & MAINTENANCE OF SLOPES
 EASEMENT FOR CONSTR OF SLOPES
 EASEMENT FOR CONSTR OF DRIVES

---@--- BEGIN LIMIT OF ACCESS.....BLA
 --- END LIMIT OF ACCESS.....ELA
 --- LIMIT OF ACCESS
 --- REQ'D R/W & LIMIT OF ACCESS

GEORGIA
 DEPARTMENT
 OF
 TRANSPORTATION



REVISION DATES	

STATE OF GEORGIA
 DEPARTMENT OF TRANSPORTATION
 OFFICE: ROADWAY DESIGN
CROSSROAD PLAN
 EXCHANGE BLVD
 DRAWING No. 14-0003